



Instructions for

Saber Boom Mower connection JD 6000M Series



Complete Boom mower.
Shown disconnected.



Take out 6 bolts in stow plate
and slide to far right, this is
the working position for stow.



Lift boom Swivel with over head
hoist and align with pin.



Thrust Washer goes under
bottom of swivel.
Part # 06520250 included.



Attach all lines so that controls
can be used to help lift and align
boom arm with swivel pin.



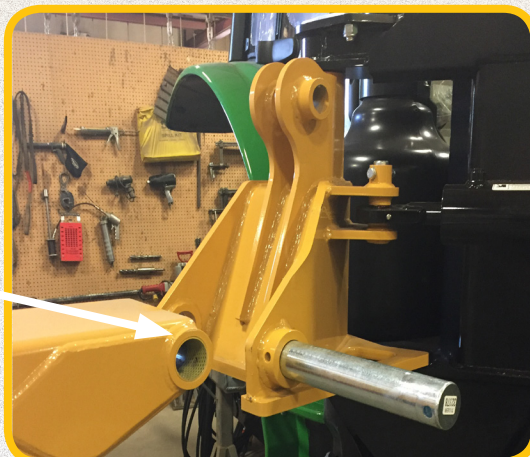
Connect lines to matching
labeled male and female ends.

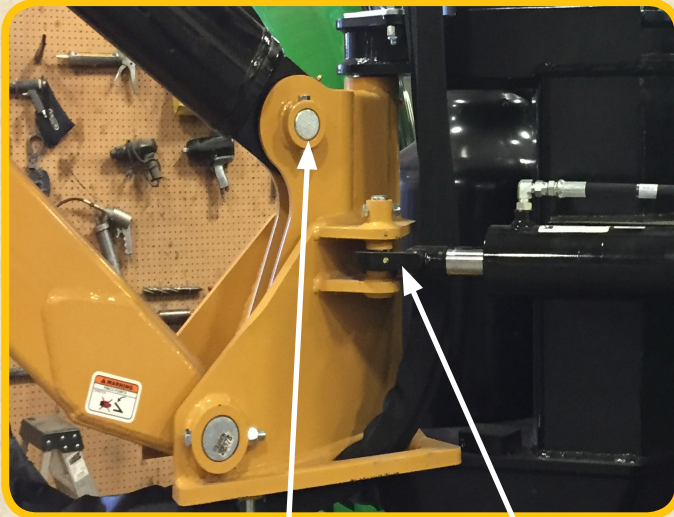


Tiger Corporation
3301 N Louise Ave.
Sioux Falls, SD 57107
800-843-6849

Connect end of primary boom arm to
swivel with horizontal pin.

WWW.TIGERMOWERS.COM

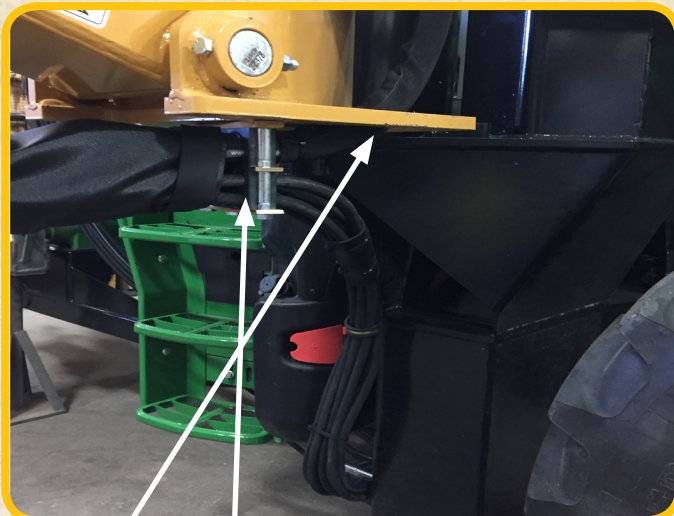




Connect boom arm cylinder to top tab on swivel. Connect swing cylinder with vertical pin located on right side of swivel.



Attach 1" hose to clamp under swivel on top bracket. White line marks are 40" from end of 1" line to hose clamp. 1/4" lines go on bottom bracket.



Run 1" lines up through hole in outside of swivel. Run 1/4" lines through bottom clamp.



Connect 1" hoses. Wrap hoses in teflon wrap. Wrap is located in the cab of tractor.



Connection complete - front side view.



Connection complete - back side view. **Approx. 4 hrs shop time to complete assembly.**