

M2268995

Parts Manual for  
**WGC No: 1039993T**  
**RBM60 ROTARY HEAD**

Print date: 25/10/2021

Applicable to Works Order No: 1117217

For Serial No: M2268995

## PARTS ORDERING GUIDE

The following instructions are offered to help eliminate needless delay and error in processing purchase orders for the equipment in this manual.

1. The Parts Section is prepared in logical sequence and grouping of parts that belong to the basic machine featured in this manual. Part Numbers and Descriptions are given to help locate the parts and quantities required.
2. The Purchase Order must indicate the **Name and Address** of the person or organization ordering the parts, **who should be charged**, and if possible, the **serial number of the machine** for which the parts are being ordered.
3. The purchase order must clearly list the **quantity of each part**, the complete and correct **part number**, and the basic **name of the part**.
4. The manufacturer reserves the right to substitute parts where applicable.
5. Some parts may be unlisted items which are special production items not normally stocked and are subject to special handling. Request a quotation for such parts before sending a purchase order.
6. The manufacturer reserves the right to change prices without prior notice.

NOTE: When ordering replacement decals, refer to the part numbers and descriptions listed in the safety section in the front of this manual.



For maximum safety and to guarantee optimum product reliability, always use genuine **Tiger** replacement parts. The use of inferior replacement parts may cause premature or catastrophic failure which could result in serious injury or death.

Direct any questions regarding parts to:

**Tiger Corporation**  
3301 N. Louise Ave.  
Sioux Falls, SD 57107  
**1-800-843-6849**  
**1-605-336-7900**

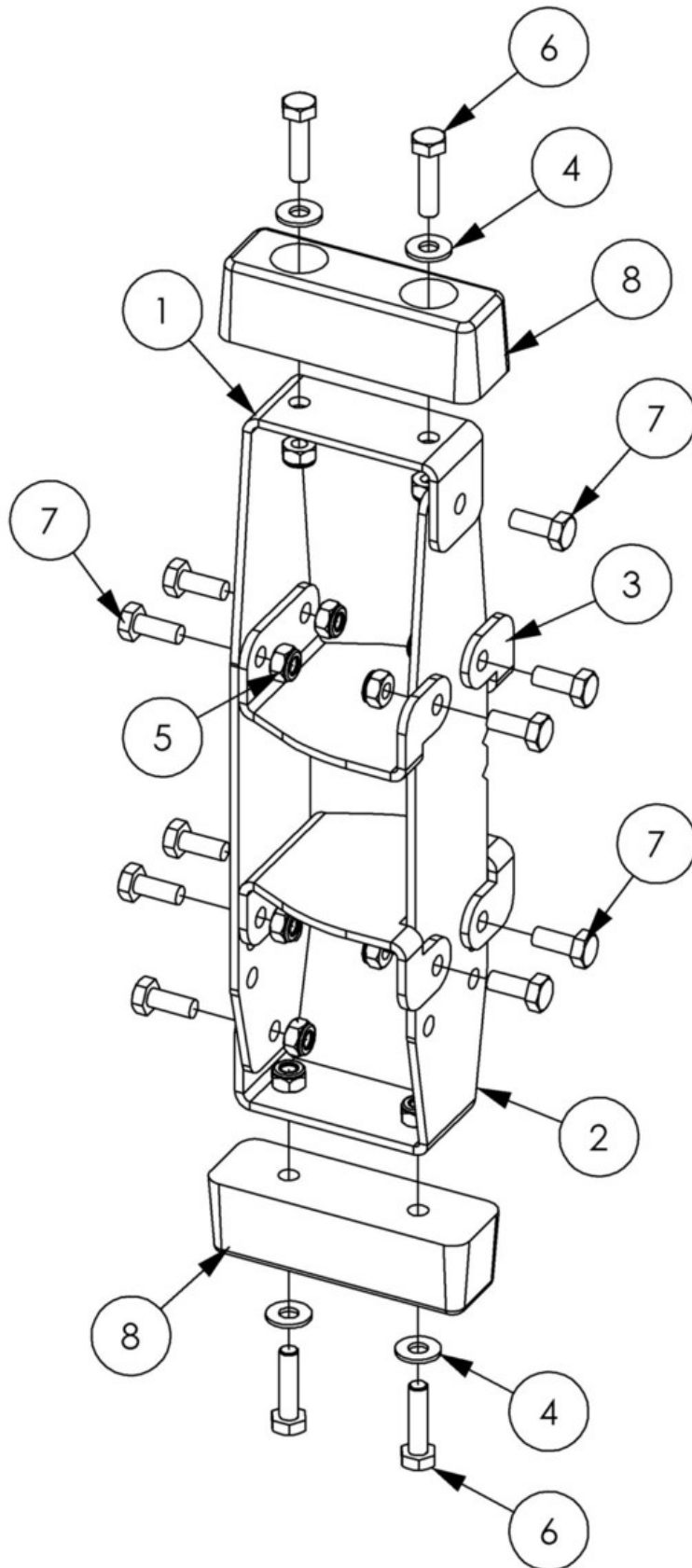


**CONTENTS**

Page No	Schedule No	Schedule Description
1	1039720	STOP MODULE
3	1039729	BEARING UNIT MOD
5	02960553BL	SPINDLE ASSY
7	1039735	CASING MODULE
9	1039736	BRACKET MODULE
11	1039740	HYD MODULE
13	1039769	DECAL
15	1039770	BLADE BAR ASSY
17	02782300	BLADE BAR ASSY
19	1039771	MOTOR MODULE
21	8301334	MOTOR

\* optional component

1039720 - STOP MODULE



## 1039720 - STOP MODULE

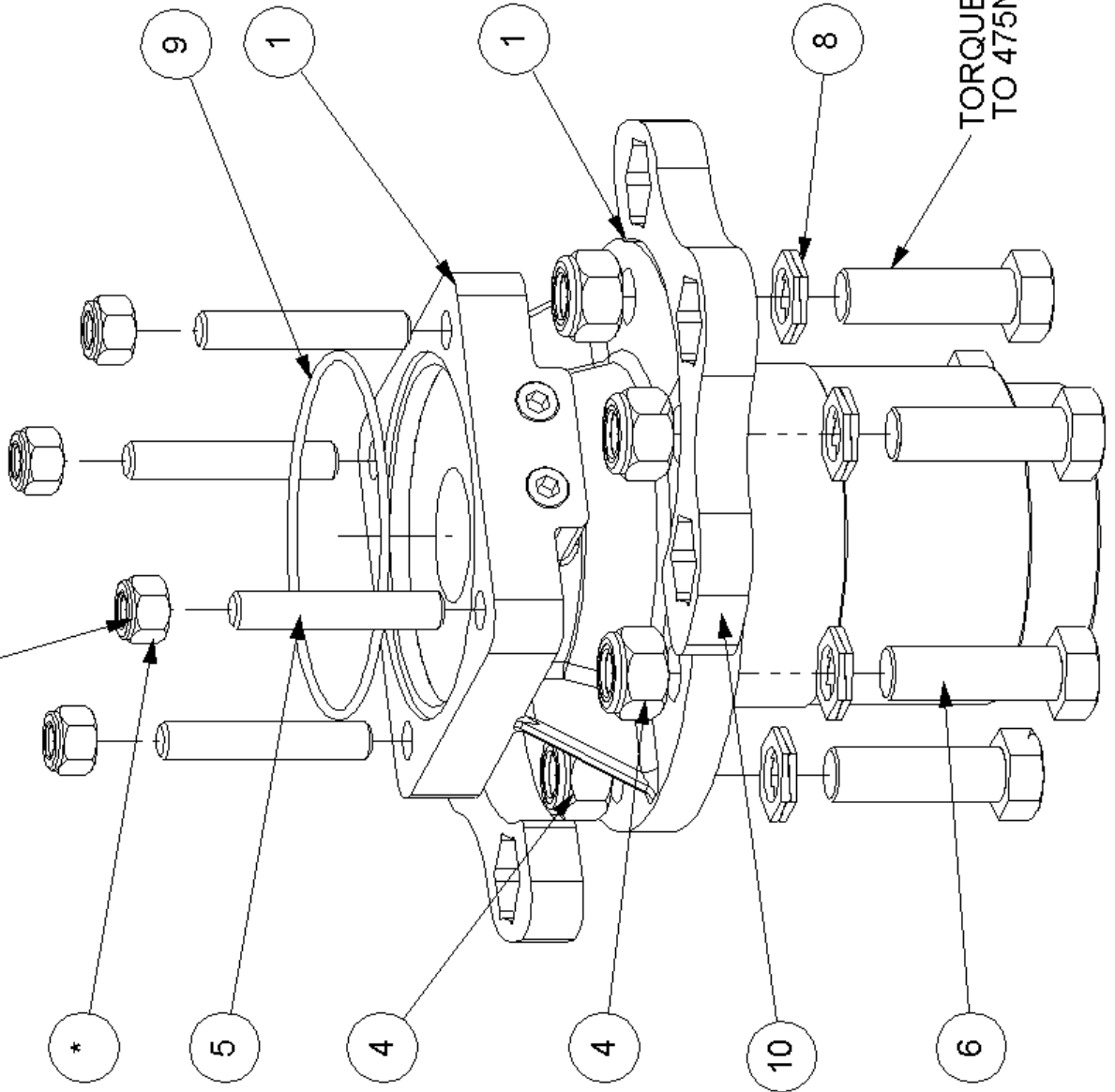
Ref	Part No	Description	Qty
1	22425.01	STOP PRESSING	1
2	22425.02	PRESSING	1
3	22426.01	STOP MTG PRESSING	2
4	9100105	WASHER	4
5	9163005	NUT	14
6	9213085	BOLT	4
7	9313055	SCREW	10
8	T7879	BUFFER	2

1039729 H - BEARING UNIT MOD

NOTE  
BEARING HOUSING IS PRE-FILLED  
WITH LUBRICANT BY SUPPLIER.

TORQUE M14 NYLOCK NUTS  
TO 75Nm(70lbf-ft)

TORQUE M20 BOLTS  
TO 475Nm(350 lbf-ft)

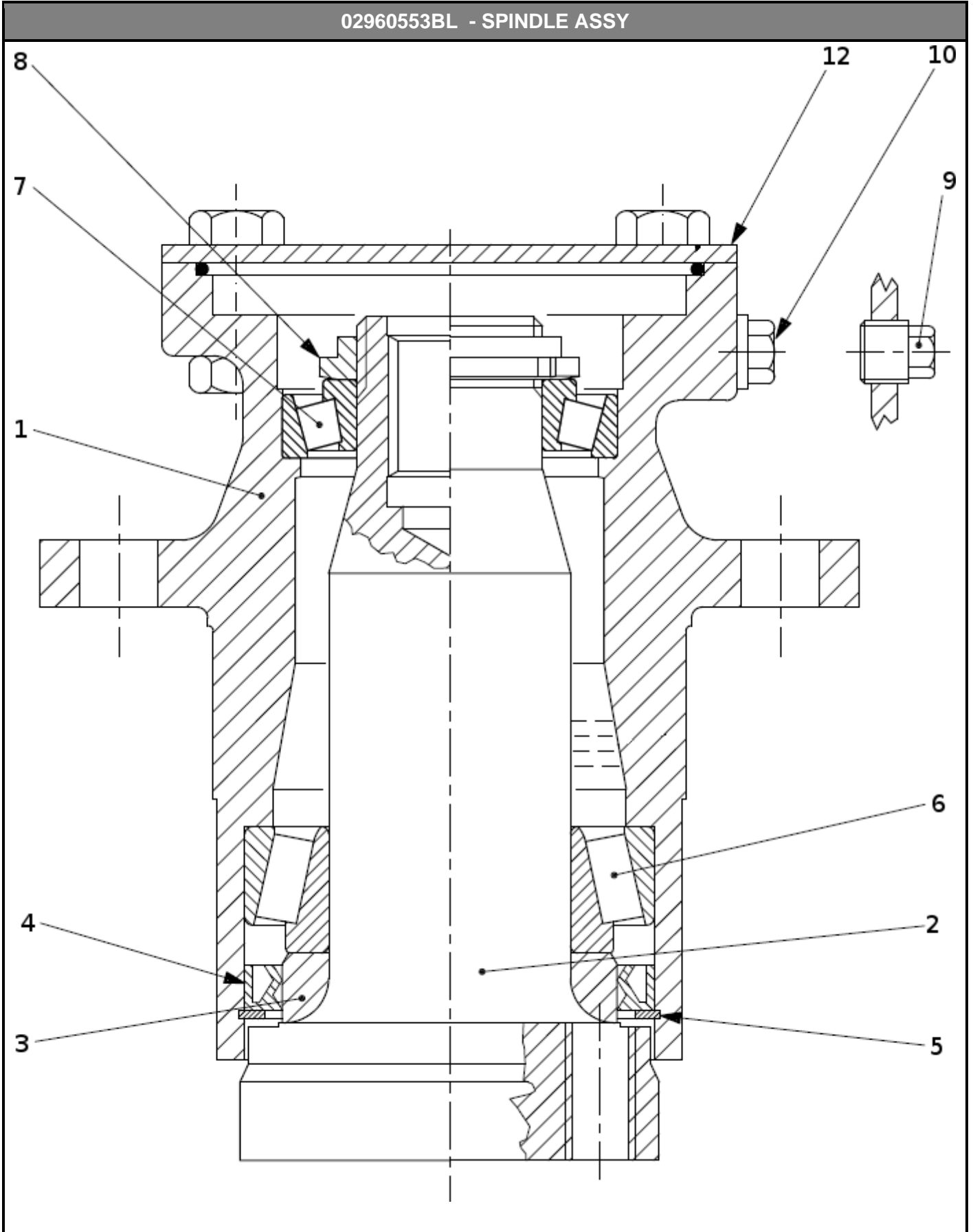


## 1039729 H - BEARING UNIT MOD

Ref	Part No	Description	Qty
1	02960553BL	SPINDLE ASSY	1
2	4000355	NUT	8
4	9100033	NUT	6
5	23016.03	STUD	4
6	9200071	BOLT	6
8	9100508	WASHER	6
9	8600329	"O" RING	1
10	23378.02	PLATE	2



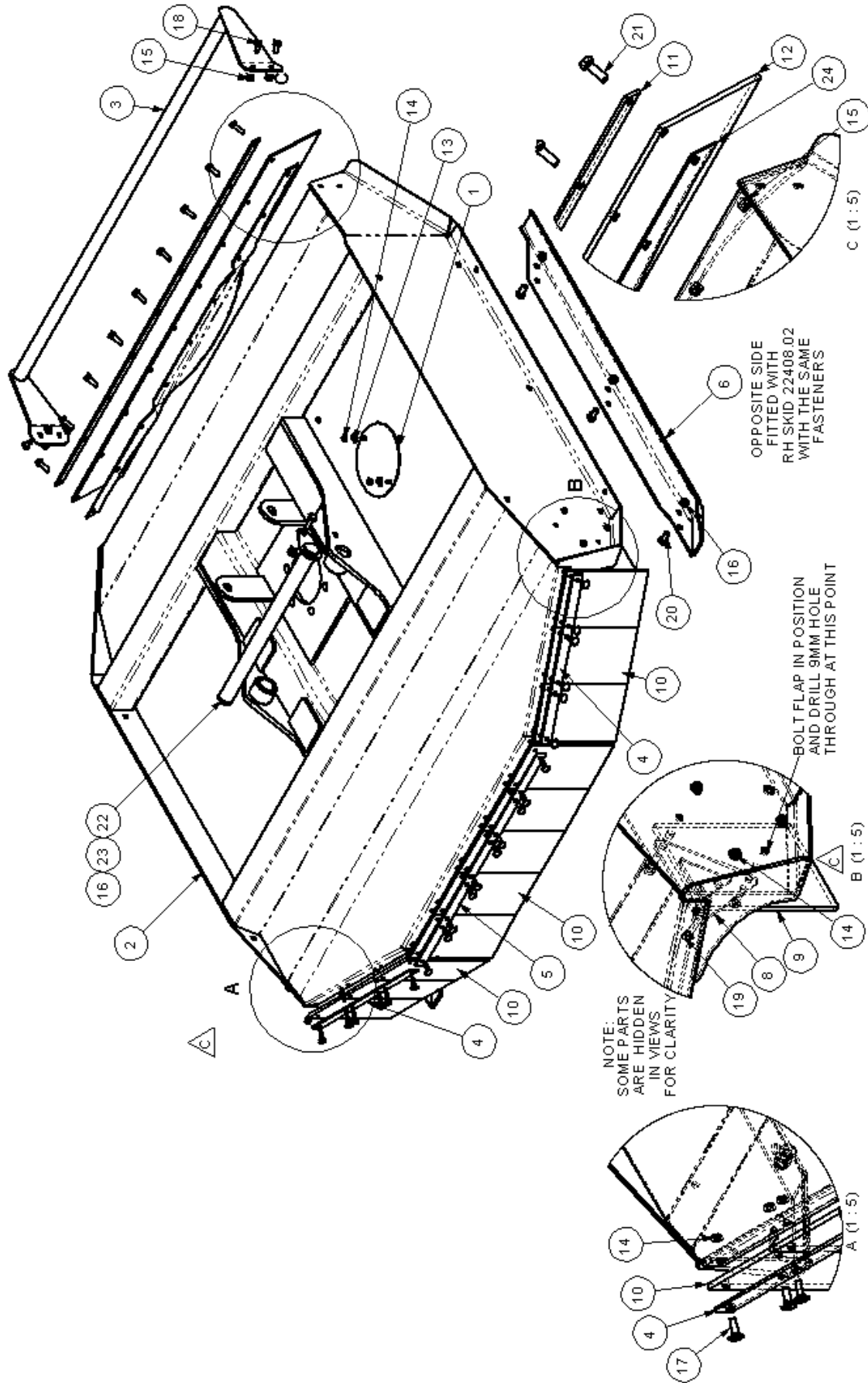
02960553BL - SPINDLE ASSY



## 02960553BL - SPINDLE ASSY

Ref	Part No	Description	Qty
1	00999612	GREASE	1
1	02963815	SPINDLE HOUSING	1
2	02960561	SPLINED SPINDLE	1
3	02960558	BEARING RING	1
4	02960559	SEAL	1
5	00754627	SNAP RING	1
6	02960557	BEARING (BOTTOM)	1
7	00769938	ROLLER BEARING	1
8	02962030	NUT	1
9	02959018	GREASER	1
10	00565000	PLUG 1/8 NPT	1
11	02976756	RETAINING RING	1
12	02963060	SPINDLE COVER	1

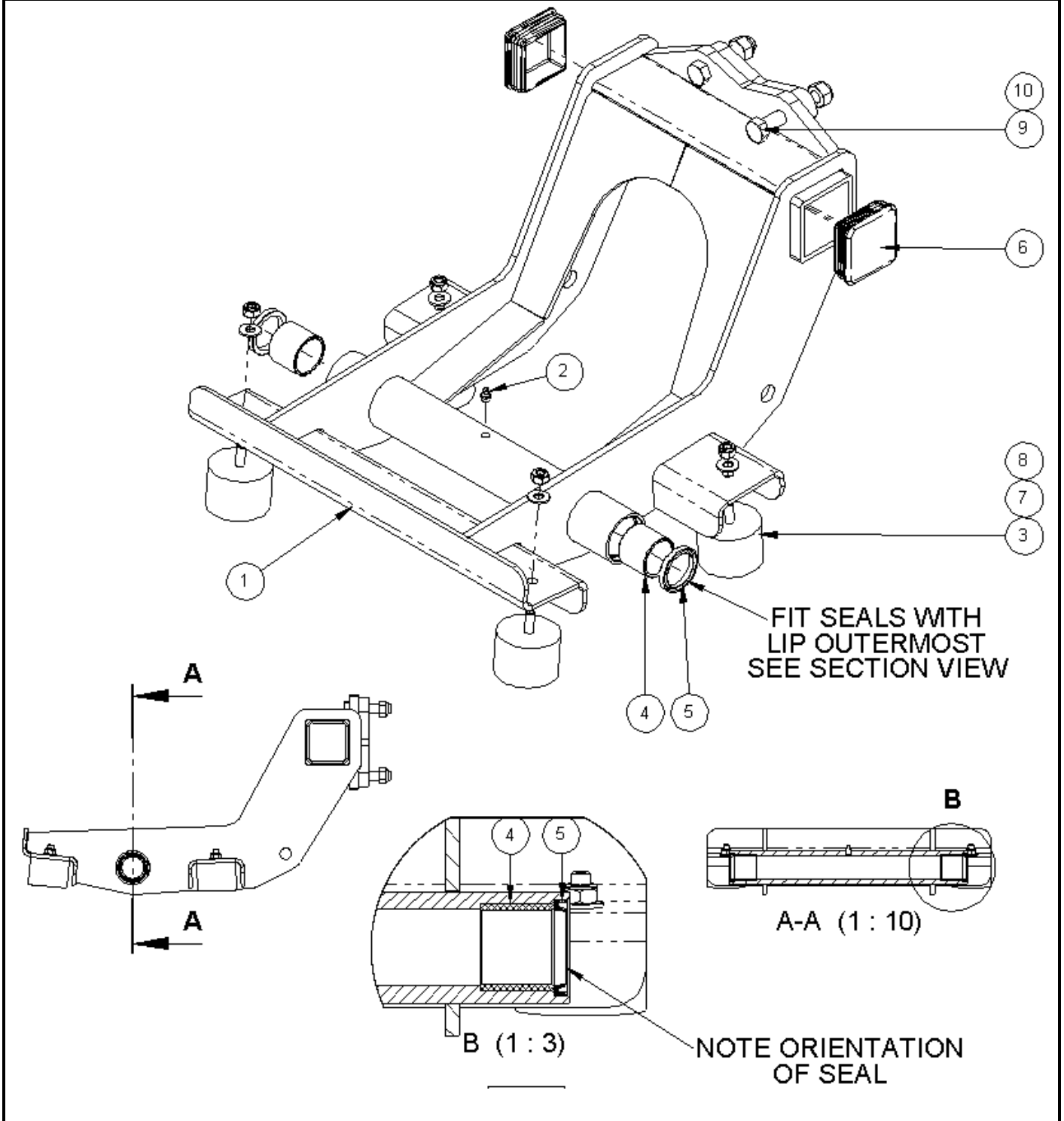
1039735 C - CASING MODULE



## 1039735 C - CASING MODULE

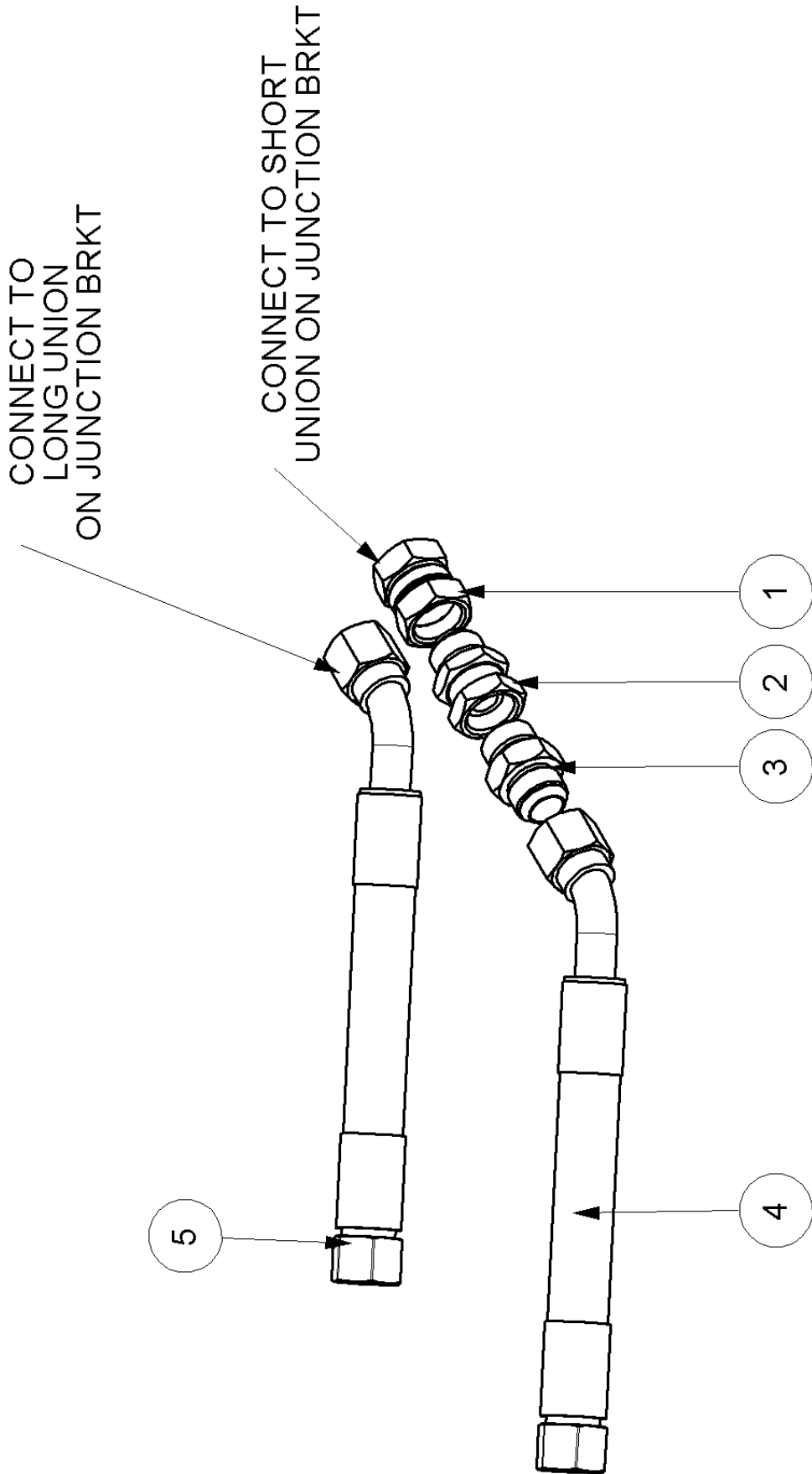
Ref	Part No	Description	Qty
1	21833.01	COVER	1
2	22405.03	CASING W/ASSY	1
3	22406.01	GUARD BAR	1
4	22407.01	CLAMP STRIP	2
5	22407.02	CLAMP STRIP	1
6	22408.01	SKID -LH	1
7	22408.02	SKID -RH	1
8	22409.01	CLAMP PLATE	2
9	41296.03	FLAP	2
10	7190035	FLAP	11
11	7290347	CLAMP STRIP	1
12	7290348	FLAP	1
13	9100104	WASHER	2
14	9163004	NUT	30
15	9163005	NUT	13
16	9163006	NUT	7
17	9293054	BOLT	22
18	9313045	SCREW	4
19	9313054	SCREW	6
20	9313056	SCREW	6
21	9313065	SCREW	9
22	22421.01	PIN	1
23	9313076	SCREW	1
24	23390.01	PRESSING	1

1039736 - BRACKET MODULE



## 1039736 - BRACKET MODULE

Ref	Part No	Description	Qty
1	22386.08	PIVOTING W/ASSY	1
2	0901121	GREASER	1
3	1337114	BUFFER	4
4	21385.01	BUSH	2
5	8629219	SEAL	2
6	41580.01	PLUG	2
7	9100105	WASHER	4
8	9163005	NUT	4
9	12.714.75	BOLT	4
10	T7942	NUT	4

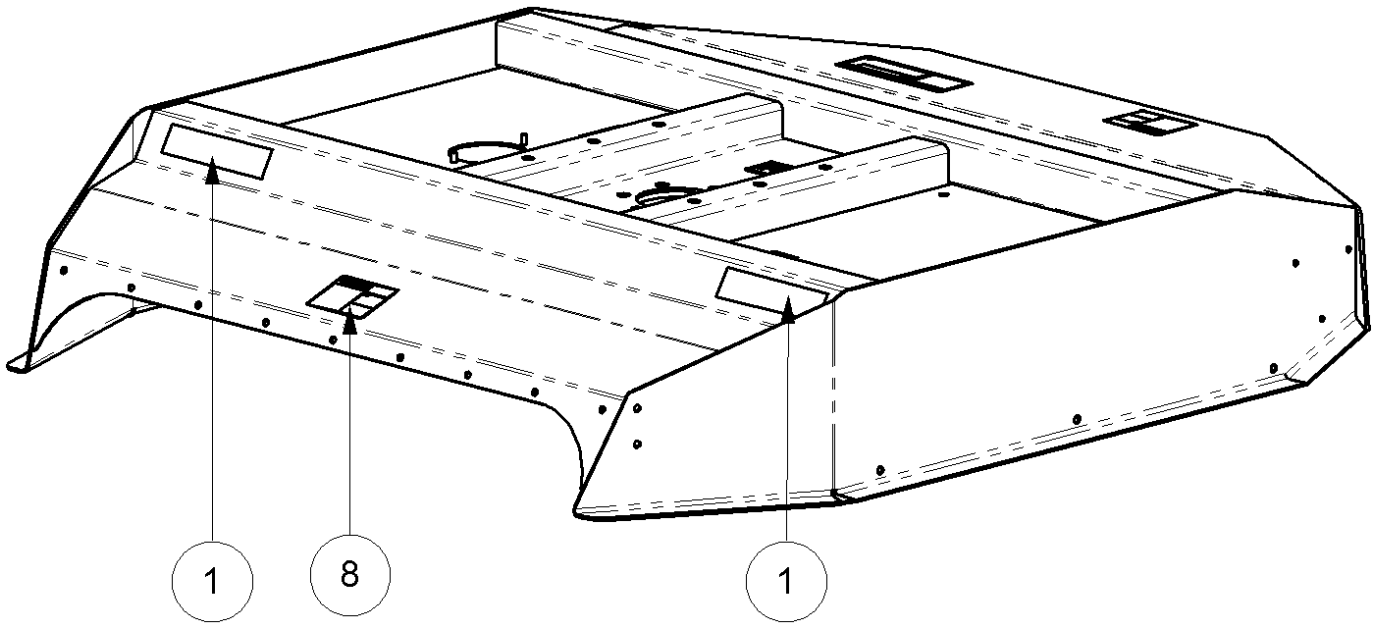
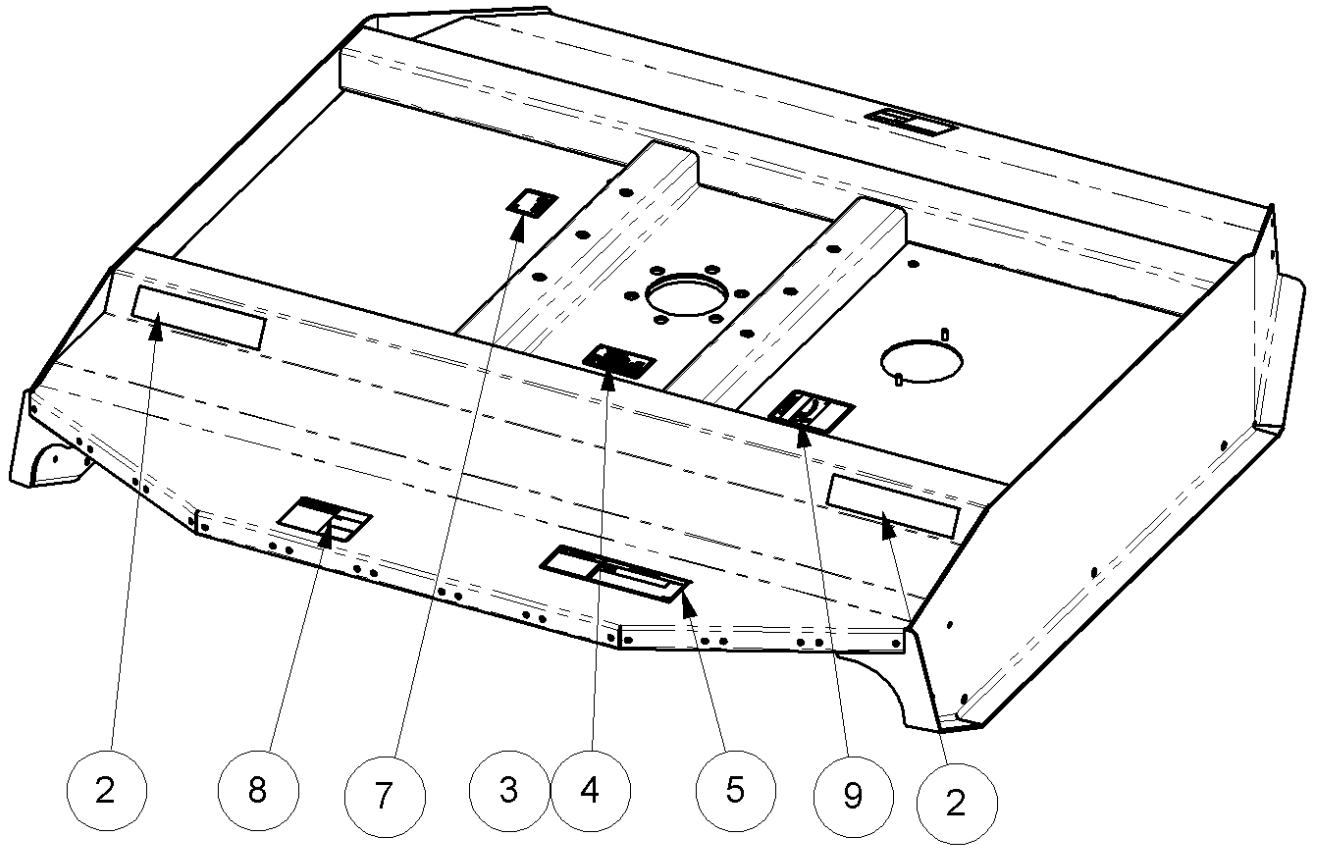


## 1039740 - HYD MODULE

Ref	Part No	Description	Qty
1	8581595	ADAPTOR	1
2	8581233	ADAPTOR	1
3	8581256	ADAPTOR	1
4	41677.13	HOSE	1
5	41677.14	HOSE	1



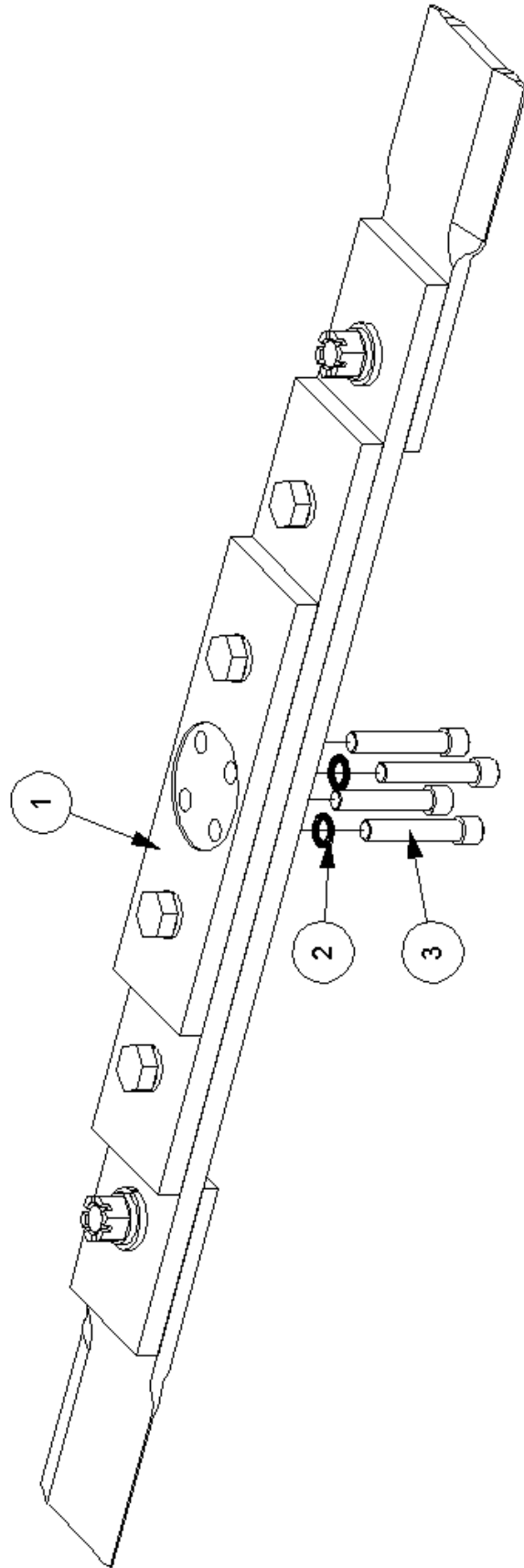
1039769 B - DECAL



## 1039769 B - DECAL

Ref	Part No	Description	Qty
1	1458392	DECAL	2
2	1458393	DECAL	2
3	7103230	RIVET	4
4	41.094.12	SERIAL PLATE	1
5	D559	DECAL	1
7	D621	DECAL	1
8	D626	DECAL	2
9	D619	DECAL	1

1039770 - BLADE BAR ASSY

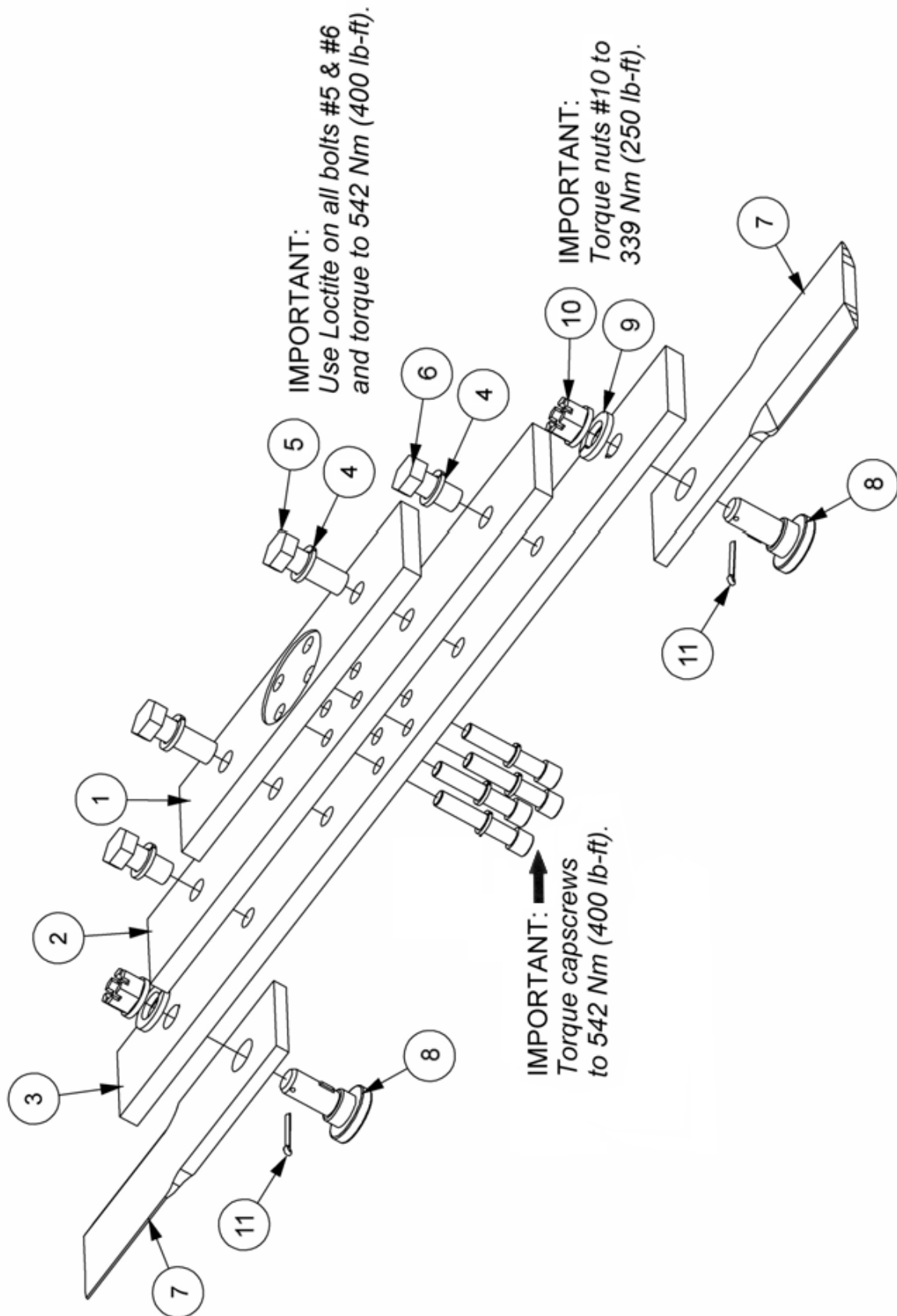


TIGHTEN TO 542 NM(400 FT.LBS)

## 1039770 - BLADE BAR ASSY

Ref	Part No	Description	Qty
1	02782300	BLADE BAR ASSY	1
2	B001020	WASHER	4
3	02782000	CAPSCREW	4

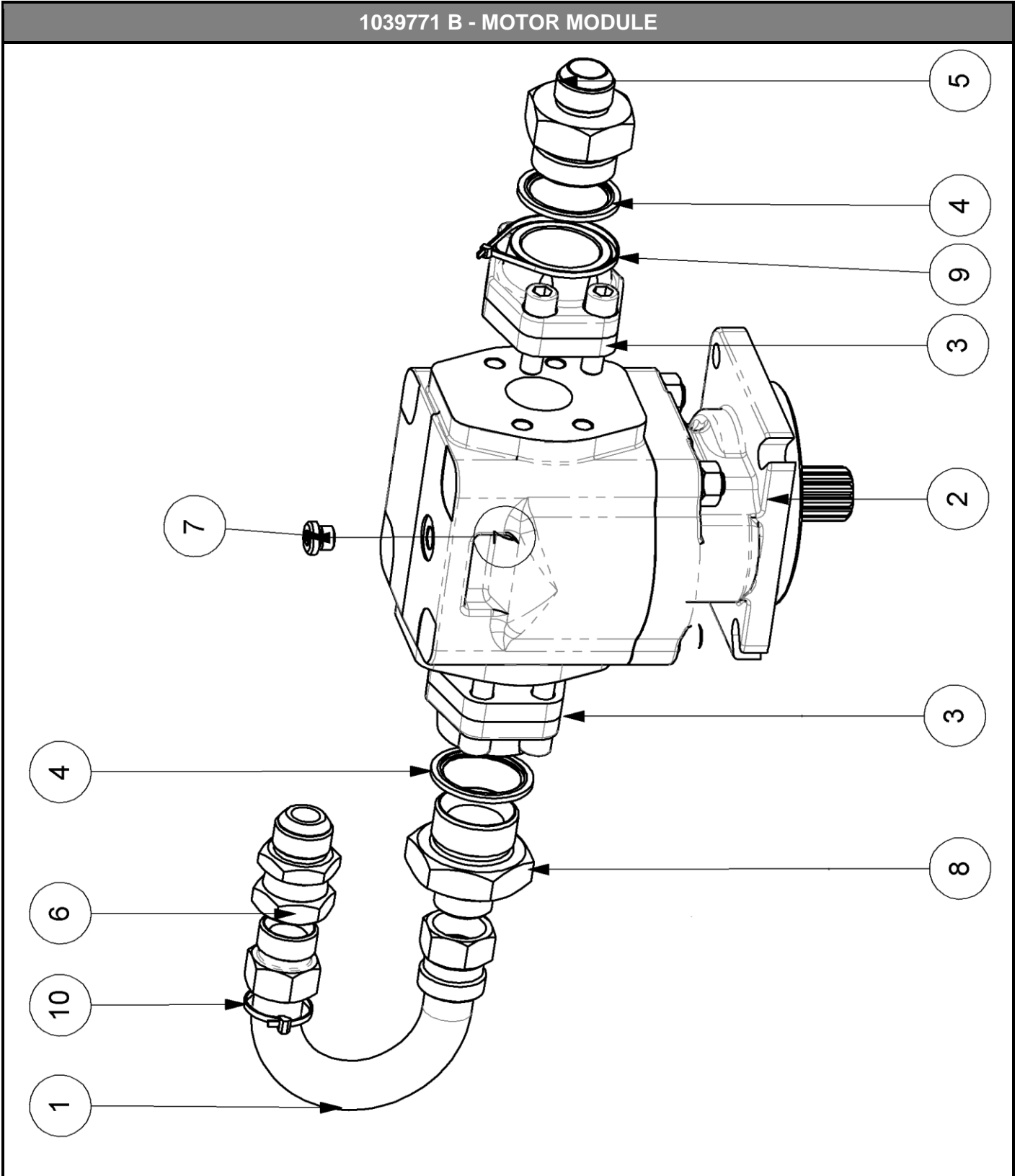
02782300 - BLADE BAR ASSY



## 02782300 - BLADE BAR ASSY

Ref	Part No	Description	Qty
1	02781600	BLADE BAR LEAF	1
1	02782300AP	BLADE BAR ASSY INC BLADES AND	1
2	02781700	BLADE BAR LEAF	1
3	02781800	BLADE BAR LEAF	1
4	02032200	SPRING WASHER	4
5	02782100	HEX SCREW	2
6	02782200	HEX SCREW	2
7	02761500	BLADE SET	1
8	02782900	BLADE BOLT	2
9	02957089	SPRING WASHER	2
10	00020900	FLANGE NUT (SLOTTED)	2
11	00023200	ROLL PIN	2

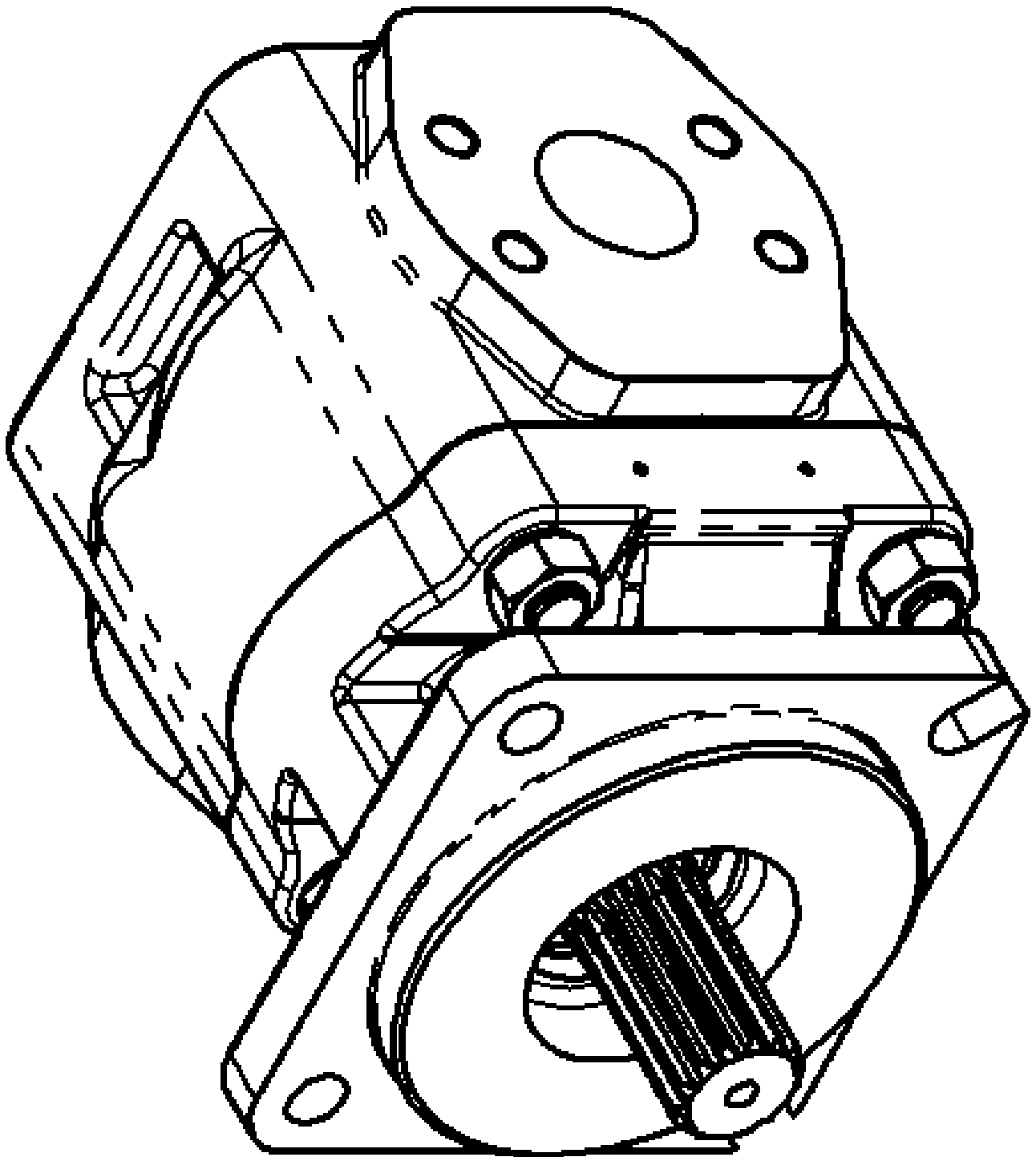
1039771 B - MOTOR MODULE



## 1039771 B - MOTOR MODULE

Ref	Part No	Description	Qty
1	46043.01	PIPE	1
2	8301334	MOTOR	1
2.1	8699263	SEAL KIT	0
2.2	8629265	SEAL	0
3	8581635	FLANGE	2
4	8650224	SEAL	2
5	08.955.35	ADAPTOR	1
6	8581233	ADAPTOR	1
7	8581583	ADAPTOR	1
8	8581291	ADAPTOR	1
9	22941.03	TIE	1
10	22941.02	CABLE TIE -B	1





## 8301334 - MOTOR

Ref	Part No	Description	Qty
1	8629265	SEAL	0
2	8699263	SEAL KIT	0



**Tiger Corporation**

3301 N. Louise Ave  
Sioux Falls, SD 57107

Toll-Free: 1-800-843-6849

Fax: 1-800-716-7620