



Models 2010X/2410X/2410XL

Hydraulic Snowblowers

For

Skid Steer Loaders

Operator's Manual

Maintenance and Parts Information

**Do not use or operate this machine until this
manual has been read and understood.**



Read the Operation & Maintenance Manual entirely. When you see this symbol, the subsequent instructions and warnings are serious – follow without exception. Your life and the lives of others depend on it!

IMPORTANT

If this machine is used by an employee or is loaned or rented to others, make certain that the operator(s) prior to operating:

- **Is instructed in safe and proper use.**
- **Reviews and understands the operation and maintenance manual(s) pertaining to the machine.**

Remember, the operator is responsible for the safe operation and maintenance of the machine. Most accidents can be prevented. Good safety practices not only protect you, but also the people around you.

NOTE: *Erskine Attachments LLC reserves the right to make improvements in design or changes in specifications at any time without notice and without incurring any obligations to install them on units previously sold.*

FOREWORD	4
SAFETY	5
SERIAL NUMBER/DECAL LOCATION	6-7
SET UP ASSEMBLY	8-12
MOUNTING INSTRUCTIONS	13-15
OPERATING INSTRUCTIONS	16-17
ROUTINE MAINTENANCE	18-22
TROUBLESHOOTING	23
PARTS INFORMATION	24-31
WIRE HARNESS INFORMATION	32
GENERAL SPECIFICATIONS	33-34
WARRANTY	35

REFERENCE INFORMATION

Write the serial number for your attachment in the spaces below. Always refer to this serial number when calling for service or parts.

Serial Number.....

YOUR ATTACHMENTS DEALER

ADDRESS:

PHONE:

CONTACT:

FOREWORD

To The Owner/Operator:

DO NOT use or operate this machine until this manual has been read and understood. If you require additional information, contact your Dealer or Erskine Attachments LLC.

Operation and Maintenance Manuals are written to give the owner/operator instructions on the safe operation and maintenance of the product. For your safety and the safety of other persons, you must not operate, service, inspect or otherwise handle this equipment before you have reviewed and understood the Operation and Maintenance Manual(s) pertaining to the attachment and the attachment carrier, hereafter referred to as "loader".

Throughout this manual reference may be made to the left hand (LH) or right hand (RH) side. These terms are used as viewed from the operator's seat facing forward.

In order to get the optimum performance and efficiency that has been designed into this product, read this manual thoroughly before setting-up, operating, or performing maintenance procedures on the machine.

It is the responsibility of the user to read the operator's manual and comply with the safety instructions, operating instructions and maintenance guidelines set forth in this manual.

The user is responsible for inspecting the machine daily, and for having parts repaired or replaced when continued use of the machine would cause damage, excessive wear to other parts or make the machine unsafe for continued operation.

The signal words **CAUTION**, **WARNING**, or **DANGER** are used to indicate degree of hazards and to warn against unsafe practices that may cause personal injury and are used with appropriate safety instructions. These signal words are not to be ignored; your safety is involved.



CAUTION: Indicates a potentially hazardous situation which, if not avoided, may result in minor or moderate injury.



WARNING: Indicates a potentially hazardous situation which, if not avoided, could result in death or serious injury.



DANGER: Indicates a potentially hazardous situation which, if not avoided, will result in death or serious injury.

The word **NOTE** is used to convey information that is out of context with the manual text; special information such as specifications, techniques, reference information, and other information of a supplementary nature.

The word **IMPORTANT**, is used in the text when immediate damage will occur to the machine due to improper technique or operation. **IMPORTANT** will apply to the same information specified by **NOTE**, only of an immediate and urgent nature.

Erskine Attachments LLC cannot anticipate every possible circumstance that might involve potential hazard. The safety messages found in this manual and on the machine are therefore not all inclusive. If an operating procedure, tool device, maintenance or work method not specifically recommended is used; you must satisfy yourself that it is safe for you and others. You must also ensure that the machine will not be damaged or made unsafe by the procedures you choose.



Whenever you see this symbol, it means Attention! Become Alert! Your Safety is involved. Failure to obey warnings or instructions can cause personal injury or death.

Operating instructions must be given to everyone before operating this machine and at least once a year thereafter in accordance with OSHA regulations.

General Safety Instructions

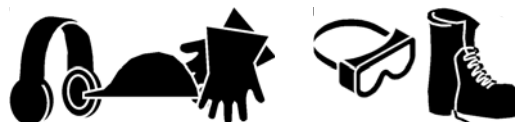
- Read the operator's manual for the "Skid Steer Loader" to become totally familiar with the controls and instruments. Know how to stop all equipment operation in case of emergency.
- Avoid the possibility of personal injury and/or machine damage. **NEVER** exceed the maximum recommended input power or speed specifications for the attachment.
- Check and be sure all operating controls are in neutral before starting the engine.
- Disengage hydraulic drive, lower the attachment to rest flat on the skid shoes, stop engine, set park brake, and wait for all motion to stop before leaving the operator's seat for any reason.



WARNING: *Before adjusting, or servicing the unit, stop the engine and relieve all hydraulic pressure by opening the control valve.*

- Keep all shields, guards, and covers in place.
- Stay clear of the attachment when machine is running.
- **NEVER** make adjustments, lubricate, or perform any service on the machine while it is in operation.
- **NEVER** operate this attachment within 100 feet (30m) of people, or pets.
- **NEVER** operate near embankments or terrain that is so steep that rollover could occur.
- **NEVER** allow children or untrained persons to operate.
- **DO NOT** permit riders on equipment.
- Use adequate safety warning lights and devices as required by local regulations.
- Obey all local laws and regulations regarding machine operation on public property.

- This attachment is designed for blowing snow only. **NEVER** use this attachment for purposes other than intended.
- **NEVER** modify equipment or add attachments that are not approved by Erskine Attachments LLC.
- Remember, **YOU** are responsible for the safe operation and maintenance of the equipment. Most accidents can be prevented. Good safety practices not only protect you, but also the people around you.



Wear Protective Equipment

- Protective clothing and equipment should be worn.
- Wear clothing and equipment appropriate for the job. Avoid loose fitting clothing.
- Prolonged exposure to loud noise can cause hearing impairment or hearing loss. Wear suitable hearing protection such as earmuffs or earplugs.
- Operating equipment safely requires the full attention of the operator. Avoid wearing radio headphones while operating equipment.



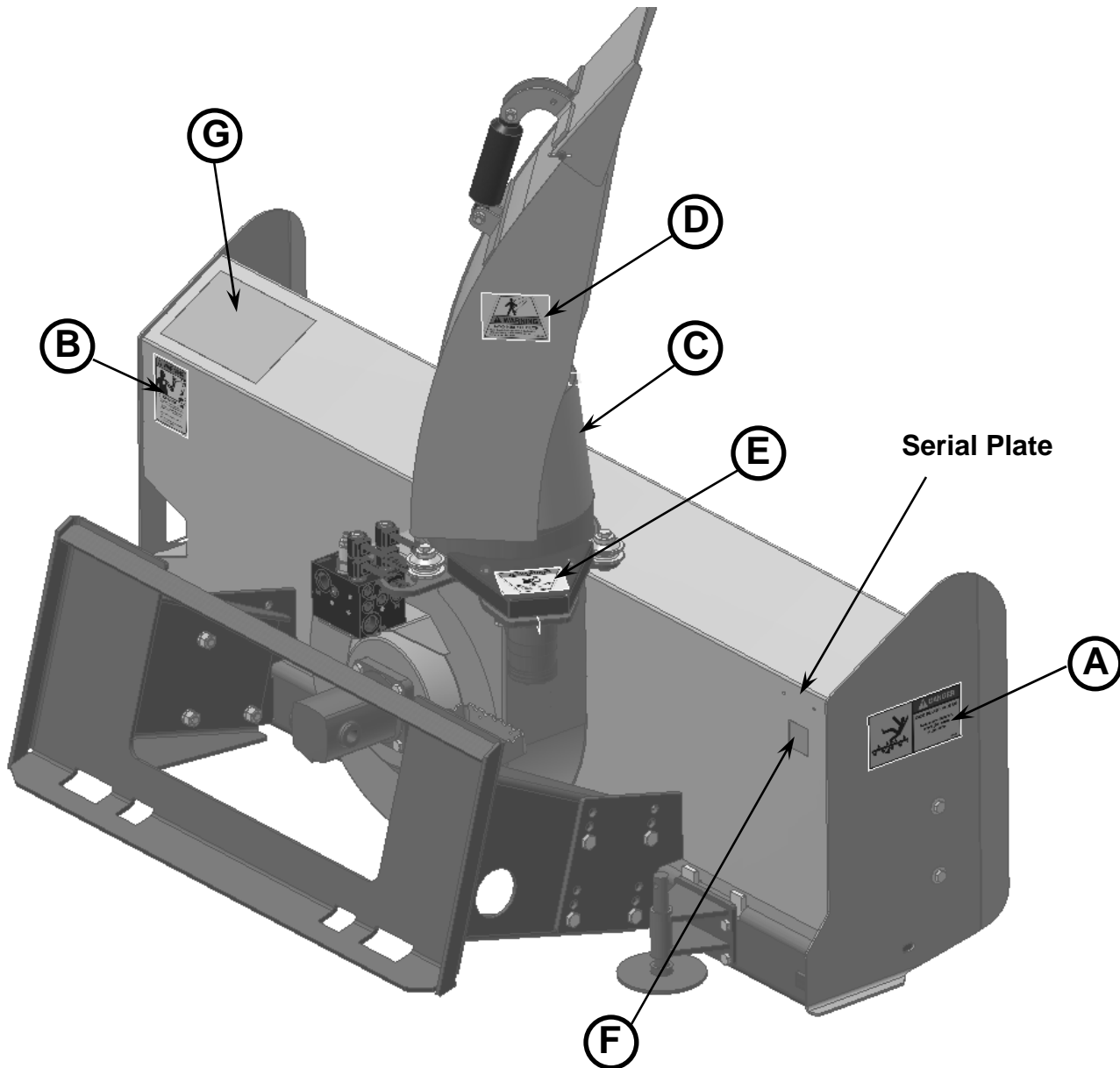
Avoid High Pressure Fluids Hazard

- Escaping fluid under pressure can penetrate the skin causing serious injury.
- Avoid the hazard by relieving the pressure before disconnecting hydraulic lines.
- Use a piece of paper or cardboard, NOT BODY PARTS, to check for suspected leaks. Wear protective gloves and safety glasses or goggles when working with hydraulic systems.
- If an accident occurs, see a doctor immediately. Any fluid injected into the skin must be surgically removed within a few hours or gangrene may result.

SERIAL NUMBER AND SAFETY DECAL LOCATIONS

Serial Number Location:

It is important to refer to the serial number of your attachment when making repairs or ordering parts. Early or later models (identification made by serial number) may use different parts, or it may be necessary to use different procedures in doing a specific operation. Serial number plate is located on the right rear side of body.



SERIAL NUMBER AND SAFETY DECAL LOCATIONS

(A)



Part number: 102935

Location: On each side of blower assembly

Quantity: 2

(C)



Part number: 102946

Location: Front of chute assembly, adjacent to chute opening

Quantity: 1

(E)



Part number: 103206

Location: Chute rotation chain cover.

Quantity: 1

(G)

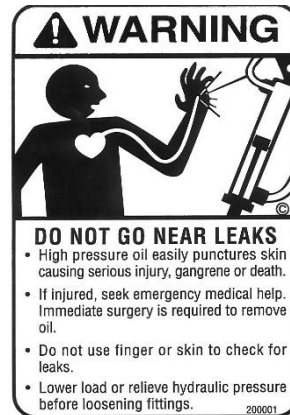
Part number: 320751 (2010) OR 320752 (2410)

Model Decal

Location: back left side of blower

Quantity: 1

(B)



Part number: 200001

Location: Back right side of blower assembly

Quantity: 1

(D)



Part number: 102957

Location: Sides of chute assembly

Quantity: 2

(F)

Part number: 300445 (Motor Package)

Location: back of blower under serial plate

Quantity: 1

Safety Decals Locations:

The locations of the safety decals are shown. If these decals are missing, damaged, or painted over they must be replaced. Call Erskine Attachments LLC (218-687-4045) for replacement decals.

SET UP ASSEMBLY

CRATE REMOVAL AND ASSEMBLY

Remove screws to disassemble crate.

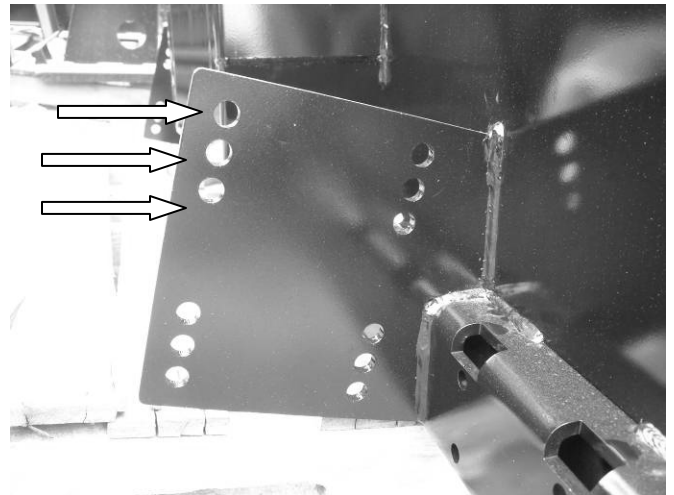
Remove chute from plastic bags.



The mounting plate can be installed in the “lower” position for most skid steers with standard sized tires, or in the “middle” or “upper” position for skid steers with taller or oversized tires. The mounting plate position can also be adjusted to change the pitch of the blower in the working position.

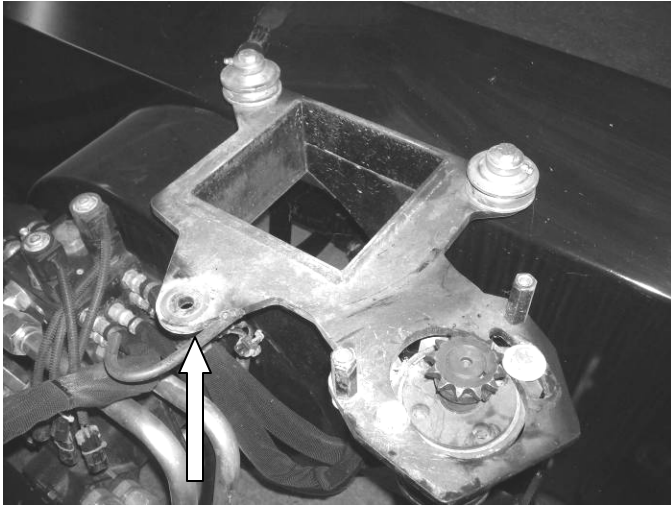


CAUTION: *Make sure the bolts on the mounting plate are tight. If you remove the mounting plate, retighten the bolts to 130 ft-lbs.*

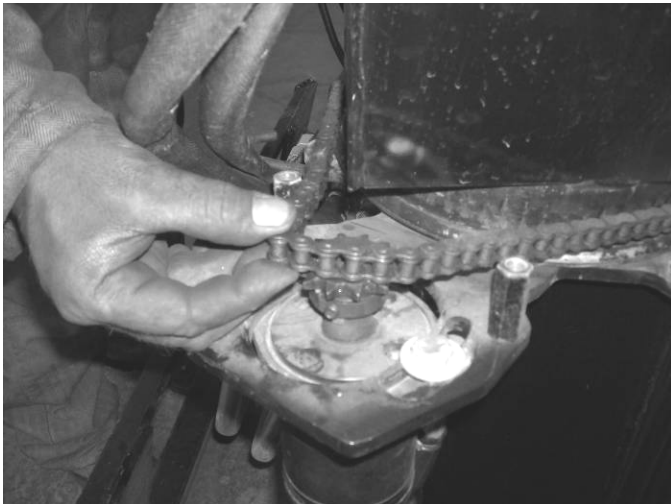


SET UP ASSEMBLY

DISCHARGE CHUTE INSTALLATION



Remove one of the roller guides from the blower housing by removing the bolt securing the roller guide.



After unpacking the chute, slip the chute into the grooves on the two remaining roller guides.

Reinstall the roller guide and bushing with bolt and lock nut.

IMPORTANT: *Tighten lock nut to 75 ft-lbs*

Rotate the chute to the straight forward position.



Remove the chain shield.

Loosen the chute rotation motor bolts. Push the motor all the way towards the chute. Install the No. 40 roller chain around the sprocket.

Tighten the chute chain by pulling the motor outward to remove all slack. Tighten the motor bolts and install the chain shield.



CAUTION: *Do not operate the snowblower without the chain shield in place.*

SET UP ASSEMBLY

DISCHARGE CHUTE INSTALLATION (continued)

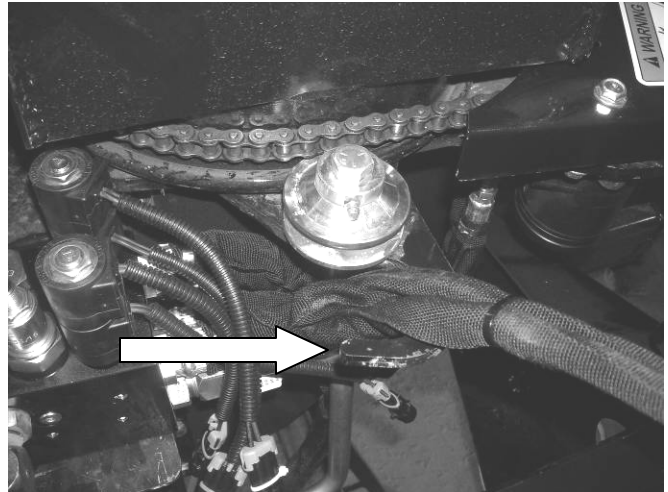
Install the cylinder with the rod end to the deflector ears. Fasten with two 1/2" bolts.

NOTE: *Usually the hoses will remain connected to the cylinder when the chute is removed.*



IMPORTANT: *Be sure the hoses are routed properly through the hose "hook" to allow the chute to rotate freely in both directions without the hoses getting caught.*

PROPER HOSE ROUTING IS THE RESPONSIBILITY OF THE OWNER AND/OR OPERATOR. PINCHED OR STRETCHED HOSES ARE NOT COVERED UNDER WARRANTY.



Adjusting the Skid Shoe Height

NOTE: *Skid shoes on the 2010, 2410 and 2410XL snowblowers are optional equipment.*

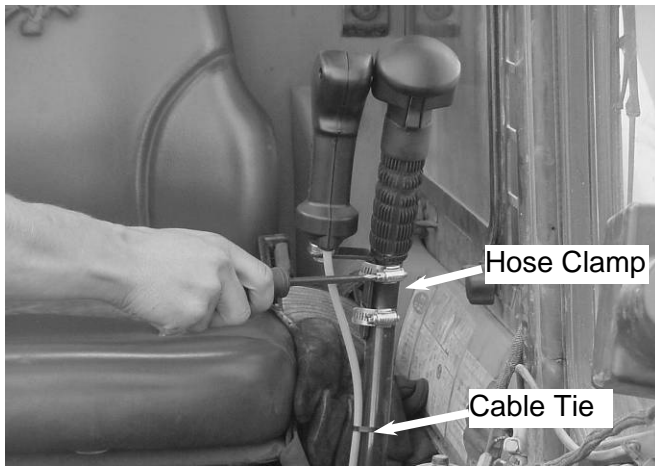
Raise the loader arms and tilt the snowblower back just enough to remove the skid shoe (about 12 inches off the ground).

Stop the engine and exit the loader.

Remove the lynch pin on the skid shoes. Install washers on the bottom for the desired skid shoe height. Reinstall the lynch pin.



SET UP ASSEMBLY



Wire Harness Installation

A wire harness is needed to activate the rotation and deflection. If the loader is equipped with an attachment control package, the appropriate harness should be installed from the factory.

If the snowblower was ordered with the Pistol Grip Control Harness, follow these instructions:

1. Install the control handle on either steering level, whichever you prefer, with (2) hose clamps.

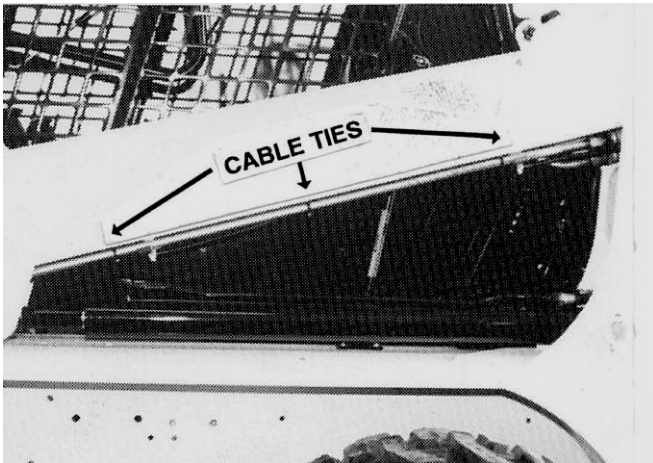
IMPORTANT: *The control handle bracket can be positioned several different ways. We recommend it be positioned as shown.*

2. Put a cable tie around the wiring harness and the steering lever.
3. Install the wire harness receptacle bracket on either the loader arm or near the hydraulic quick couplers.

IMPORTANT: *It may be necessary to make an adapter bracket in order to attach the wire harness to the loader.*

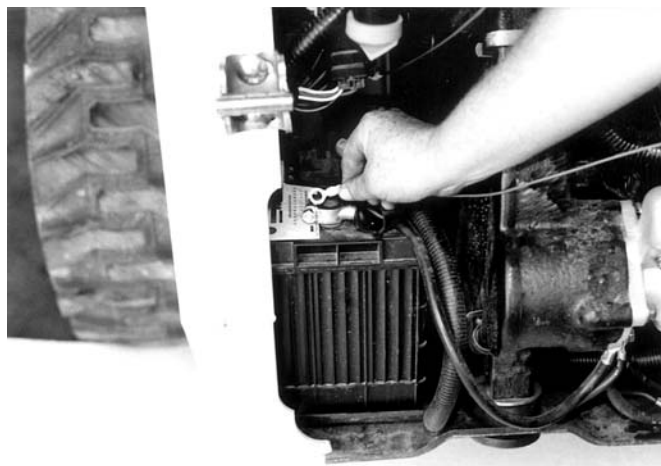
4. Route the wire harness back along the loader arms and fasten with cable ties.

IMPORTANT: *Be sure to leave some slack in the wire harness where the loader arms pivot to prevent stretching the harness. Make sure the harness is fully secured to prevent snags or pinching.*



SET UP ASSEMBLY

5. Open the rear door. Pull the excess wire harness into the engine compartment.
6. Raise the operator cab. (See loader Operation and Maintenance Manual for the correct procedure.)



7. Connect the red fused wire to the positive battery terminal or to a suitable accessory wire with a minimum rating of 5 amps. Route the wiring along the loader main frame toward the front of the loader.

Connect the black wire from the harness to a frame ground.

8. Fasten the control handle wire harness connector to the main wire harness connector.



NOTE: *Secure the wire harness in place with plastic cable ties, making sure it is clear of extra hot areas or any moving parts on the engine or loader.*

9. Lower the cab. (See loader Operation and Maintenance Manual for the correct procedure.)

NOTE: *Be sure the control handle wire harness is properly positioned as the cab is lowered.*

PROPER WIRE HARNESS ROUTING IS THE RESPONSIBILITY OF THE OWNER AND/OR OPERATOR. PINCHED, WORN, MELTED OR STRETCHED WIRE HARNESSES ARE NOT COVERED UNDER WARRANTY.

MOUNTING INSTRUCTIONS

After the initial set-up assembly is completed use the following procedure to mount the snowblower to the loader for user operation.



1. Use the step, safety treads, and grab handles to get on and off the loader and snowblower.
2. Sitting in the operator's seat, lower seat bar and fasten the seat belt.



3. Drive the loader to the rear of the snowblower. Put the loader quick attach coupler into the snowblower mounting bracket.
4. Tilt the loader coupler backward a small amount until it is fully engaged in the snow blower mounting bracket.
5. Stop the engine and engage the parking brake.



6. Secure the coupler locking mechanism that attaches the snow blower to the loader.



WARNING: *Coupler wedges or pins must extend through the holes in attachment. Levers must be fully down and locked. Failure to secure wedges or pins can allow attachment to come off and could cause injury or death.*

MOUNTING INSTRUCTIONS

NOTE: Attachment is shipped with 12FJX (1-1/16" Female JIC Swivel) fittings on the ends of the lead hoses.

7. Connect the hydraulic quick couplers from the snowblower to the loader.

IMPORTANT: *Wipe the ends of the hydraulic quick couplers (both lead and loader) with a rag to remove any possible contamination. Contamination can cause hydraulic components to fail and is not covered under warranty.*

NOTE: Make sure the pressurized hose is routed to the "P" port of the valve block. If it isn't, the blower will not operate properly.

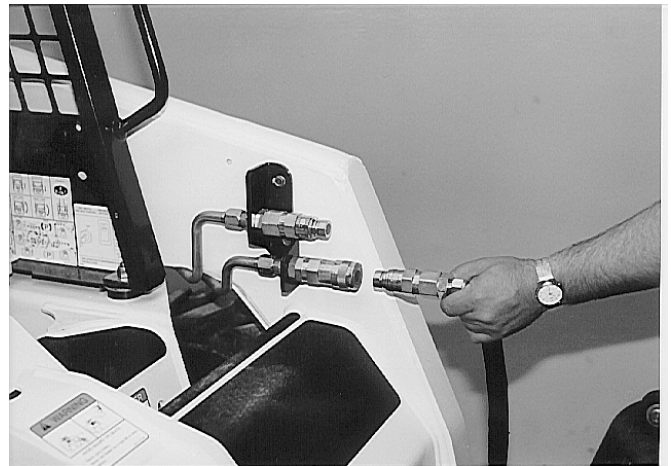
NOTE: The pressure line on the snowblower has a RED cable tie on the hose end.

IMPORTANT: *Make sure the quick couplers are fully engaged. If the quick couplers do not fully engage, check to see that the couplers are the same size and brand. Do not force the quick couplers together.*

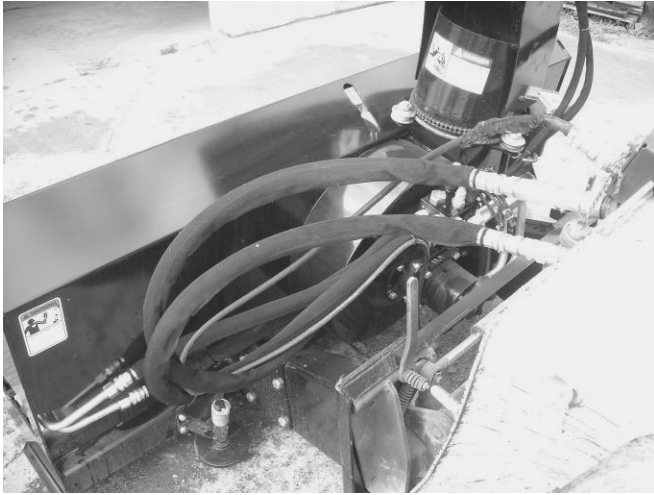
NOTE: If the quick couplers will not connect together due to thermal expansion of the fluid in the hoses, stop the engine and activate the auxiliary hydraulic control to relieve the pressure.

See loader operator's manual for details on identifying the correct pressurized hydraulic coupler.

If you are operating the loader controls correctly and the snowblower still does not work, try switching the hydraulic couplers around on the snowblower lead hoses. This will effectively reverse the flow to the motor.



MOUNTING INSTRUCTIONS



NOTE: *Make sure the hoses are properly routed to fit your specific loader. If the hoses are not routed correctly, hoses may get pinched or rub on tires. Be sure to check the hose routing through the full range of intended motion of the attachment before operating it. More than one routing may be acceptable depending on the loader. Pick the routing that best suits your loader.*

PROPER HOSE ROUTING IS THE RESPONSIBILITY OF THE OWNER AND/OR OPERATOR. PINCHED OR STRETCHED HOSES ARE NOT COVERED UNDER WARRANTY.



8. Connect the snowblower wire harness to the loader wire harness receptacle.
9. Mounting is now complete and you are ready to use the snowblower. Use reverse order of above instructions to dismount the snow blower from the loader.
10. Run the snowblower and check all operational functions. Set up assembly is now complete.

OPERATING INSTRUCTIONS



WARNING: *DO NOT operate from any position except seated in the operator's seat with the seat belt fastened. DO NOT permit riders.*



IMPORTANT: *Before operating the attachment, perform the service schedule for routine maintenance.*

1. Make sure area is free of obstructions that might be picked up and thrown.
2. With the operator in the seat of the loader, the seat belt fastened and the seat bar lowered (if so equipped), start the engine.



WARNING: *Keep bystanders away! Thrown objects and ice can cause serious injury.*



CAUTION: *Carry attachment low to the ground while driving.*

3. Rest the snowblower on the skid shoes (if equipped) and/or cutting edge depending on the application.
3. Make sure the skid shoes are set to the position that will most benefit your application.
4. If desired, the loader lift arms can be put in the float position. (See loader Operation and Maintenance Manual.)
5. Activate the auxiliary hydraulic system to start the snow blower turning. (See loader Operation and Maintenance Manual.)



CAUTION: *Engine must be at idle speed when engaging auxiliary hydraulic system.*

NOTE: *Certain loaders may a special wire harnesses to operate in high flow mode. Others require the control switches to be operated in a specific way. It may also be necessary to switch the hose couplers around to match your loader. (See loader operation and maintenance manual)*

IMPORTANT: *OPERATING A LOW FLOW SNOWBLOWER IN HIGH FLOW MODE WILL CAUSE SERIOUS DAMAGE AND VOIDS ALL WARRANTIES.*



OPERATING INSTRUCTIONS



WARNING: *DO NOT operate from any position except seated in the operator's seat with the seat belt fastened. DO NOT permit riders.*

Hydraulic Chute Rotation and Deflection

All chute functions can be activated by the steering lever switches on the loader (if loader is fully equipped), or with the Pistol Grip Control Harness.

FUNCTIONS ARE ACTIVATED AS FOLLOWS:

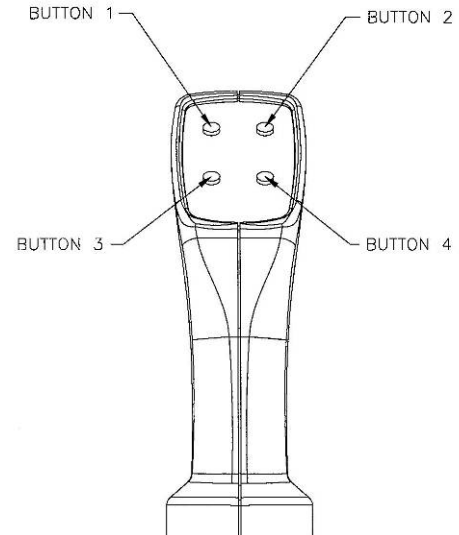
- (A) Button 1 **moves** deflector UP.
- (B) Button 2 **moves** deflector DOWN.
- (C) Button 3 **rotates** chute LEFT.
- (D) Button 4 **rotates** chute RIGHT.

NOTE: *For steering lever functions, refer to your loader Operation and Maintenance Manual.*

After you become familiar with the controls, direct the chute towards an open space and away from bystanders or obstructions. Operate the engine at full throttle and start moving the loader forward into the snow.

NOTE: *The loader travel speed is determined by the depth and density of the snow.*

IMPORTANT: *DO NOT operate the snowblower if excessive vibration is present. Serious damage can occur. Check auger and fan.*

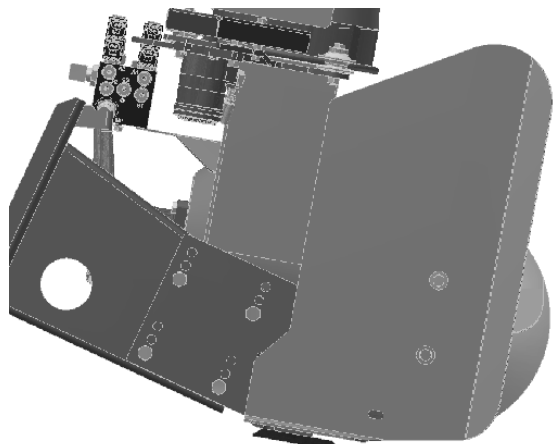


WARNING: **AVOID INJURY OR DEATH.** *Never put hands, feet, or objects near the auger or fan when engine is running.*

CUTTING EDGE ANGLE

The snowblower angle can be varied front to back with the mounting plate forward and back. This allows for non-cutting, neutral cutting, and aggressive cutting positions depending on the conditions. The snowblower will not cut when in the rolled back position and will cut aggressively when rolled forward.

IMPORTANT: *DO NOT operate the snowblower with a rolled forward angle of more than 10 degrees (as shown at right) or the endplates and auger may strike the ground leading to excessive wear and poor performance.*



AGGRESSIVE CUTTING

ROUTINE MAINTENANCE

It is the operator's responsibility to make daily inspections of the loader and attachment for damage, loose bolts, fluid leaks, or anything else that could cause a potential service or safety problem. Preventive maintenance is the easiest and least expensive type of maintenance.

IMPORTANT: *Bolts and set screws can loosen after initial usage. After the first hour of operation check all bolts and set screws.*



WARNING: *Lower the snowblower to rest flat on the cutting edge, shut down the engine, relieve the hydraulic pressure to the snowblower, wait for all motion to stop, and set park brake before leaving the operator's seat to perform service of any kind.*

LUBRICATION

Lubrication Legend



Multipurpose spray lube



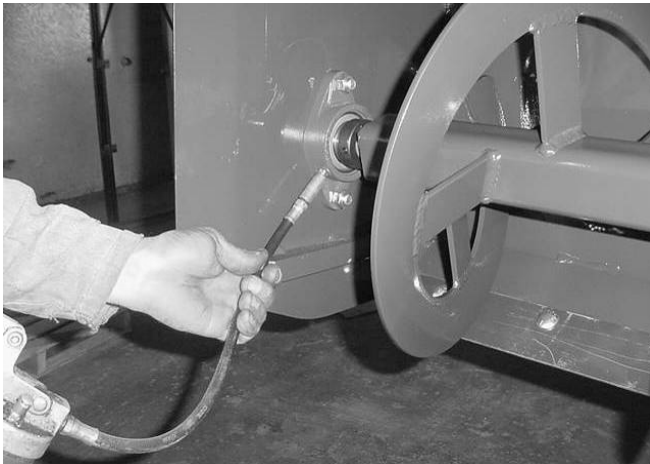
No. 2 Lithium base gun grease



Clean engine oil

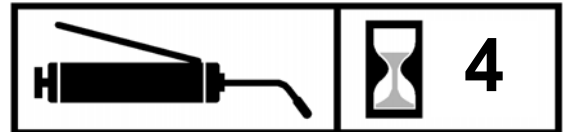


Intervals at which lubrication is required



Use No. 2 lithium base gun grease when lubricating all snowblower grease fittings.

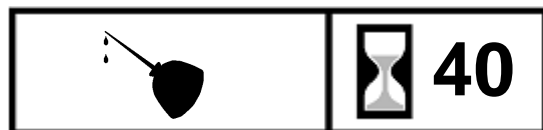
Grease the bearing on the end of the auger after every **4 hours** of operation.



WARNING: *These are requirements. It is the responsibility of the owner/operator to make sure the attachment is serviced on a daily basis. Improper maintenance can cause extensive damage to the attachment and/or your equipment.*



Use clean engine oil to lubricate the chute rotation chain after every **40 hours** of operation.



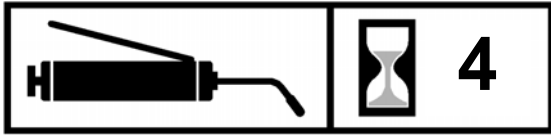
ROUTINE MAINTENANCE

LUBRICATION (continued)

Grease the auger drive after every **4 hours** of operation.

NOTE: There are (2) grease fittings, one on each side of the auger tube.

Grease the (3) chute roller guide bushings also after every **4 hours** of operation. (Not Pictured)



HYDRAULIC RELIEF VALVE ADJUSTMENT

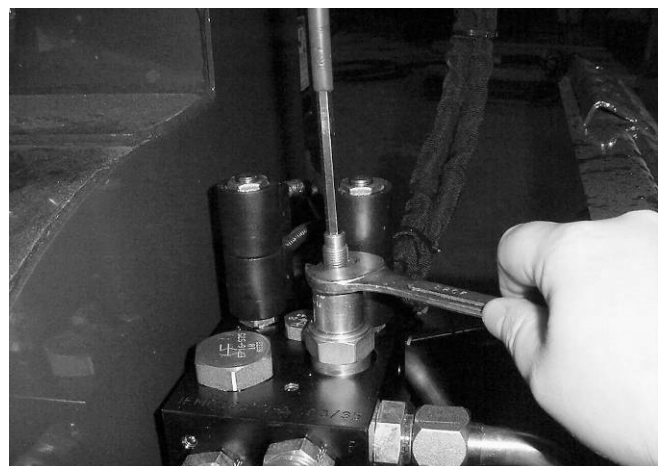
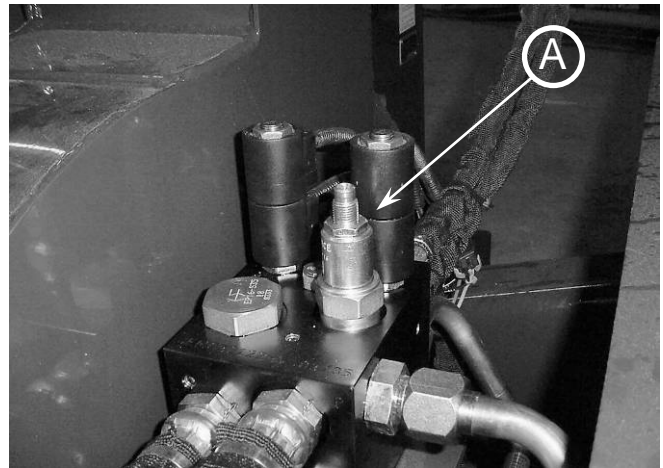
The fan is shear-protected by the loader hydraulic system pressure relief valve. No adjustments are required.

The auger is shear-protected by pressure relief valve 'A' located in the hydraulic control manifold on the rear of the snowblower, directly above the fan motor.

NOTE: The auger relief valve is set at the factory to assure the best performance in average conditions. If the auger should stall too easily, the relief valve can be adjusted as follows:

- A. Loosen the lock nut on valve 'A'.
- B. Turn the set screw in one turn.
- C. Tighten the lock nut.
- D. If the auger still stalls, adjust the relief valve again by repeating steps A through C.

NOTE: Do not adjust the relief valve more than one turn at a time or a total of more than 4 turns. If the auger still stalls, look for other problems.



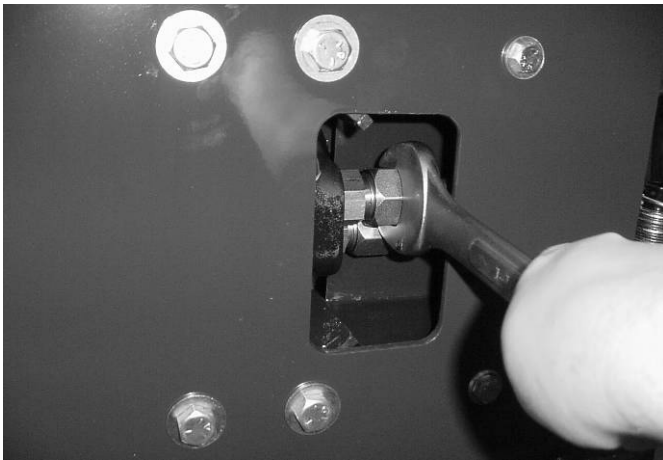
ROUTINE MAINTENANCE

AUGER REMOVAL AND INSTALLATION

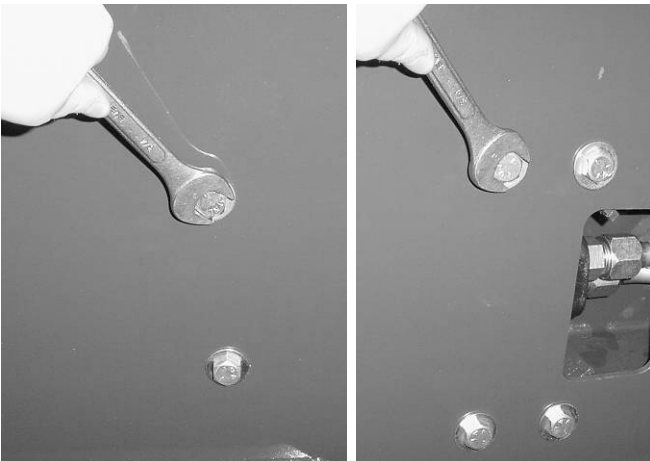


1. Loosen the setscrew on the bearing eccentric locking collar. Using a hammer and punch, rotate the collar in the opposite direction of auger travel.

NOTE: *This frees up the bearing and allows it to slide on the auger shaft.*



2. Disconnect the tubelines from the auger motor.



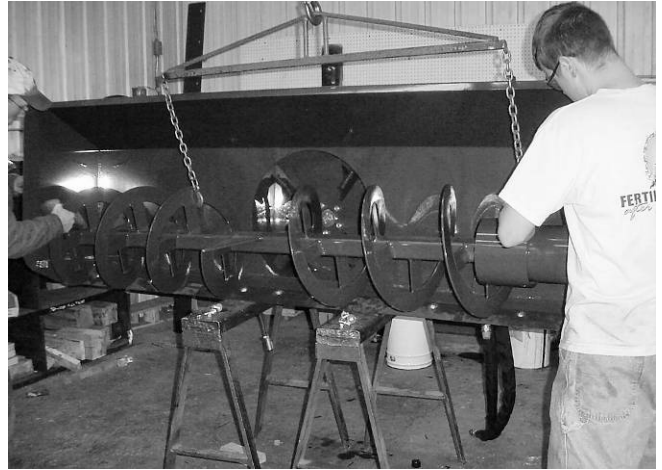
3. Remove the two bearing retaining bolts and the four auger motor housing bolts.

NOTE: *Pry the bearing flange approximately 1/4" to the inside to allow clearance for the auger to be removed.*

ROUTINE MAINTENANCE

AUGER REMOVAL AND INSTALLATION (continued)

4. Slide the auger straight forward and out of the blower body.



5. The hydraulic motor and housing can now be removed from the auger.

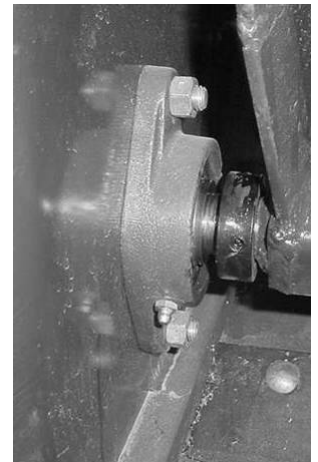
6. **To install, use reverse procedure.**

7. When everything is assembled and tightened, with the exception of the bearing locking collar, the auger should have from 1/4" to 1/2" endplay travel. Slide the auger toward the auger motor until it bottoms out. Then, tap it back in the opposite direction approximately 1/16".



8. Tighten the eccentric locking collar by using a hammer and punch to rotate the collar in the direction of the auger travel. Tighten the setscrew.

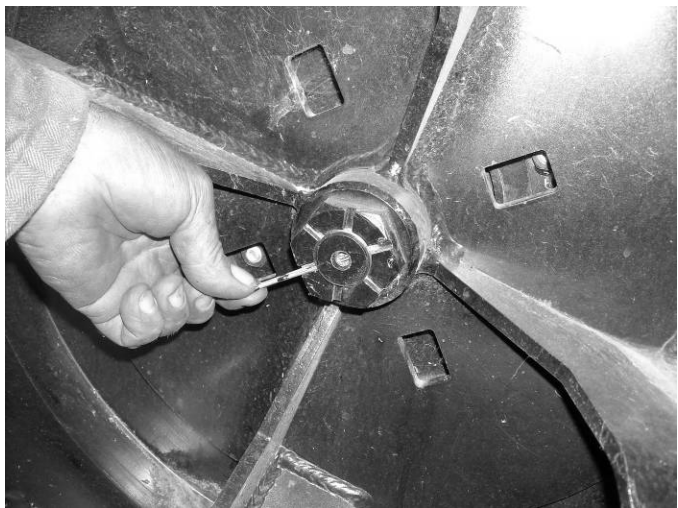
NOTE: *Grease the auger drive when installing.*



ROUTINE MAINTENANCE

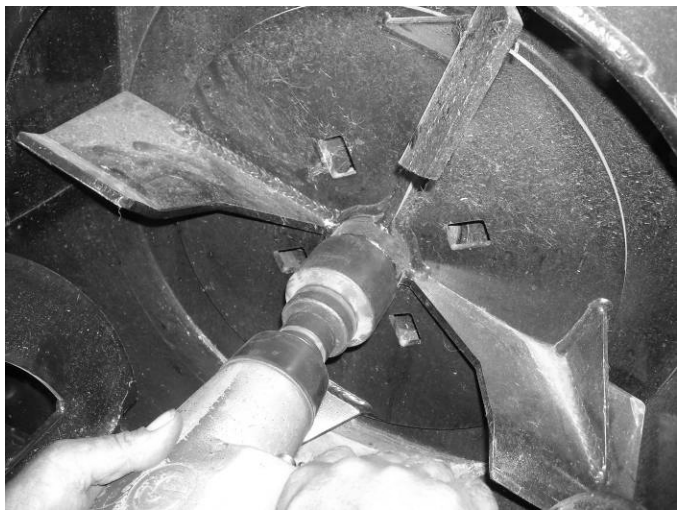
FAN REMOVAL AND INSTALLATION

FAN REMOVAL

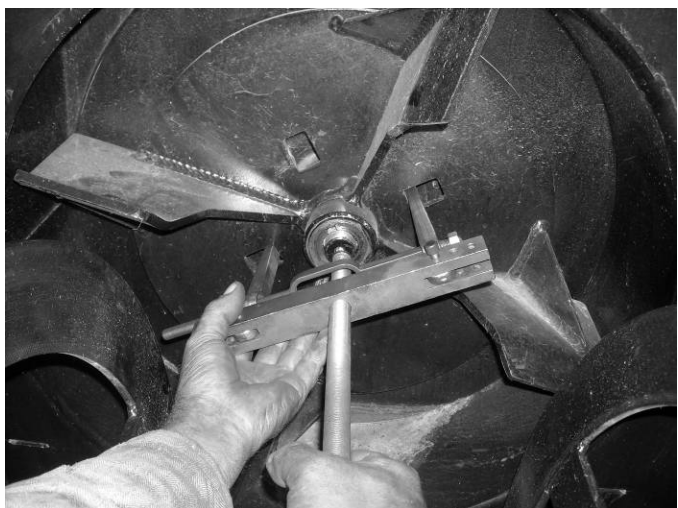


NOTE: If you do not use a pneumatic air wrench, a block of wood placed through the discharge chute and into the fan area will keep the fan from rotating when loosening or tightening the castle nut.

1. Remove the cotter key.



2. Remove castle nut.



3. Remove the fan from the tapered motor shaft with a pulley puller.
4. To install, use reverse procedure.



CAUTION: The castle nut must be torqued to a minimum of 250 ft-lbs. (400 ft-lbs on 2410XL model)

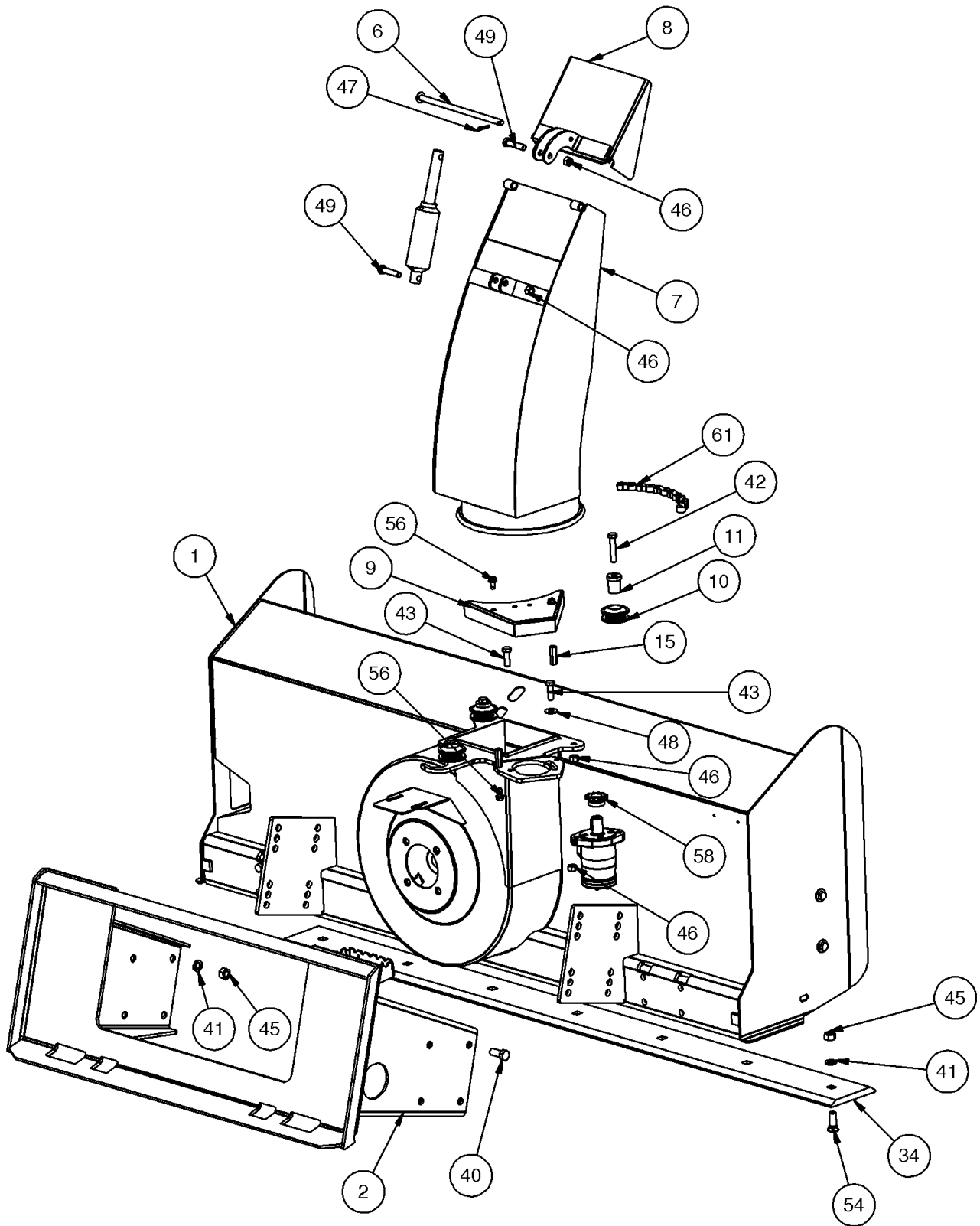
TROUBLESHOOTING

- Fan operates backwards
- Snow is not thrown very far or chute is plugging
- Chute functions will not operate
- Operate loader controls correctly (read loader operator's manual)
- Switch hydraulic couplers around
- Operate loader a slower ground speed
- Make sure loader is at full throttle
- Make sure High Flow mode is engaged if operating a high flow snowblower
- Check harness connections
- Check to make sure you are operating the correct loader control buttons (read loader operator's manual)
- Check power and ground lead if using generic pistol grip harness
- Check fuse if using pistol grip harness
- Isolate bad solenoid coils by swapping from one valve to the other and testing

2010 PARTS INFORMATION

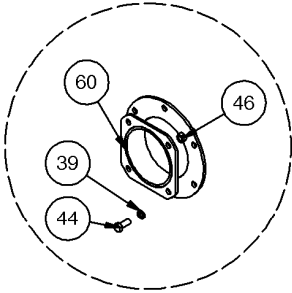
ITEM	PART NO.	DESCRIPTION	STOCK NO.	QTY
1	315800	BODY 2010 X 54 W/A		1
	315801	BODY 2010 X 60 W/A		1
	315802	BODY 2010 X 72 W/A		1
	315803	BODY 2010 X 78 W/A		1
	315804	BODY 2010 X 84 W/A		1
2	315812	MOUNT FRAME 2010/2410 W/A		1
6	315124	PIN DEFLECTOR W/A		1
7	315816	CHUTE 11" 2010/2410 W/A		1
8	315067	CHUTE DEFLECTOR		1
9	315049	SHIELD CHAIN ROTATE PAINTED		1
10	315020	ROLLER CHUTE		3
11	315155	ROLLER GREASABLE BUSHING		3
15	37820	COUPLING NUT 3/8 X 1-3/4 Z		2
34	300498	CUTTING EDGE B 56 DB		1
	312428	CUTTING EDGE B 62 DB		1
	318430	CUTTING EDGE B 74 DB		1
	300488	CUTTING EDGE B 80 DB		1
	318474	CUTTING EDGE B 86 DB		1
40	13309	BOLT HEX	5/8 X 1 1/2 NC GR 5	8
41	33630	WASHER LOCK	5/8	(14) 54", (14) 60" (15) 72"
				(15) 78" & (16) 84"
42	13213	BOLT HEX	1/2 X 2 1/2 NC GR 5	3
43	13209	BOLT HEX	1/2 X 1 1/2 NC GR 5	2
45	36114	NUT HEX	FULL 5/8 NC	(13) 54", (14) 60", (15) 72"
				(15) 78" & (16) 84"
46	37214	NUT HEX	LOCK 1/2 NC	7
47	65076	PIN COTTER 1/8 X 1		1
48	33010	WASHER FLAT	USS 7/16	1
49	13212	BOLT HEX	1/2 X 2 1/4 NC GR 5	2
54	22664	BOLT PLOW	5/8 X 1-3/4 NC GR5	(5) 54", (6) 60", (7) 72"
				(7) 78" & (8) 84"
56	19929	BOLT FLANGED	3/8 X 3/4 NC GR5	4
58	100539	SPROCKET 40B12 X 1 B		1
61	315089	CHAIN ROLLER NO 40 X 80P 2 C/L		1

2010 PARTS INFORMATION



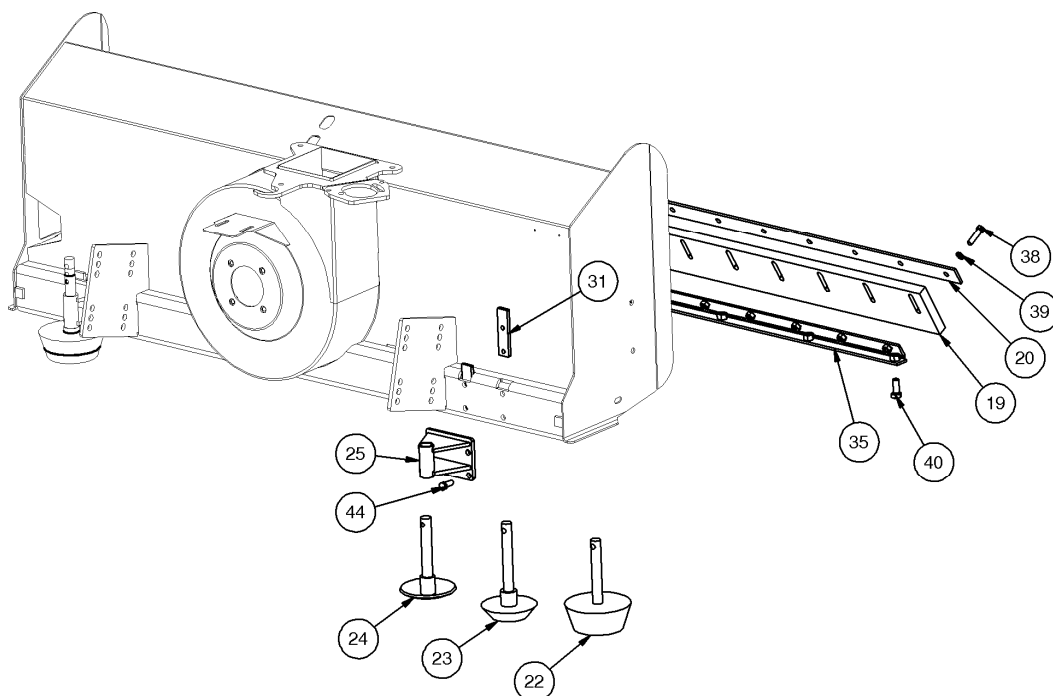
2410/2410XL PARTS INFORMATION

ITEM	PART NO.	DESCRIPTION	STOCK NO.	QTY
1	315805	BODY 2410 X 54 W/A	SPECIAL ORDER	1
	315806	BODY 2410 X 60 W/A	SPECIAL ORDER	1
	315807	BODY 2410 X 72 W/A		1
	315904	BODY 2410 X 78 W/A		1
	315808	BODY 2410 X 84 W/A		1
2	315812	MOUNT FRAME 2010/2410 W/A		1
6	315124	PIN DEFLECTOR W/A		1
7	315816	CHUTE 11" 2010/2410 W/A		1
8	315067	CHUTE DEFLECTOR		1
9	315049	SHIELD CHAIN ROTATE PAINTED		1
10	315020	ROLLER CHUTE		3
11	315155	ROLLER GREASABLE BUSHING		3
15	37820	COUPLING NUT 3/8 X 1-3/4 Z		2
34	300498	CUTTING EDGE B 56 DB		1
	312428	CUTTING EDGE B 62 DB		1
	318430	CUTTING EDGE B 74 DB		1
	300488	CUTTING EDGE B 80 DB		1
	318474	CUTTING EDGE B 86 DB		1
39	33626	WASHER LOCK	1/2	6 - (10) ON 2410XL SNOWBLOWER
40	13309	BOLT HEX - 5/8 X 1 1/2 NC GR 5	5/8 X 1 1/2 NC GR 5	8
41	33630	WASHER LOCK	5/8	(14) 54", (14) 60" (15) 72"
				(15) 78" & (16) 84"
42	13213	BOLT HEX	1/2 X 2 1/2 NC GR 5	3
43	13209	BOLT HEX	1/2 X 1 1/2 NC GR 5	2
44	13207	BOLT HEX	1/2 X 1 1/4 NC GR 5	8 - (10) ON 2410XL SNOWBLOWER
45	36114	NUT HEX	FULL 5/8 NC	(13) 54", (14) 60", (15) 72"
				(15) 78" & (16) 84"
46	37214	NUT HEX	LOCK 1/2 NC	7 - (11) ON 2410XL SNOWBLOWER
47	65076	PIN COTTER 1/8 X 1		1
48	33010	WASHER FLAT	USS 7/16	1
49	13212	BOLT HEX	1/2 X 2 1/4 NC GR 5	2
54	22664	BOLT PLOW	5/8 X 1-3/4 NC GR5	(5) 54", (6) 60", (7) 72"
				(7) 78" & (8) 84"
56	19929	BOLT FLANGED	3/8 X 3/4 NC GR5	4
58	100539	SPROCKET 40B12 X 1 B		1
59	315814	MOUNT ADAPTER STD W/A		1
60	315815	MOUNT ADAPTER XL W/A	XL SNOWBLOWERS ONLY	1
61	315089	CHAIN ROLLER NO 40 X 80P 2 C/L		1



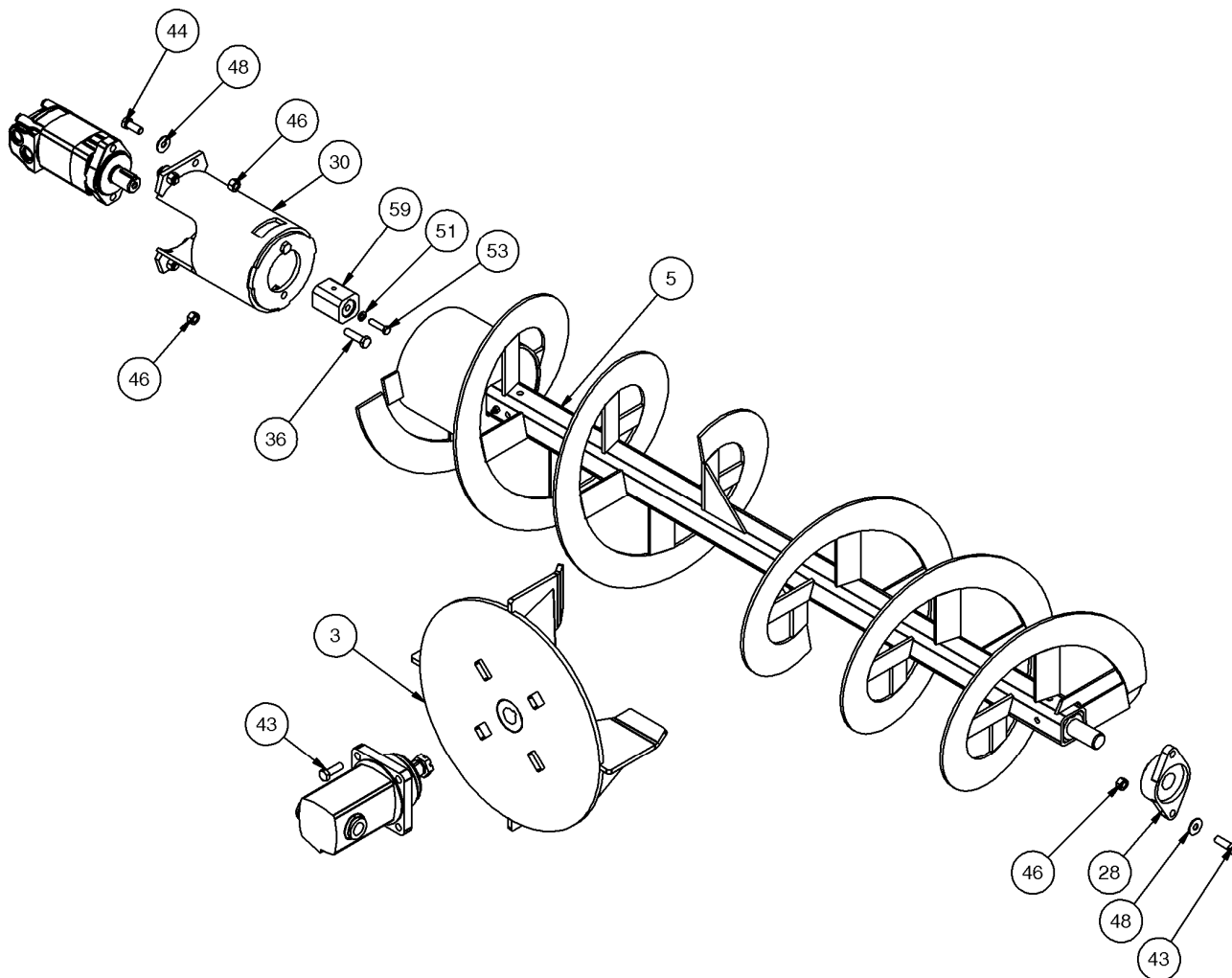
OPTIONAL PARTS INFORMATION

ITEM	PART NO.	DESCRIPTION	STOCK NO.	QTY
19	315889	CUTTING EDGE URETHANE 51	OPTIONAL URETHANE PKG	1
	315459	CUTTING EDGE URETHANE 57	OPTIONAL URETHANE PKG	1
	315460	CUTTING EDGE URETHANE 69	OPTIONAL URETHANE PKG	1
	315461	CUTTING EDGE URETHANE 75	OPTIONAL URETHANE PKG	1
	315462	CUTTING EDGE URETHANE 81	OPTIONAL URETHANE PKG	1
19	300602	CUTTING EDGE RUBBER 51 SB	OPTIONAL RUBBER PKG	1
	300603	CUTTING EDGE RUBBER 57 SB	OPTIONAL RUBBER PKG	1
	300604	CUTTING EDGE RUBBER 69 SB	OPTIONAL RUBBER PKG	1
	300605	CUTTING EDGE RUBBER 75 SB	OPTIONAL RUBBER PKG	1
	300606	CUTTING EDGE RUBBER 81 SB	OPTIONAL RUBBER PKG	1
20	315880	BACKING PLATE SB 51	WITH OPT. URE/RUB PKG	1
	315463	BACKING PLATE SB 57	WITH OPT. URE/RUB PKG	1
	315464	BACKING PLATE SB 69	WITH OPT. URE/RUB PKG	1
	315465	BACKING PLATE SB 75	WITH OPT. URE/RUB PKG	1
	315466	BACKING PLATE SB 81	WITH OPT. URE/RUB PKG	1
22	315467	SKID SHOE URETHANE	OPTIONAL SKID SHOE PKG	2
23	300086	SKID SHOE HEAVY-DUTY	OPTIONAL SKID SHOE PKG	2
24	100301	SKID SHOE	OPTIONAL SKID SHOE PKG	2
25	315813	MOUNT OPT SKID SHOE W/A	OPTIONAL SKID SHOE PKG	2
31	315868	PLATE BOLT THREADED	OPTIONAL SKID SHOE PKG	4
35	315874	BRACKET URETHANE 51 W/A	WITH OPT. URE/RUB PKG	1
	315875	BRACKET URETHANE 57 W/A	WITH OPT. URE/RUB PKG	1
	315876	BRACKET URETHANE 69 W/A	WITH OPT. URE/RUB PKG	1
	315877	BRACKET URETHANE 75 W/A	WITH OPT. URE/RUB PKG	1
	315878	BRACKET URETHANE 81 W/A	WITH OPT. URE/RUB PKG	1
38	13211	BOLT HEX - 1/2 X 2 NC GR 5	WITH OPT. URE/RUB PKG	(9) 54", (10) 60", (12) 72" (13) 78" & (14) 84"
39	33626	WASHER LOCK - 1/2	WITH OPT. URE/RUB PKG	(9) 54", (10) 60", (12) 72" (13) 78" & (14) 84"
40	13309	BOLT HEX - 5/8 X 1 1/2 NC GR 5	WITH OPT. URE/RUB PKG	(5) 54", (6) 60" (7) 72"
44	13207	BOLT HEX - 1/2 X 1 1/4 NC GR 5	OPTIONAL SKID SHOE PKG	8



DRIVE PARTS INFORMATION

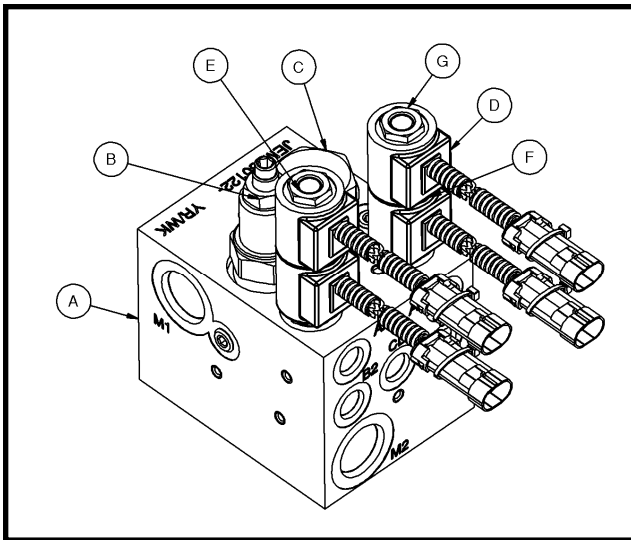
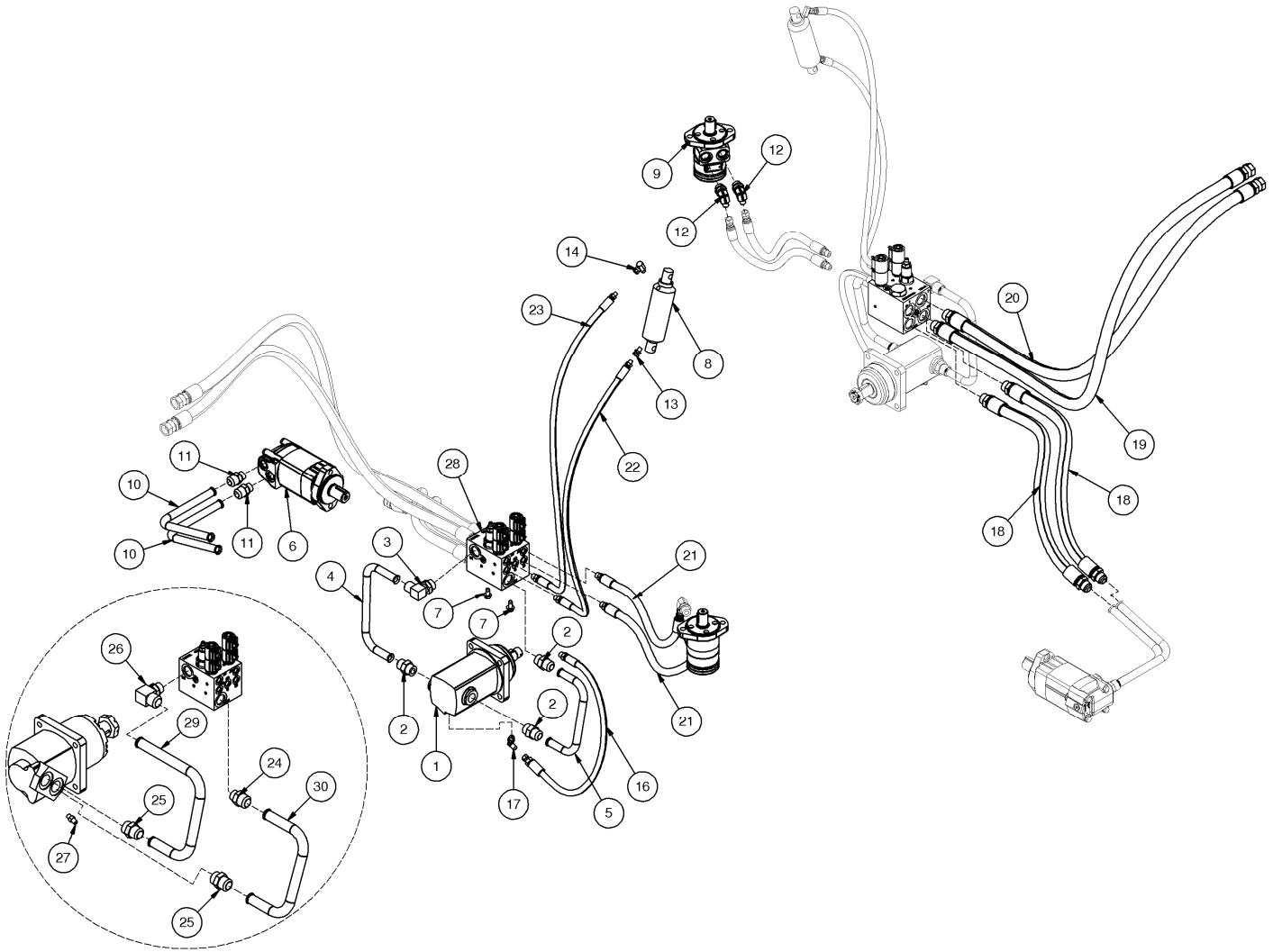
ITEM	PART NO.	DESCRIPTION	STOCK NO.	QTY
3	315809	FAN 20D 2010 W/A		1
	315810	FAN 24D 2410 W/A		1
	315811	FAN 24D 2410XL W/A		1
5	315819	AUGER 16D 2010 X 54 W/A		1
	315404	AUGER 16D 2010 X 60 W/A		1
	315405	AUGER 16D 2010 X 72 W/A		1
	315406	AUGER 16D 2010 X 78 W/A		1
	315447	AUGER 16D 2010 X 84 W/A		1
	315817	AUGER 18D 2410 X 54 W/A	SPECIAL ORDER	1
	315342	AUGER 18D 2410 X 60 W/A	SPECIAL ORDER	1
	315202	AUGER 18D 2410 X 72 W/A		1
	315907	AUGER 18D 2410 X 78 W/A		1
	315203	AUGER 18D 2410 X 84 W/A		1
28	100832	BRG 1.25 2-B FLG		1
30	310037	MOTOR CAN - PAINTED		1
36	13210	BOLT HEX	1/2 X 1 3/4 NC GR 5	2
43	13209	BOLT HEX	1/2 X 1 1/2 NC GR 5	6
44	13207	BOLT HEX	1/2 X 1 1/4 NC GR 5	4
46	37214	NUT HEX	LOCK 1/2 NC	8
48	33010	WASHER FLAT	USS 7/16	6
51	103880	WASHER LOCK	3/8	1
53	103879	BOLT HEX	3/8 X 1 1/2 NC GR 5	1
59	103891	DRIVE BLOCK ASM		1



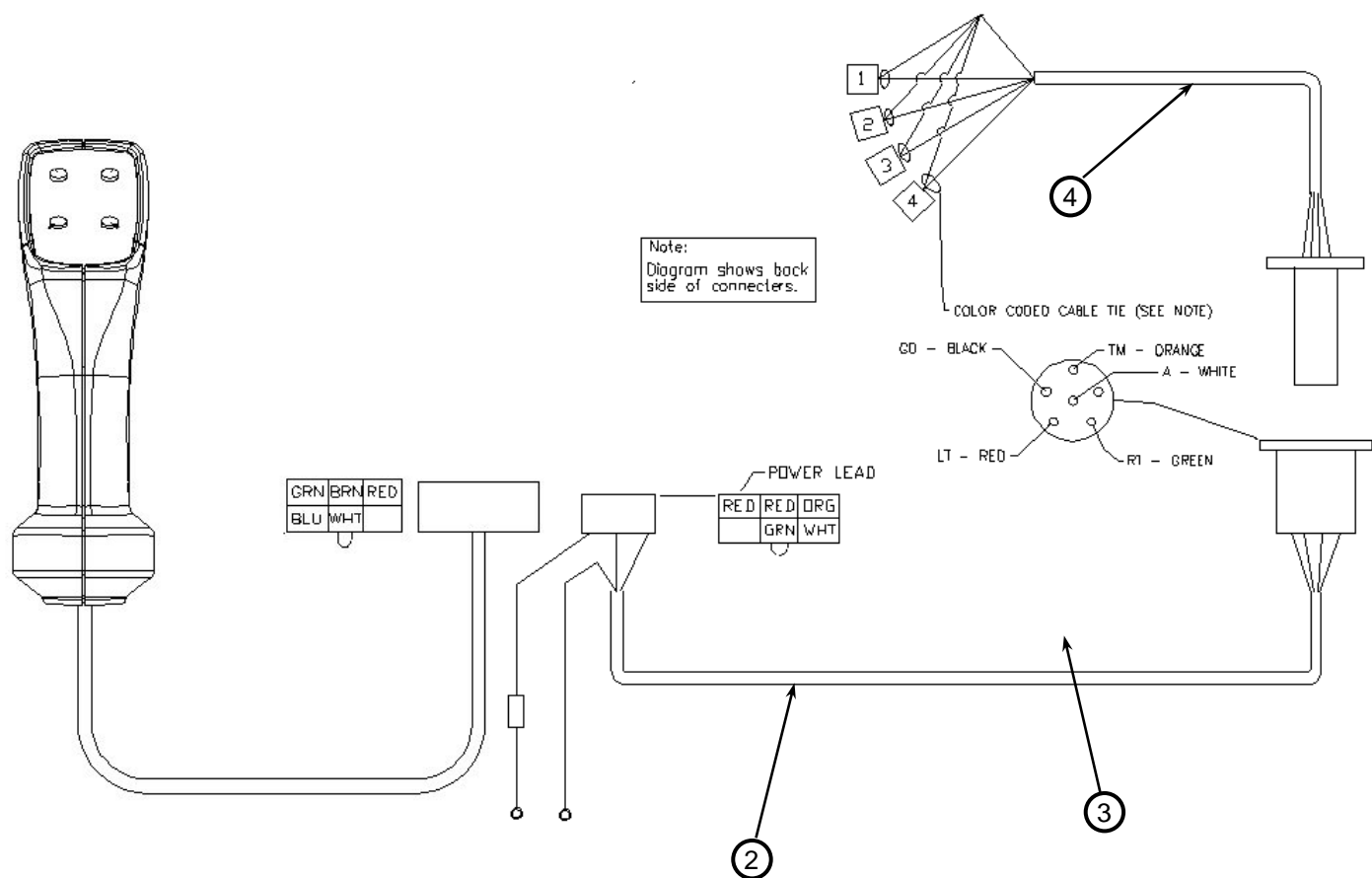
HYDRAULIC PARTS INFORMATION

ITEM	PART NO.	DESCRIPTION	STOCK NO.	QTY
1	320078	MOTOR HYD - 4.9 CID	2010 FAN MOTOR	1
	201931	MOTOR HYD - 6.2 CID	2010 FAN MOTOR	1
	200105	MOTOR HYD - 8.0 CID	2010 FAN MOTOR	1
	103521	MOTOR HYD - 9.6 CID	2410 FAN MOTOR	1
	200104	MOTOR HYD - 11.9 CID	2410 FAN MOTOR	1
	320085	MOTOR HYD - 14.9 CID	2410 FAN MOTOR	1
	200319	MOTOR HYD - 11.9 CID	2410 XL FAN MOTOR	1
	200168	MOTOR HYD - 15 CID	2410 XL FAN MOTOR	1
2	103431	ADPT STR 12MB-12MJ		3
3	300262	ADPT ELB 12MB-12MJ-90		1
4	315822	TUBELINE FAN LH		1
5	315823	TUBELINE FAN RH		1
6	320083	MOTOR HYD - 14.9 CID	2010 AUGER MOTOR	1
	103396	MOTOR HYD - 24.0 CID	2010 & 2410 AUGER MOTOR	1
	320077	MOTOR HYD - 29.8 CID	2410 & 2410 XL AUGER MOTOR	1
7	19929	BOLT 3/8 X 3/4 NC FLG GR 5		2
8	103273	CYLINDER 2 X 4	CHUTE DEFLECTION	1
9	103329	MOTOR HYD - 2.8 CID	CHUTE ROTATION	1
10	315424	TUBELINE AUGER PRESSURE		2
11	202113	ADPT STR 10MB-12MJ		2
12	103330	ADPT ELB 10MB-6MJ-90		2
13	103318	ADPT STR 2MP-2FPX		1
14	103284	ADPT ELB 2MP-2FPX-90		1
16	315136	HOSE 1/4 X 22 6MB-4FJX	CASE DRAIN	1
17	103497	ADPT ELB 4MB-4MJ-90	CASE DRAIN (NOT USED ON XL)	1
18	315451	HOSE 3/4 X 24.5 12MB-12MJ	FOR 60" SNOWBLOWER	2
	315452	HOSE 3/4 X 30.5 12MB-12MJ	FOR 72" SNOWBLOWER	2
	315453	HOSE 3/4 X 33.5 12MB-12MJ	FOR 78" SNOWBLOWER	2
	315454	HOSE 3/4 X 36.5 12MB-12MJ	FOR 84" SNOWBLOWER	2
19	315143	HOSE 3/4 X 72 12FJX-12MB	LEAD RETURN	1
20	315091	HOSE 3/4 X 72 12FJX-12MB	LEAD PRESSURE	1
21	315092	HOSE 3/8 X 21 6MB-6FJX	CHUTE ROTATION	2
22	315094	HOSE 1/4 X 46 6MB-2MP	CHUTE DEFLECTION	1
23	315093	HOSE 1/4 X 53 6MB-2MP	CHUTE DEFLECTION	1
24	201526	ADPT STR 12MB-16MJ	2410 XL SNOWBLOWER ONLY	1
25	201528	ADPT STR 16MB-16MJ	2410 XL SNOWBLOWER ONLY	2
26	300499	ADPT ELB 12MB-16MJ-90	2410 XL SNOWBLOWER ONLY	1
27	203212	ADPT STR 4MB-4MJ (FOR CD)	2410 XL SNOWBLOWER ONLY	1
28	315068	VALVE ASSM		1
A	320107	BLOCK		1
B	200046	PRESSURE RELIEF VALVE		1
C	200045	FLOW CONTROL VALVE		1
D	320096	COIL – assembly		4
E	200042	DIRECTIONAL VALVE		2
F	200041	WASHER		2
G	200039	NUT		2
29	315824	TUBELINE FAN PRESSURE XL	2410 XL SNOWBLOWER ONLY	1
30	315825	TUBELINE FAN RETURN XL	2410 XL SNOWBLOWER ONLY	1

HYDRAULIC PARTS INFORMATION



WIRE HARNESS PARTS INFORMATION



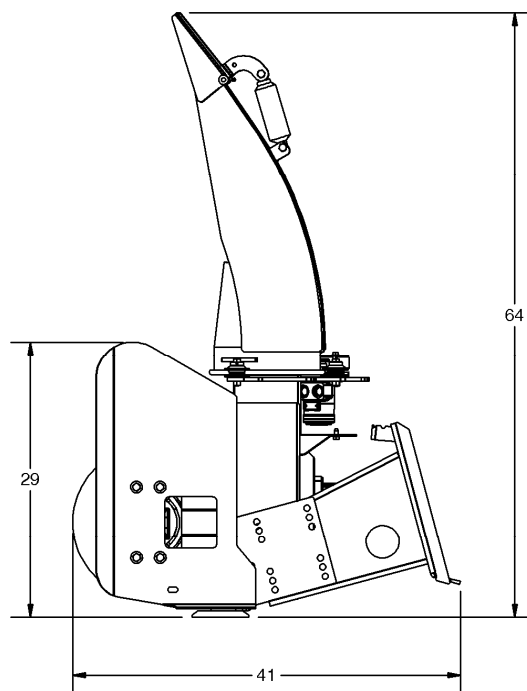
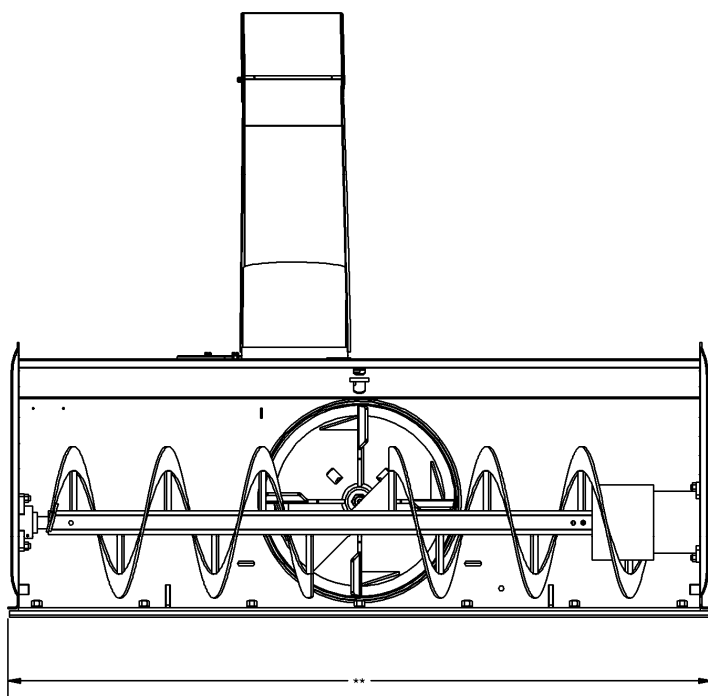
REF.	PART NO.	DESCRIPTION	QTY.
	315128	COMPLETE HARNESS – generic (shown).....	1
1	315110	PISTOL GRIP – handle assembly	1
2	315126	LOADER HARNESS	1
3	300247	RECEPTACLE BRACKET (not shown).....	1
4	315127	BLOWER HARNESS	1

Optional Harnesses (not shown):

320256	14-PIN UNIVERSAL – for Bobcat® Loaders
320233	14-PIN UNIVERSAL – for Case® & New Holland® Loaders
320084	14-PIN UNIVERSAL – for John Deere® Loaders
200008	8-PIN – for Caterpillar® A series Loaders
315153	8-PIN – for ASV® Loaders
315339	8-PIN – for Caterpillar® B series

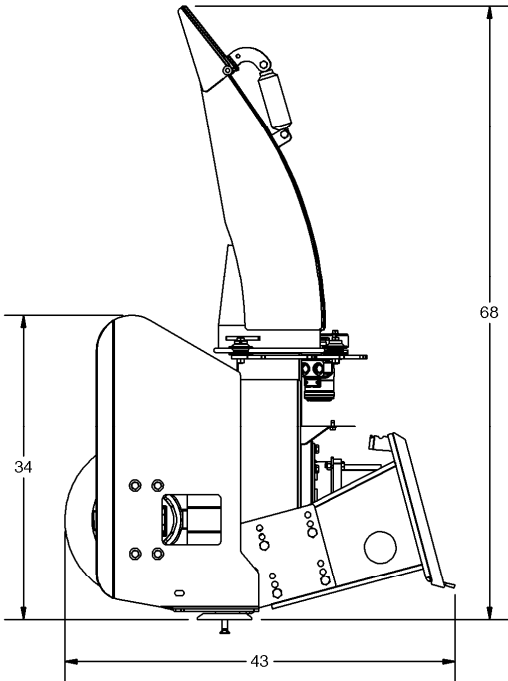
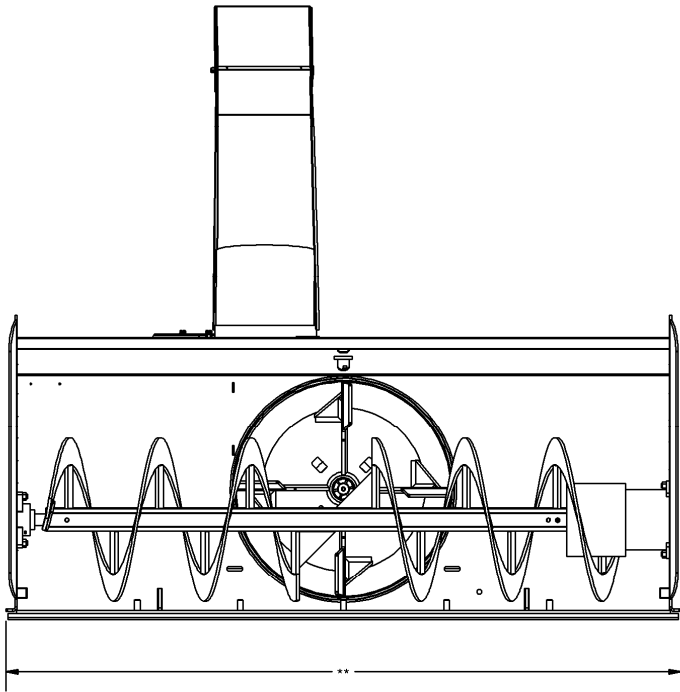
GENERAL SPECIFICATIONS

Model	2010 x 61"	2010 x 73"	2010 x 79"	2010 x 85"
Working Width	61"	73"	79"	85"
Height	29"	29"	29"	29"
Fan Diameter	20" 4-blade	20" 4-blade	20" 4-blade	20" 4-blade
Auger Diameter	16" open flighting	16" open flighting	16" open flighting	16" open flighting
Auger Shear Protection	Hydraulic relief valve	Hydraulic relief valve	Hydraulic relief valve	Hydraulic relief valve
Chute Rotation	Hydraulic 270°	Hydraulic 270°	Hydraulic 270°	Hydraulic 270°
Cutting Edge	reversible 5/8" x 6"	reversible 5/8" x 6"	reversible 5/8" x 6"	reversible 5/8" x 6"
Mounting Plate	Universal	Universal	Universal	Universal
Casting Distance	up to 30'	up to 30'	up to 30'	up to 30'
Flow Required	11 - 25 GPM	11 - 25 GPM	11 - 25 GPM	11 - 25 GPM
Shipping Weight	Approx. 770 lbs.	Approx. 830 lbs.	Approx. 860 lbs.	Approx. 890 lbs.



GENERAL SPECIFICATIONS

Model	2410 x 73"	2410 x 79"	2410 x 85"
Working Width	73"	79"	85"
Height	36"	36"	36"
Fan Diameter	24" 4-blade	24" 4-blade	24" 4-blade
Auger Diameter	18" open flighting	18" open flighting	18" open flighting
Auger Shear Protection	Hydraulic relief valve	Hydraulic relief valve	Hydraulic relief valve
Chute Rotation	Hydraulic 270°	Hydraulic 270°	Hydraulic 270°
Cutting Edge	reversible 5/8" x 6"	reversible 5/8" x 6"	reversible 5/8" x 6"
Mounting Plate	Universal	Universal	Universal
Casting Distance	up to 40'	up to 40'	up to 40'
Flow Required	24-42 GPM	24-42 GPM	24-42 GPM
Shipping Weight	Approx. 940 lbs. (975 for XL)	Approx. 970 lbs. (1000 for XL)	Approx. 1000 lbs. (1035 for XL)





LIMITED WARRANTY

Erskine Attachments LLC warrants each new machine manufactured by us to be free from defects in material and workmanship for a period of twelve (12) months from date of delivery to the original purchaser.

Our obligation under this warranty is to replace free of charge, at our factory or authorized dealership, any part proven defective within the stated warranty time limit.

All parts must be returned freight prepaid and adequately packaged to prevent damage in transit.

This warranty does not cover:

1. New products which have been operated in excess of rated capacities or negligence
2. Misuse, abuse, accidents or damage due to improperly routed hoses
3. Machines which have been altered, modified or repaired in any manner not authorized by our company
4. Previously owned equipment
5. Any ground engaging tools in which natural wear is involved, i.e. tooth tips, cutting teeth, etc
6. Normal maintenance
7. Fork tines
8. Hydraulic motors that have been disassembled in any manor

In no event will the Sales Representative, Dealership, Erskine Attachments LLC, or any other company affiliated with it or them be liable for incidental or consequential damages or injuries, including but not limited to the loss of profit, rental or substitute equipment or other commercial loss. Purchaser's sole and exclusive remedy being as provided here in above.

Erskine Attachments LLC must receive immediate notification of defect and no allowance will be made for repairs without our consent or approval.

This warranty is in lieu of all other warranties, express or implied by law or otherwise, and there is no warranty of merchantability or fitness purpose.

No agent, employee, or representative of Erskine Attachments LLC has any authority to bind Erskine Attachments LLC to any warranty except as specifically set forth herein. Any of these limitations excluded by local law shall be deemed deleted from this warranty; all other terms apply.

This warranty may not be enlarged or modified in any manner except in writing signed by an executive officer of Erskine Attachments LLC to improve its products whenever it is possible and practical to do so. Erskine Attachments LLC reserves the right to make changes and or add improvements at any time without incurring any obligation to make such changes or add such improvements to products previously sold.

Erskine Attachments LLC
P.O. Box 1083 Alexandria, MN 56308
Phone (218) 687-4045 Fax (218) 687-5293



P/N 300518 Date Printed: 3/12/2013
Erskine Attachments LLC
Erskine, MN 56535

Printed in U.S.A.