

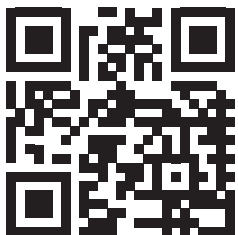


WEEDOO SICKLE BAR MOWER

Current as of 3/4/2020



PARTS LISTING WITH MOUNTING AND OPERATING INSTRUCTIONS



Tiger Corporation
3301 N. Louise Ave.
Sioux Falls, SD 57107
1-800-843-6849
1-605-336-7900
www.tigermowers.com

06090005

TO THE OWNER / OPERATOR / DEALER

All implements with moving parts are potentially hazardous. There is no substitute for a cautious, safe-minded operator who recognizes the potential hazards and follows reasonable safety practices. The manufacturer has designed this implement to be used with all its safety equipment properly attached to minimize the chance of accidents.

BEFORE YOU START!! Read the safety messages on the implement and shown in this manual. Observe the rules of safety and use common sense!

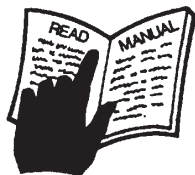
READ AND UNDERSTAND THIS MANUAL! Non-English speaking operators will need to GET THE MANUAL TRANSLATED as needed!



DANGER

FAILING TO FOLLOW SAFETY MESSAGES AND OPERATING INSTRUCTIONS CAN CAUSE SERIOUS BODILY INJURY OR EVEN DEATH TO OPERATOR AND OTHERS IN THE AREA.

1.



2. NO RIDERS. NO CHILDREN OPERATORS.



3. USE SAFETY SHOES, HARD HAT, SAFETY GLASSES, SEAT BELTS, ROPS & OPS



4. BLOCK UP SECURELY BEFORE WORKING UNDER.



1. Study and understand Operator's Manuals, Safety Decals, and Instructional Decals for tractor and implement to prevent misuse, abuse, and accidents. Practice before operating in a confined area or near passersby.

- Learn how to stop engine suddenly in an emergency. Be alert for passersby and especially children

2. Allow no children on or near folding mower or tractor. Allow no riders on tractor or implement. Falling off may cause serious injury or death from being run over by tractor or mower or contact with rotating blades.

3. Operate only with tractor having Roll-Over Protective Structure (ROPS) and with seat belt securely fastened to prevent injury and possible death from falling off or tractor overturn.

- Personal Protective Equipment such as Hard Hat, Safety Glasses, Safety Shoes, & Ear Plugs are recommended.

4. Block up or support raised machine and all lifted components securely before putting hands or feet under or working underneath any lifted component to prevent crushing injury or death from sudden dropping or inadvertent operation of controls. Make certain area is clear before lowering or folding

5. Before transporting, put Lift Lever in detent or full-lift position. Install Transport Safety Devices securely on folding mowers. Put Booms securely in Transport Rest.

- Folding and Boom Mowers have raised center of gravity. Slow down when turning and on hillsides.

6. Make certain that SMV sign, warning lights, and reflectors are clearly visible. Follow local traffic codes.

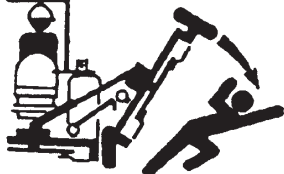
7. Never operate with Cutting Head or Folding Section raised if passersby, bystanders, or traffic are in the area to reduce possibility of injury or death from objects thrown by Blades under Guards or mower structure.

8. Before dismounting, secure implement in transport position or lower to ground.

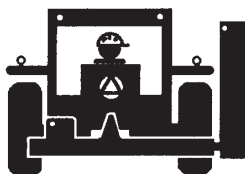
- Put tractor in park or set brake, disengage PTO, stop engine, remove key, and wait until noise of rotation has ceased to prevent crushing by entanglement in rotating parts which could cause injury or death.

- Never mount or dismount a moving vehicle. Crushing from runover may cause serious injury or death.

5. TRANSPORT SAFELY, LOCK UP.



6. USE SMV, LIGHTS, & REFLECTORS.



7. DO NOT OPERATE WITH CUTTER OR WING RAISED.



8. DO NOT MOUNT OR DISMOUNT WHILE MOVING.



02967827

Warranty Information: Read and understand the complete Warranty Statement found in this manual. Fill out the Warranty Registration form in full and return it within 90 days. Make certain the Serial Number of the machine is recorded on the Warranty Card, and form that you retain.

FORWARD

This manual contains information about many features of the Tiger mowing and roadside maintenance equipment. Some of these include: Safety precautions, Assembly instructions, Operations, Maintenance and Parts. This manual will also assist you in the proper break-in, daily care, and troubleshooting of your new mower.

We recommend that you read carefully the entire manual before operating the unit. Also, time spent in becoming fully acquainted with its performance features, adjustments, and maintenance schedules will be repaid in a long and satisfactory life of the equipment.

Troubleshooting - Please, before you call, help us to help you!

Please look at the equipment to observe what is happening, then:

- Classify the problem
 - Hydraulic, electrical or mechanical - Read the troubleshooting section
 - Boat or vehicle - Contact boat or vehicle dealer
- If unable to correct the problem yourself, contact your local Tiger Dealer after gathering:
 - Machine model _____
 - Serial number _____
 - Dealer name _____
 - Detailed information about the problem including results of troubleshooting

Attention Owner / Operator / Dealer: It is your obligation to read, and understand, the warranty information section located at the back of this manual denoting that the purchaser understands the safety issues relating to this machine and has received and will read a copy of this manual.

If at any time, you have a service problem with your Tiger mower, Contact your local dealer for service and parts needed.

MANUFACTURED BY:

Tiger Corporation

3301 N. Louise Ave.

Sioux Falls, SD 57107

1-800-843-6849

1-605-336-7900

www.tigermowers.com

DISTRIBUTED BY:

1-_____-_____-_____

1-_____-_____-_____

TABLE OF CONTENTS

ASSEMBLY / MOUNTING SECTION_____	2
OPERATION SECTION_____	3
MAINTENANCE SECTION_____	4
PARTS SECTION_____	5
WARRANTY INFORMATION_____	7



1012

This symbol means:

CAUTION – YOUR SAFETY IS AT RISK!

When you see this symbol, read and follow the associated instructions carefully or personal injury or damage may result.

Tiger is a registered trademark.



SAFETY SECTION

Safety Section 1-1

SAFETY

General Safety Instructions and Practices

A careful operator is the best operator. Safety is of primary importance to the manufacturer and should be to the owner/operator. Most accidents can be avoided by being aware of your equipment, your surroundings, and observing certain precautions. The first section of this manual includes a list of Safety Messages that, if followed, will help protect the operator and bystanders from injury or death. Read and understand these Safety Messages before assembling, operating or servicing this Implement. This equipment should only be operated by those persons who have read the manual, who are responsible and trained, and who know how to do so responsibly.



The Safety Alert Symbol combined with a Signal Word, as seen below, is used throughout this manual and on decals which are attached to the equipment. The Safety Alert Symbol means: "ATTENTION! BECOME ALERT! YOUR SAFETY IS INVOLVED!" The Symbol and Signal Word are intended to warn the owner/operator of impending hazards and the degree of possible injury faced when operating this equipment.

Practice all usual and customary safe working precautions and above all---remember safety is up to YOU. Only YOU can prevent serious injury or death from unsafe practices.



Indicates an imminently hazardous situation that, if not avoided, WILL result in DEATH OR VERY SERIOUS INJURY.



Indicates an imminently hazardous situation that, if not avoided, COULD result in DEATH OR SERIOUS INJURY.



Indicates an imminently hazardous situation that, if not avoided, MAY result in MINOR INJURY.



Identifies special instructions or procedures that, if not strictly observed, could result in damage to, or destruction of the machine, attachments or the environment.

NOTE: *Identifies points of particular interest for more efficient and convenient operation or repair.* (SG-1)

READ, UNDERSTAND, and FOLLOW the following Safety Messages. Serious injury or death may occur unless care is taken to follow the warnings and instructions stated in the Safety Messages. Always use good common sense to avoid hazards. (SG-2)



Si no lee ingles, pida ayuda a alguien que si lo lea para que le traduzca las medidas de seguridad. (SG-3)

¡ LEA EL INSTRUCTIVO!



Always maintain the safety signs in good readable condition. If the safety signs are missing, damaged, or unreadable, obtain and install replacement safety signs immediately. (SG-5)

SAFETY



Never allow children or other persons to ride on the Boat or Implement. Falling off can result in serious injury or death. (SG-10W)



Never allow children to operate, ride on, play on or come close to the boat or Implement. (SG-11W)



The operator and all support personnel should wear Safety flotation Vests, hard hats, safety shoes, safety glasses, and proper hearing protection at all times for protection from injury including injury from items that may be cut or thrown by the equipment. (SG-16W)



PROLONGED EXPOSURE TO LOUD NOISE MAY CAUSE PERMANENT HEARING LOSS! Boats with or without an Implement attached can often be noisy enough to cause permanent hearing loss. We recommend that you always wear hearing protection if the noise in the Operator's position exceeds 80db. Noise over 85db over an extended period of time will cause severe hearing loss. Noise over 90db adjacent to the Operator over an extended period of time will cause permanent or total hearing loss. **NOTE:** *Hearing loss from loud noise [from Boats, chain saws, radios, and other such sources close to the ear] is cumulative over a lifetime without hope of natural recovery.* (SG-17W)



Always read carefully and comply fully with the manufacturer's instructions when handling oil, solvents, cleansers, and any other chemical agent. (SG-22)



Never allow children to play on or around Boat or Implement. Children can slip or fall off the Equipment and be injured or killed. Children can cause the Boat and Implement to shift or fall crushing themselves or others. (SG-25W)



NEVER use drugs or alcohol immediately before or while operating the Boat and Implement. Drugs and alcohol will affect an operator's alertness and coordination and therefore affect the operator's ability to operate the equipment safely. Before operating the Boat or Implement, an operator on prescription or over-the-counter medication must consult a medical professional regarding any side effects of the medication that would hinder their ability to operate the Equipment safely. NEVER knowingly allow anyone to operate this equipment when their alertness or coordination is impaired. Serious injury or death to the operator or others could result if the operator is under the influence of drugs or alcohol. (SG-27W)



SAFETY

SAFETY



WARNING

Engine Exhaust, some of its constituents, and certain vehicle components contain or emit chemicals known to the state of California to cause cancer and birth defects or other reproductive harm. (SG-30)



WARNING

Battery posts, terminals and related accessories contain lead and lead compounds, chemicals known to the state of California to cause cancer, birth defects or other reproductive harm. (SG-31)



DANGER

There are obvious and hidden potential hazards in the operation of this Mower. REMEMBER! This machine is often operated in heavy brush and in heavy weeds. The Blades of this Mower can throw objects if shields are not properly installed and maintained. Serious injury or even death may occur unless care is taken to insure the safety of the operator, bystanders, or passersby in the area. Do not operate this machine with anyone in the immediate area. Stop mowing if anyone is within 20 feet of mower. (SGM-02W)

Operator Safety Instructions and Practices



DANGER

BEFORE leaving the operator's seat, always secure the boom and mower head, secure the boat to a dock, stop the engine, and wait for all moving parts to stop. Never dismount a boat that is moving or while the engine is running. Operate the boat and boom controls from the operator's seat only. (SG-9W)



WARNING

Do not mount or dismount the boat while the boat is moving. Mount the boat only when the boat is secured to a dock and all moving parts are completely stopped. (SG-12W)



DANGER

Start the engine only when properly seated in the boat seat. Starting a boat in gear can result in injury or death. Read the boat operators manual for proper starting instructions. (SG-13W)



WARNING

Do not operate this Equipment with hydraulic oil or fuel leaking. Oil and fuel are explosive and their presence could present a hazard. Do not check for leaks with your hand! High-pressure oil streams from breaks in the line could penetrate the skin and cause tissue damage including gangrene. To check for a hose leak, SHUT the unit ENGINE OFF and remove all hydraulic pressure. Wear oil impenetrable gloves, safety glasses and use Cardboard to check for evidence of oil leaks. If you suspect a leak, REMOVE the HOSE and have it tested at a Dealer. If oil does penetrate the skin, have the injury treated immediately by a physician knowledgeable and skilled in this procedure. (SG-15)



SAFETY



Never run the Boat engine in a closed building or without adequate ventilation. The exhaust fumes can be hazardous to your health. (SG-23W)



KEEP AWAY FROM BLADES & ROTATING ELEMENTS to prevent entanglement and possible serious injury or death. (SG-24W)



Do not exceed the rated engine speed for the Implement. Excessive speeds can cause Implement damage or blade failures resulting in serious injury or death. (SG-26W)



Operate the Boat and/or Implement controls only while properly seated in the operator's seat. Inadvertent movement of the Boat or Implement may cause serious injury or death. (SG-29W)



Prolonged operation may cause operator boredom and fatigue affecting safe operation. Take scheduled work breaks to help prevent these potentially impaired operating conditions. Never operate the Implement and Boat in a fatigued or bored mental state which impairs proper and safe operation. (SG-32W)



DO NOT operate this Implement on a boat that is not properly maintained. Should a mechanical or boat control failure occur while operating, immediately shut down the boat and perform repairs before resuming operation. Serious injury and possible death could occur from not maintaining this Implement and boat in good operating condition. (SG-36W)



Avoid contact with hot surfaces of the engine or muffler. Use gloves and eye protection when servicing hot components. Contact with a hot surface or fluid can cause serious injury from burns or scalding. (SG-38)



Do Not operate this equipment in areas where insects such as bees, or animals such as snakes, alligators that can attack you and/or cause you to lose control of the equipment. If you must enter in such areas, wear suitable clothing including head, face, and hand protection to shield you from the insects and animals. Attacking insects and animals can cause you to lose control of the boat, which can result in serious injury or death to you or bystanders. Never dismount a moving boat. (SG-40W)



Mow only in conditions where you have clear visibility in daylight or with adequate artificial lighting. Never mow in darkness or foggy conditions where you cannot clearly see at least 300 feet (90 m) in front and to the sides of the boat and mower. Make sure that you can clearly see and identify passersby, overhead obstructions, power lines, debris and foreign objects. If you are unable to clearly see these types of items discontinue mowing. (SGM-1W)

SAFETY

SAFETY

WARNING

Do not put hands or feet near the cutter bar. Blade contact can result in serious injury. Stay away until all motion has stopped and the mower is securely blocked up. (SSM-1)



WARNING

Maintain adequate boat stability to prevent lateral instability and possible tip-over which could result in serious bodily injury or even death. Add additional ballast and operate at slow speeds to maintain adequate stability at all times. (SSM-2W)

DANGER

The rotating parts of this machine have been designed and tested for rugged use. However, the blades and components could fail upon impact with heavy, solid objects such as metal guard rails and concrete structures. Such impact could cause the broken objects to be thrown outward at very high velocities. To reduce the possibility of property damage, serious injury, or even death, never allow the cutting blades or boom to contact such obstacles. (SGM-4W)

WARNING

Extreme care should be taken when operating near fixed obstructions such as underwater trees, posts or concrete fixtures. Inspect the area before mowing. Any objects that cannot be removed must be clearly marked and carefully avoided by the operator. Stop mowing immediately if blades strike a foreign object. Repair all damage and make certain rotor or blade carrier is balanced before resuming mowing. (SGM-05W)

WARNING

Many varied objects, such as wire, cable, rope, or chains, can become entangled in the operating parts of the mower head. These items could become entangled in the moving parts of the boom and mower head causing the boat to tip over. Such a situation is extremely hazardous and could result in serious injury or even death. Inspect the cutting area for such objects before mowing. Remove any like object from the site. Never allow the mower blades or boom to contact such items. (SGM-06W)

WARNING

Mow at the speed that you can safely operate and control the boat and mower. The correct mowing speed depends on water condition and grass type, density, and height of cut. Normal ground speed range is from 2 to 5 mph(3-8 kph). Use slow mowing speeds when operating on or near obstructions, power lines, or when debris and foreign objects are to be avoided. (SGM-07W)

WARNING

Do not mow in reverse direction. Never mow an area that you have not inspected and removed debris or foreign material. (SGM-08W)

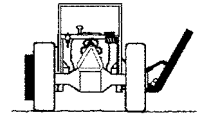
SAFETY

WARNING

Do not operate Mower if excessive vibration exists. In the case of extreme vibration, shut down the Mower and the engine and wait until all motion has stopped. Inspect the Mower to determine the source of the vibration. If any Mower blades are missing or damaged replace them immediately. Operating the Mower with excessive vibration can result in component failure and broken objects could be thrown outward. To reduce the possibility of property damage and personal injury, never allow the Mower to be operated with excessive vibration. (SSM-3W)

WARNING

Never leave the mower unattended while the head is in the raised position. The mower could fall causing serious injury to anyone who might inadvertently be under the mower. (SSM-4)



DANGER

Always keep a careful lookout and use extreme care when working around utility and municipal obstructions. Never allow the Mower to contact any utility, municipal, or other type structure. Clearly mark all mowing obstructions and consult local utility providers for a safe code of operation. (SPU-5)

DANGER

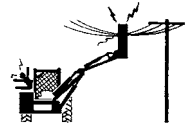
Use extreme caution when raising the Mower above ground level. Stop the Blades from Moving when the Mower is raised and passersby are within 20 yards. Raising the Mower exposes the Cutting Blades which creates potentially serious hazards by contact with the Blades. (SPU-1W)

WARNING

Be sure you have adequate knowledge of the property you will be working on. Take time to make yourself aware of any area underwater or underground lines or cables. Contact with buried lines or cable could result in serious injury or death. (STL-1)

DANGER

Always keep a careful lookout and use extreme care when working around overhead obstructions. Never allow the Mower head or boom within 10 feet of any power line. When working close to overhead power lines consult your electric company for a safe code of operation. (SBM-7)



Connecting or Disconnecting Implement Safety Instructions and Practices

DANGER

Never operate the boat or Implement until you have read and completely understand this Manual, the boat Operator's Manual, and each of the Safety Messages found in the Manual or on the boat and Implement. Learn how to stop the engine suddenly in an emergency. Never allow inexperienced or untrained personnel to operate the boat or Implement without supervision. Make sure the operator has fully read and understood the manuals prior to operation. (SG-4W)



SAFETY

SAFETY

Maintenance and Service Safety Instructions and Practices



Do not modify or alter this Implement. Do not permit anyone to modify or alter this Implement, any of its components or any Implement function. (SG-8)



Never work under the Implement, the framework, or any lifted component unless the Implement is securely supported or blocked up to prevent sudden or inadvertent falling which could cause serious injury or even death. (SG-14W)



Never attempt to lubricate, adjust, or remove material from the Implement while the boat is in motion or while the engine is running. (SG-20W)



Periodically inspect all moving parts for wear and replace when necessary with authorized service parts. Look for loose fasteners, worn or broken parts, and leaky or loose fittings. Make sure all pins are secured with roll pins or capscrews with nylock nuts. Serious injury may occur from not maintaining this machine in good working order. (SG-21W)



Do Not fill fuel tank while engine is running. Refuel only after engine has cooled down. If fuel is spilled, move machine away from the area of the spill and avoid creating any source of ignition until the gasoline has evaporated. (SG-28)



Use extreme caution when getting onto the boat or Implement to perform repairs, maintenance and when removing accumulated material. Secure the boat to the dock or remove it from the water before conducting any service and maintenance on the boat or implement. Only stand on solid flat surfaces to ensure good footing. Use a ladder or raised stand to access high spots which cannot be reached from ground level. Slipping and falling can cause serious injury or death. (SG-33W)



Avoid contact with hot surfaces including hydraulic oil tanks, pumps, motors, valves and hose connections. Relieve hydraulic pressure before performing maintenance or repairs. Use gloves and eye protection when servicing hot components. Contact with a hot surface or fluid can cause serious injury from burns or scalding. (SG-34)



Perform service, repairs and lubrication according to the maintenance section. Ensure the unit is properly lubricated as specified in the lubrication schedule and all bolts and nuts are properly torqued. Failure to properly service, repair and maintain this Implement in good operating condition could cause component failure and possible serious injury or even death. (SG-35)

SAFETY



For your protection while operating or servicing equipment, wear relatively tight and belted clothing to avoid entanglement in moving parts. Tie up and protect long hair that could become entangled in machinery. Remove all jewelry including necklaces, rings and watches which can get caught in machinery or on corners or edges of the equipment. Serious injury can result from entanglement with the machinery. (SG-42)



All Safety Shields, Guards and other safety devices including (but not limited to) - Deflectors, Steel Guards and Gearbox Shields must be used and maintained in good working condition. All safety devices should be inspected carefully at least daily for missing or broken components. Missing, broken, or worn items must be replaced at once to reduce the possibility of injury or death from thrown objects, entanglement, or blade contact. (SSM-07)



Replace bent or broken blades with new blades. NEVER ATTEMPT TO STRAIGHTEN, WELD, OR WELD HARDFACING ON BLADES SINCE THIS WILL LIKELY CRACK OR OTHERWISE DAMAGE THE BLADE WITH SUBSEQUENT FAILURE AND POSSIBLY CAUSE SERIOUS INJURY FROM THROWN BLADES. (SGM-10)



Wear gloves and exercise care when handling blades. Blades are SHARP and can cause lacerations to hands and other parts of the body if not safely handled. (SSM-09)



Relieve hydraulic pressure prior to doing any maintenance or repair work on the Implement. Place the Implement on the ground or securely block up, and turn off the engine. Push and pull the Remote Cylinder lever in and out several times prior to starting any maintenance or repair work. (S3PT-09W)



Use care when swinging or extending the boom to maintain tractor stability and control. (SBM-13W)



The Mower is designed for certain mowing applications and is rated to cut up to a specific size vegetation (see Mower Standard Equipment and Specifications). DO NOT use this mower to cut vegetation above the Mower's rated capacity or to cut any type of non-vegetative material. Only operate this Mower on a properly sized and equipped Boat. Operating this Mower in an application for which it is not designed and/or operating the Mower with the wrong size boat can cause unstable conditions or equipment failure resulting in possible serious injury or death. (SGM-14W)

PARTS INFORMATION

Tiger mowers use balanced and matched system components for blade carriers, blades, cuttershafts, knives, knife hangers, rollers, drivetrain components, and bearings. These parts are made and tested to Tiger specifications. Non-genuine "will fit" parts do not consistently meet these specifications. The use of "will fit" parts may reduce mower performance, void mower warranties, and present a safety hazard. Use genuine Tiger mower parts for economy and safety. (SPTM-1)

SEE YOUR TIGER DEALER

SAFETY

SAFETY

Storage and Parking Safety Instructions and Practices



To prevent tipping of the Implement when stored, use additional blocks and support stands to securely block up the implement. (S3PT-6W)

Transporting Safety Instructions and Practices



Be particularly careful when transporting the Implement with the Boat. Turn curves or at a low speed and using a gradual steering angle. This Implement raises the center of gravity of the boat and moves it to the rear. Add enough ballast to prevent loss of control of the boat or tipping-over. (S3PT-02W)



Allow sufficient clearance for the Implement to swing outward while turning. Implements carried to the side of the Boat will swing outside the normal path when making turns. Contacting a solid object while turning will cause equipment damage, the boat to tip over and possible injury. (S3PT-20W)



When the boom and mower head is folded for transport, the center of gravity is raised and the possibility of tipping over is increased. Operate slowly and use extreme caution in rough water. Overturning the boat could result in serious injury or even death. (STI-02W)



Secure the Implement for transport before transporting at speeds in excess of 5 mph. Secure boom and mower head in the transport position before transporting. (STI-7W)



Always keep a careful lookout and use extreme care when working around overhead obstructions and electrical power lines. The Implement can be over 10 feet high. Never allow the Implement to come within 10 feet of any power line. (STI-8W)



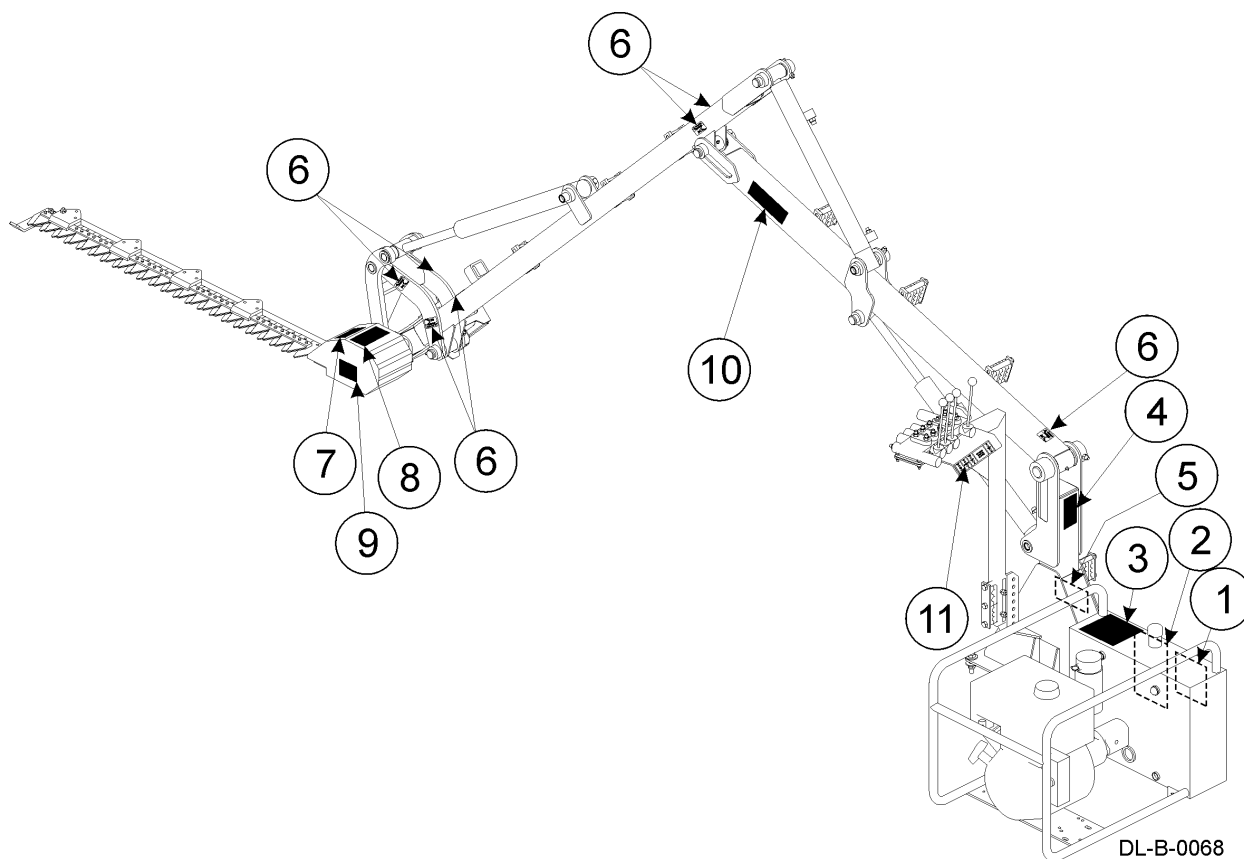
Concluding Safety Instructions and Practices

In addition to the design and configuration of this Implement, including Safety Signs and Safety Equipment, hazard control and accident prevention are dependent upon the awareness, concern, prudence, and proper training of personnel involved in the operation, transport, maintenance, and storage of the machine. Refer also to Safety Messages and operation instruction in each of the appropriate sections of the boat and Equipment Manuals. Pay close attention to the Safety Signs affixed to the boat and Equipment. (SG-18W)

SAFETY

Decal Location

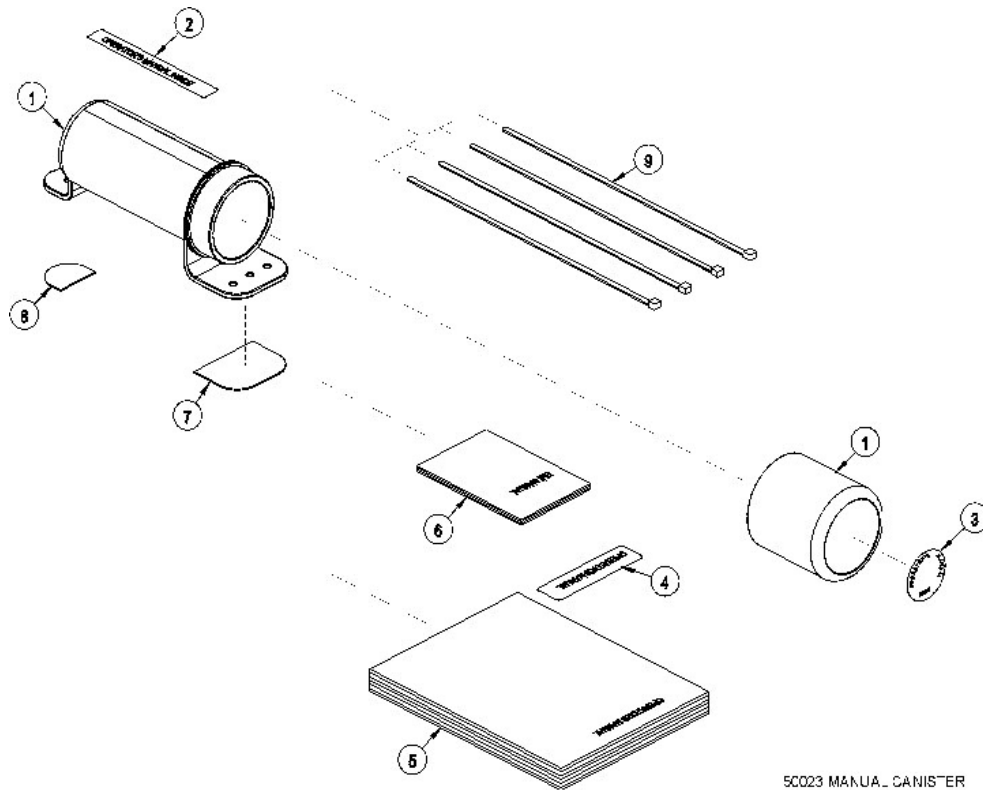
NOTE: Tiger supplies safety decals on this product to promote safe operation. Damage to the decals may occur while in shipping, use, or reconditioning. Tiger cares about the safety of its customers, operators, and bystanders, and will replace the safety decals on this product in the field, free of charge (Some shipping and handling charges may apply). Contact your Tiger dealer to order replacement decals.



ITEM	PART NO.	QTY.	TYPE	DESCRIPTION
	-	-	-	
1.	D549_6	1	DANGER	Read Operators Manual
2.	02958241	1	DANGER	Mutli-Hazard Boom Mower
3.	02965262	1	WARNING	Oil/Leak Penetration
4.	32709	1	IMPORTANT	Use Genuine Tiger Parts
5.	02962765	1	DANGER	Moving Machinery Pinch Points
6.	02962764	7	DANGER	Pinch Points/Scissors
7.	3688303	1	DANGER	Keep Away Sharp Blades
8.	02970354	1	IMPORTANT	Inspect Knife Clearance
9.	0410300	1	CAUTION	Keep Shields in Place
10.	33438	2	LOGO	TIGER
11.	06550056	1	INSTRUCT	Valve Controls

SAFETY




SAFETY



ITEM	PART NO.	QTY	DESCRIPTION
	50023	AVAIL	MANUAL CANISTER COMPLETE
1	00776031	1	ROUND MANUAL CANISTER
	33997	1	DECAL, SHEET, MANUAL CANISTER
2		*	DECAL
3		*	DECAL
4		*	DECAL
5	*	AVAIL	SPECIFIC PRODUCT MANUAL
6	33753	1	EMI SAFETY MANUAL
7	34296	1	FRONT ADHESIVE PAD
8	34297	1	REAR ADHESIVE PAD
9	6T1823	4	ZIP TIE 14" LONG

SAFETY

Decal Description

 DANGER	 PELIGRO
<p>TO AVOID SERIOUS INJURY OR DEATH:</p> <ul style="list-style-type: none"> • READ AND UNDERSTAND the provided Operator's Manuals, safety signs and information decals for tractor and implement before operating equipment. • CONTACT DEALER immediately if you do not have manuals. • CONTACT DEALER to explain any instructions not fully understood. • KNOW HOW to stop tractor and equipment quickly for an emergency. • ALWAYS WEAR safety glasses. • WEAR hard hat, safety shoes and gloves for protection when operating equipment. 	<p>PARA EVITAR LESION SERIA O MUERTE:</p> <ul style="list-style-type: none"> • LEA Y ENTIENDA el Manual de Operador proporcionado, signos de seguridad y calcomanias informativas para el tractor y implemento antes de operar el equipo. • CONTACTE AL DISTRIBUIDOR inmediatamente si no tiene los manuales. • CONTACTE AL DISTRIBUIDOR para que le explique cualquier instrucciones que no entiende completamente. • ENTIENDA COMO parar el tractor y equipo rapidamente en caso de una emergencia. • SIEMPRE USE lentes de seguridad. • USE un casco, zapatos de seguridad y guantes para su protection cuando esta operando el equipo. D549-6 <div data-bbox="673 493 933 1291">  </div>

SAFETY

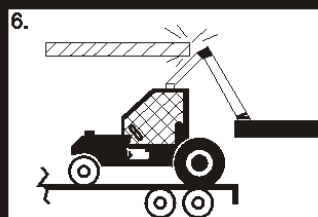
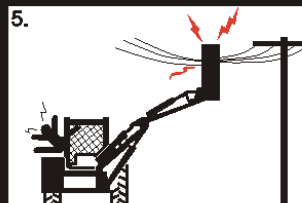
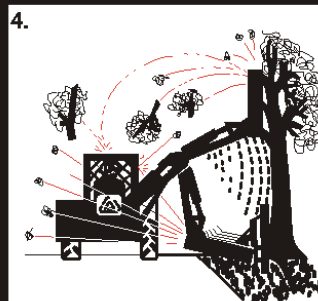
SAFETY



DANGER

1. **EACH REAR WHEEL MUST HAVE A MINIMUM OF 1000 POUNDS CONTACT** WITH THE SURFACE TO PREVENT LATERAL INSTABILITY AND POSSIBLE TIP-OVER WITH **BODILY INJURY**. WIDEN WHEEL TREAD AND ADD WEIGHTS IF NEEDED. SEE MANUAL OR CALL ALAMO GROUP CUSTOMER SERVICE FOR COUNTERWEIGHT PROCEDURE.
2. **TRANSPORT CAREFULLY!** SLOW DOWN EVEN MORE ON SLOPES AND WHEN TURNING; NEVER TURN **UP A SLOPE** SHARPLY OR AT HIGH SPEED; AND USE EXTRA CARE IN ROUGH OR BUMPY AREAS TO PREVENT OVERTURN AND POSSIBLE CRUSHING **INJURY OR DEATH**. IF YOUR VIEW TO THE REAR IS BLOCKED, IT IS **YOUR RESPONSIBILITY** TO **INSTALL MIRRORS** THAT PROVIDE A REAR VIEW TO PREVENT ACCIDENTS FROM BLIND SPOTS.
3. **REAR-MOUNTED BOOM MOWERS** MOVE CENTER OF GRAVITY TO THE REAR AND REMOVE WEIGHT FROM FRONT WHEELS. **ADD FRONT BALLAST** UNTIL AT LEAST **20% OF TRACTOR'S WEIGHT IS ON FRONT WHEELS** TO PREVENT REARING UP, LOSS OF STEERING CONTROL, AND POSSIBLE **INJURY**.
4. **NEVER OPERATE UNIT WITHOUT AN OPS (OPERATOR PROTECTIVE STRUCTURE) OR CAB** TO PREVENT INJURY FROM OBJECTS **THROWN FROM GROUND** AND OVERHEAD TRIMMING. **STOP CUTTING** IF ANYONE IS WITHIN **100 YARDS**.
5. **KEEP THE BOOM AND CUTTERHEAD AT LEAST 10 FEET FROM ELECTRIC LINES AND PIPE LINES** TO PREVENT ACCIDENTAL CONTACT AND POSSIBLE SERIOUS INJURY OR EVEN DEATH.
6. **WHEN TRANSPORTING BOOM MOWERS ON A TRUCK OR TRAILER, THEIR HEIGHT OR WIDTH MAY EXCEED LEGAL LIMITS. CONTACT WITH SIDE OR OVERHEAD STRUCTURES OR POWER LINES CAN CAUSE SERIOUS INJURY OR DEATH.** LOWER BOOM TO REDUCE HEIGHT AND/OR REMOVE MOWING HEAD TO REDUCE WIDTH TO THE LEGAL LIMITS, IF NEEDED.

02958241



SAFETY



WARNING



DO NOT OPERATE EQUIPMENT WITH OIL LEAKS

1. High pressure fluid can be invisible and can be injected into the body through the skin. Serious injury or even death can result. A doctor familiar with this type of injury must surgically remove the injected fluid immediately.
2. You should visually inspect for hydraulic fluid leaks before using the equipment. Never use your hand to check for leaks. Wear oil impenetrable gloves, safety glasses, and use a piece of wood or cardboard to check for evidence of leaks. If you suspect a leak, Remove the hose and have it tested at a Dealer.
3. Inspect hoses regularly. Frayed, torn, or crimped hoses may rupture suddenly and violently resulting in serious bodily injury from a flying hose end or from scalding, burn injuries, or oil penetration. Oil sprayed on hot equipment or components can result in fire. Repair or replace hoses as indicated to prevent unexpected failure and possible serious injury to operator or bystanders.

KEEP SHIELDS OVER HYDRAULIC COMPONENTS IN PLACE.

02965262

IMPORTANT

For your safety and to guarantee optimum product reliability, always use Genuine TIGER replacement parts. The use of inferior "will Fit" parts will void Warranty of your TIGER implement and may cause premature or catastrophic failure which can result in serious injury or death. If you have any questions concerning the repair parts you are using, contact TIGER, 3301 N. Louise Ave., Sioux Falls, SD 57107.

 32709

SAFETY

SAFETY

SAFETY



SAFETY

! DANGER



KEEP AWAY SHARP BLADES

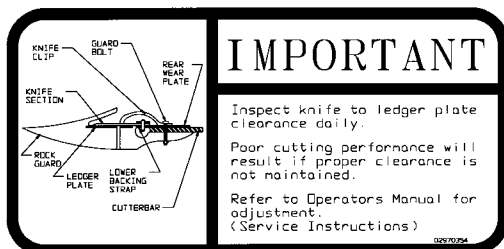
- Do not put hands or feet near the cutterbar. Blade contact can result in serious injury.
- Stay away until all motion has stopped and the mower is securely blocked up.
- Keep fingers clear of cutterbar when folding cutterbar for transport.

3688303

! CAUTION

1. Keep all shields in place
2. Stop machine to adjust and oil.
3. If mechanism becomes clogged shut off power before cleaning
4. Keep hands, feet and clothing away from power-driven parts.
5. Keep off mower and keep others off.
6. Warn bystanders to keep away.

0410300



IMPORTANT

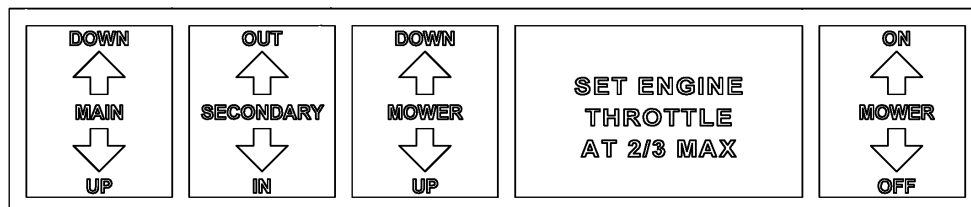
Inspect knife to ledger plate clearance daily.

Poor cutting performance will result if proper clearance is not maintained.

Refer to Operators Manual for adjustment.
(Service Instructions)

02970704

Tiger™



SAFETY

SAFETY

Federal Laws and Regulations

This section is intended to explain in broad terms the concept and effect of federal laws and regulations concerning employer and employee equipment operators. This section is not intended as a legal interpretation of the law and should not be considered as such.

Employer-Employee Operator Regulations

U.S. Public Law 91-596 (The Williams-Steiger Occupational and Health Act of 1970) OSHA

This Act Seeks:

"...to assure so far as possible every working man and woman in the nation safe and healthful working conditions and to preserve our human resources..."

DUTIES

Sec. 5 (a) Each employer-

- (1) shall furnish to each of his employees employment and a place of employment which are free from recognized hazards that are causing or are likely to cause death or serious physical harm to his employees;
- (2) shall comply with occupational safety and health standards promulgated under this Act.
- (b) Each employee shall comply with occupational safety and health standards and all rules, regulations and orders issued pursuant to this Act which are applicable to his own actions and conduct.

OSHA Training Requirements

Title 29, Code of Federal Regulations Part 1928.57(a)(6). www.osha.gov

Operator instructions. At the time of initial assignment and at least annually thereafter, the employer shall instruct every employee who operates an agricultural tractor and implements in the safe operating practices and servicing of equipment with which they are or will be involved, and of any other practices dictated by the work environment.

Keep all guards in place when the machine is in operation;

Permit no riders on equipment

Stop engine, disconnect the power source, and wait for all machine movement to stop before servicing, adjusting, cleaning or unclogging the equipment, except where the machine must be running to be properly serviced or maintained, in which case the employer shall instruct employees as to all steps and procedures which are necessary to safely service or maintain the equipment.

Make sure everyone is clear of machinery before starting the engine, engaging power, or operating the machine.

Employer Responsibilities:

To ensure employee safety during Tractor and Implement operation, it is the employer's responsibility to:

1. Train the employee in the proper and safe operation of the Tractor and Implement.
2. Require that the employee read and fully understand the Tractor and Implement Operator's manual.
3. Permit only qualified and properly trained employees to operate the Tractor and Implement.
4. Maintain the Tractor and Implement in a safe operational condition and maintain all shields and guards on the equipment.
5. Ensure the Tractor is equipped with a functional ROPS and seat belt and require that the employee operator securely fasten the safety belt and operate with the ROPS in the raised position at all times.
6. Forbid the employee operator to carry additional riders on the Tractor or Implement.
7. Provide the required tools to maintain the Tractor and Implement in a good safe working condition and provide the necessary support devices to secure the equipment safely while performing repairs and service.
8. Require that the employee operator stop operation if bystanders or passersby come within 300 feet.

Child Labor Under 16 Years of Age

Some regulations specify that no one under the age of 16 may operate power machinery. It is your responsibility to know what these regulations are in your own area or situation. (Refer to U.S. Dept. of Labor, Employment Standard Administration, Wage & Home Division, Child Labor Bulletin #102.)

ASSEMBLY SECTION

Assembly Section 2-1

ASSEMBLY

**Before attempting to mount or service your Tiger mower,
it is important to read and understand
all of the information in this manual.**

ASSEMBLY

Check complete shipment list against the packing list to make sure there are no shortages. Read and understand the entire Assembly Section instructions before attempting to mount your Tiger mower. Refer to the Parts Section of this manual for detailed illustrations to locate all parts.



Always use a floor jack, hoist or fork lift to lift and raise heavy parts.

WEEDOO SICKLE BAR MOWER INSTALLATION

With an overhead hoist, raise the Weedoo frame up and position to the correctly matching mounting holes in the boat assembly. Install pins and all other hardware as shown in Parts Section to secure the Weedoo sickle bar mower to the boat.

FILLING HYDRAULIC RESERVOIR

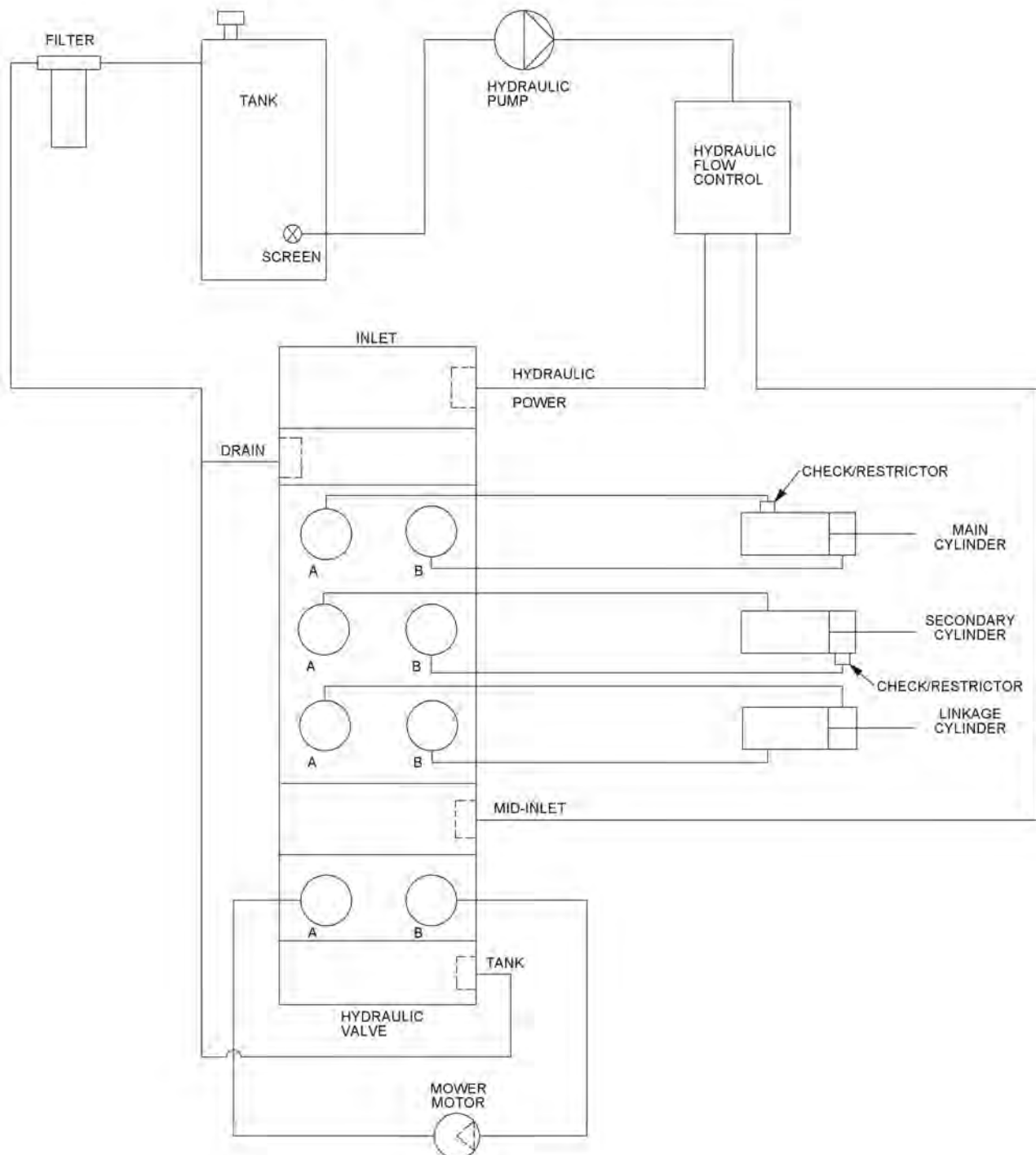
Refer to the Maintenance Section for filling specifications and hydraulic oil requirements.

NOTE: Starting or running your Tiger mower before filling reservoir will cause serious damage to hydraulic pump.

GREASE HINGE PIN ZERKS ON BOOM AFTER ASSEMBLY, ONCE UNDER LOAD WITH BOOM ELEVATED AND AGAIN AT REST WITH BOOM SUPPORTED

ASSEMBLY

BOOM HYDRAULIC DIAGRAM



ASSEMBLY

[illegible]

© 2019 Alamo Group Inc.

FINAL PREPARATION FOR OPERATION

Place operator's safety and operation decals on the valve mount and hydraulic tank where they are clearly visible to the operator. These decals should be understood by each operator of the machine in conjunction with the Safety and Operation Sections of this book. The decals are to be maintained in good condition as a reminder to the operator, and should be replaced if damaged.

Finally, all bosses, pins and pivot points will need to be greased as instructed in the Maintenance Section of this manual. The hydraulic reservoir can also be filled with the recommended fluid (see Maintenance Section) and the filter installed in the the tank. Double check all fittings and fasteners BEFORE starting the boat. Also secure any loose hoses together with zip ties and wrap with split hoses where friction may occur on the hoses.

WARNING!



BEFORE starting or operating the mower you must read and understand the Safety and Operation Sections of this manual completely.

BE SURE THE BALL VALVES ARE OPEN! Start mower and allow instruments to stabilize. Using a piece of paper or cardboard as noted in the Safety and Maintenance Sections, check all fittings and connections for hydraulic leaks.

If a leak is found, you must shut down the mower, set the cutter on the ground. Before attempting to fix the leak, you must actuate the lift valve handles several times to relieve any pressure in the lines.

Before operating the mower, the cutter head and boom should be slowly moved throughout the full range of motion. Watch for any condition that would cause pinching or excess stress on the hoses.

MOWER TESTING

Take the boat to a place free of loose objects in the water. Operate the cylinders through their full range of motion again, to clear the lines of air. Follow the instructions in the Operation Section to operate the mower. Vibration of the mower should be minimal at all times.

If any parts of this Assembly Section, or any other section of this manual are not clearly understood you must contact your dealer or the address on the front of this manual for assistance!

ASSEMBLY

ASSEMBLY

OPERATION SECTION

Boom Operation Section

OPERATION

Safety is of primary importance to the owner / operator and to the manufacturer. The first section of this manual includes a list of Safety Messages, that, if followed, will help protect the operator and bystanders from injury or death. Many of the messages will be repeated throughout the manual. The owner / operator / dealer should know these Safety Messages before assembly and be aware of the hazards of operating this mower during assembly, use, and maintenance.

The Safety Alert Symbol combined with a signal word, as seen below, is intended to warn the owner / operator of impending hazards and the degree of injury possible during operation.

DANGER!



Indicates an imminently hazardous situation that, if not avoided, **WILL** result in **DEATH OR VERY SERIOUS INJURY**.

WARNING!



Indicates an imminently hazardous situation that, if not avoided, **COULD** result in **DEATH OR SERIOUS INJURY**.

CAUTION!



Indicates an imminently hazardous situation that, if not avoided, **MAY** result in **MINOR INJURY**.

IMPORTANT!

Identifies special instructions or procedures that, if not strictly observed, could result in damage to, or destruction of the machine, attachments or the environment.

NOTE:

Identifies points of particular interest for more efficient or convenient operation or repair.

WARNING!



Many varied objects, such as wire, cable, rope, or chains, can become entangled in the operating parts of the mower head. Such a situation is extremely hazardous and could result in serious injury or even death. Inspect the cutting area for such objects before mowing. Remove any like object from the site. Never allow the cutting blades to contact such items.

OPERATION

CAUTION!



Before any operation of boat and mower, the user should read and understand the safety and operating instructions for both the boat and the mower. The user should also be familiar with the location and functions of the unit's instruments and controls. Being familiar with the machine and its controls will increase efficiency and reduce possibility of serious injury or damage to the unit. The operator should work slowly and carefully until he feels comfortable with the machine. Speed and skill will be attained much easier if the necessary time is spent to familiarize yourself with the machine and its operations.

WARNING!



Extreme care should be taken when operating near loose objects such as gravel, rocks, wire, and other debris. Inspect the area before mowing. Foreign objects should be removed from the site to prevent machine damage and/or bodily injury or even death. Any objects that cannot be removed must be clearly marked and carefully avoided by the operator. Stop mowing immediately if blades strike a foreign object. Repair all damage before resuming mowing.



STARTING BOAT AND MOWER

Check the operator's manual received from the boat manufacturer, for their recommendation and procedures pertaining to your particular make and model.

WARNING!



When mower parts are in motion, serious injury may occur if caution is not used or danger is not recognized. Never allow bystanders within 60 feet of the machine when mower is in operation.

WARNING!



Be sure the ball valves on the mower hydraulic tank are OPEN before starting the boat. Serious damage to the hydraulic system can occur if the valves are not open.

WARNING!



Check to make sure mower switch is in the "OFF" position. The unit is designed not to start if the switch is in the "on" position. If boat starts with switch on, turn off boat and contact your local Tiger dealership for assistance.

OPERATION

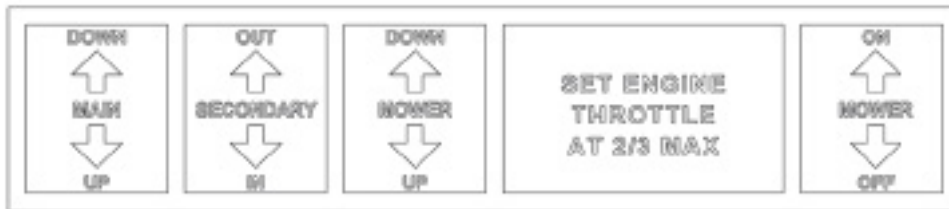
LEARNING BOOM AND MOWER OPERATION

Start the motor and allow the engine to stabilize. Without starting the mower, practice positioning the boom and mower. Remember, speed and skill will be attained easier if the necessary time is spent familiarizing yourself with the machine and its operations. When you feel comfortable at controlling the position of the mower, return the mower to the travel position, and transport the mower to the desired mowing location.

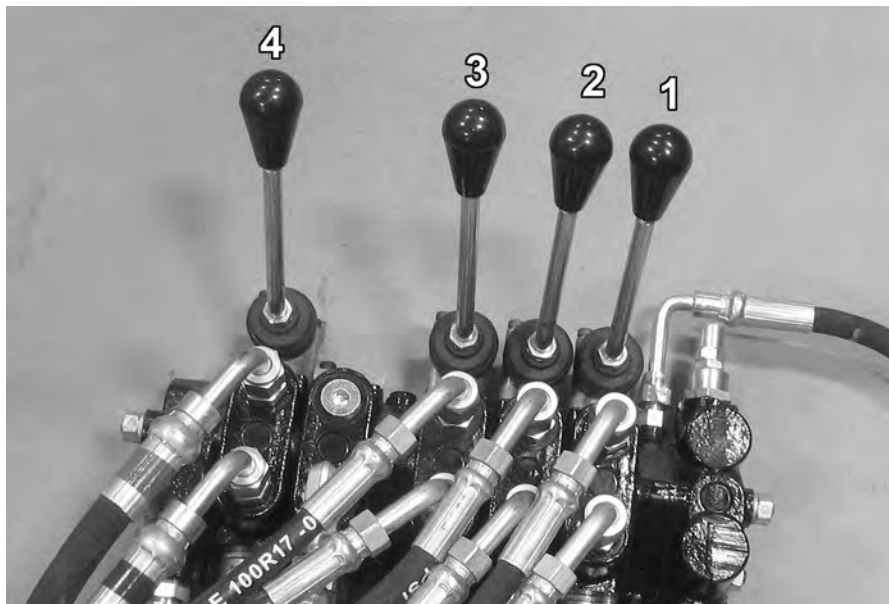
If mowing for the first time, we recommend choosing a shore area relatively flat with a minimum of sign posts, guard rails, etc. As always, you should inspect the area for other objects that can cause potential hazards and removing them before mowing.

VALVE CONTROLS

A control lever decal similar to the one shown below should be near the control valve to remind the operator of the lever functions.



The main control valve on the Tiger Boom Mower has four sections with tapered spools, located near the driver's seat. The malfunction of a section of the valve does not necessitate the replacement of the entire "bank", only the faulty section. Each section of the valve controls a certain position of the boom or mower. Seated in the operator's seat, the controls from left to right are #1 - primary(main) boom, #2 - secondary boom, #3 - mower tilt, #4 - motor on-off.



Weedoo Sickle Bar Mower Operation Section 3-4

OPERATION

MOWER OPERATION

WARNING!



When parts are in motion, serious injury may occur if caution is not used or danger is not recognized. Never allow bystanders within 60 feet of the machine when in operation. Extreme care should be taken when operating near loose objects – such as gravel, rocks and debris. These conditions should be avoided.

The parts in this machine have been designed and tested for rugged use. However, they could fail upon impact with heavy solid objects – such as steel guard rails, concrete abutments, etc., causing them to be thrown at a very high velocity. Never allow cutter head to contact such objects. Inspecting the cutting area for such objects and removing them prior to mowing can help eliminate these potential hazards.

Once on location, lower the mower in front of the material to be cut, so the mower does not have to start under a load. With the boat at an idle, engage mower. Bring mower up to two-third of maximum R.P.M. and slowly move boat forward into the material. A sickle bar mower should be carried so that the mower weight is carried by the boom when mowing. When the sickle bar mower is carried this way, the ground will not: cause damage to the knives, cause damage to the boom, and possibly move the boat in an unexpected manner.

SICKLE BAR BOOM MOWER

The sickle bar boom mower was designed for cutting brush and foliage up to 2 inches in diameter or multiple branches that have a total cross section area equivalent to one 2 inch branch.

During mower operation, the throttle must be used to set engine speed at two-thirds of maximum R.P.M. This reduces the possibility of cutter assembly damage.

The horizontal positioning action of the boom is designed to position the cutting head and provide a limited pressure relief when excessive pressure is applied to the boom. Do not force the cutting head into heavy branches or stumps. Damage to the unit may result.

CAUTION!



When using the mower for trimming small branches or thick grass, let the mower saw into them. Do not lower the mower head down directly onto a bush. The mower blades are designed to cut with the front, and misuse cause damage to the mower and a hazardous situation for the operator

OPERATION

CAUTION!



Powering the boom down, forcing mower onto the ground may damage mower and it's attachment to the boom, creating a potentially hazardous situation.

To ensure a clean cut, engine speed should be maintained at approximately two thirds of the maximum R.P.M.

CAUTION!



DO NOT use excessive force when positioning cutting head into heavy branches or stumps. Damage to the unit may result. It is best to let the cutter head "eat away" slowly at heavy cutting jobs.

The mower will operate more efficiently in tougher conditions and with less power if the knives are kept sharp. If the mower begins to vibrate, stop the boat, check for wire wrapped around the mower or damaged knives. When replacing knives, it is recommended that you replace all knives with new knives to ensure proper balance so the mower will not vibrate severely or bind. Severe vibration may result if knives with unequal wear are used.

WARNING!



If bystanders approach within 60 feet while mower is in operation turn mower lever to "OFF" immediately! After shutdown, never leave the boat or allow bystanders to approach within **60 FEET** of the unit until all motion stops completely.

If cutter jams and stops, turn mower lever to "OFF", and move the boat "AFT". Normally this action will clear the cutter head. If not, tilt mower until adjacent to the secondary boom, then stow the boom in the boomrest. Shut off the boat and allow all motion to cease. At that point it is safe to leave the boat and clear the cutter head manually.

After the first day of operation, all bolts should be checked and tightened securely. This should be done periodically to ensure the bolts do not become loose and cause damage to the boat or mower, or injury to the operator.

OPERATION

TRANSPORTING MOWER

Transporting under the unit's own power:

When transporting between job sites or between cutting passes, the following procedure should be followed: Shut off the power to the cutting head and allow all motion to come to a complete stop. Raise the boom above ground material or foilage, being cautious of overhead obstructions such as highline wires. Tilt the deck completely towards the secondary boom. Stow the boom in the boomrest. Secure the sickle bar mower.

Transporting unit by trailer:

Shut off the power to the cutting head and allow all motion to come to a complete stop. Raise the boom above ground material or foilage, being cautious of overhead obstructions such as highline wires. Tilt the deck completely towards the secondary boom. Stow the boom in the boomrest. Secure the sickle bar mower. Move the boat onto the center of the trailer to avoid uneven distribution of weight and staying within local width restrictions. Tie down the boat as needed.

Retract swivel cylinder and place clear of boom. Pivot boom forward to the center of flat bed. Lower deck onto the trailer bed, and shut off the tractor. The boat and the mower head should now be chained down securely to the trailer bed.

CAUTION!



If any part of this Operation Section, or any other section of this manual is not completely understood, contact your Tiger dealer or the address on the cover of this manual for assistance.

OPERATION

BOOM MOWER PRE-OPERATION INSPECTION



Mower ID# _____

Make _____

Date: _____

Shift _____

WARNING!



Before conducting the inspection, make sure the boat engine is off, all movement has stopped and the boat is securely immobilized. Also the mower head is resting on the ground (or is securely blocked up and supported) and all hydraulic pressure has been relieved.

OPERATION

Item	Condition at Start of Shift	Specific Comments if not O.K.
The Operator's Manual is in the Canister on the mower.		
All Safety Decals are in place and legible		
The Mounting frame bolts are in place and tight		
The Boom connection bolts & pins are tight		
There are no cracks in boom		
The Hydraulic Cylinders pins are tight		
The Hydraulic Pump hose connections are tight		
The Hydraulic Valve hose connections are tight		
The Hydraulic Valve controls function properly		
There are no leaking or damaged hoses		
The Hydraulic Oil level is full		
There is no evidence of Hydraulic leaks		
The Blades are not chipped, cracked or bent		
The Blade bolts are tight		
The Mower shields are in place and in good condition		
The Hydraulic motor mounting bolts are tight		
The pivot assembly and boom are properly lubricated		

Operators Signature: _____

DO NOT OPERATE AN UNSAFE BOAT OR MOWER

MAINTENANCE SECTION

MAINTENANCE

Tiger Mowers are designed for high performance and rugged durability, yet with simplified maintenance. The purpose of this section of the manual is to help the operator in the regular servicing of the mower. Regular maintenance at the intervals mentioned will result in the maximum efficiency and long life of the Tiger Mower.

When you purchase a Tiger Mower you also acquire another valuable asset, Tiger's parts organization. Our rapid and efficient service has guaranteed the customer satisfaction for many years. Tiger parts keep up with the demands for efficiency, safety and endurance expected of the Tiger Mower.

MAINTENANCE PRECAUTIONS

- Be sure end of grease gun and zerks are clean before using. Debris injected into bearings, etc. with grease will cause immediate damage.
- DO NOT use a power grease gun to lubricate bearings. These require very small and exact amounts of lubrication. Refer to the detailed Maintenance Section for specific lubrication instructions. DO NOT over-grease bearings.
- Be alert to maintenance indicators such as the in-tank filter pressure gauge, hydraulic reservoir sight gauge, etc. Take the required action to correct any problems immediately.
- Release of energy from pressurized systems may cause inadvertent actuation of cylinders, or sudden release of compressed springs. Before disconnecting any hoses relieve pressure by shutting tractor off, setting cutter on ground and actuating lift valve handles.

WARNING!



DO NOT use hands to check for suspected leaks in hydraulic hoses! Hydraulic fluid escaping under pressure can have sufficient force to penetrate skin and cause serious injury. If fluid is injected into skin, it must be surgically removed within a few hours or gangrene may result. Use a small piece of wood or cardboard, not hands, to search for pin hose leaks. Be sure all pressure is relieved whenever disconnecting lines. Be sure all connections are tight and hoses and lines are not damaged before applying pressure.

BREAK IN PERIOD

In addition to following the break in instructions for your particular boat, the in-line hydraulic fluid filter should be replaced after the first 50 hours of service. Thereafter the filter should be replaced every 500 hours, or yearly, whichever comes first.

MAINTENANCE

DANGER!



Never work under the Implement, the framework, or any lifted component unless the Implement is securely supported or blocked up to prevent sudden or inadvertent falling which could cause serious injury or even death.

WARNING!



Do not modify or alter this Implement. Do not permit anyone to modify or alter this Implement, any of its components or any Implement function.

WARNING!



Relieve hydraulic pressure prior to doing any maintenance or repair work on the Implement. Place the Mower Head on the ground or securely supported on blocks or stands and turn off the engine. Push and pull the control Levers several times to relieve pressure prior to starting any maintenance or repair work.

DANGER!



Always disconnect the wire leads from the mower pump solenoid before performing service on the Boat or Mower. Use caution when working on the Boat or Mower. Boat engine must be stopped before working on Mower or Boat. The Mower Blades could inadvertently be turned on without warning and cause immediate dismemberment, injury or death.

MAINTENANCE

REGULAR MAINTENANCE

The intervals at which regular servicing should be done are based on hours of operation.

DAILY OR EVERY 8 HOURS

ITEM	SERVICE	COMMENTS
Pivot Points	Lubricate	Inject grease until it appears at ends
Hydraulic Fittings	Check for leaks	Tighten when needed. Do Not use hands to check for leaks, see maintenance precautions
Knives	Check	Inspect for missing or damaged knives, change as needed
Knife mounting bolts	Check	Re-torque bolts to torque specifications in this section
Main Frame and Deck	Check	Retorque bolts to torque specifications in this section
Hydraulic Fluid Level	Check	Add if required per fluid recommendations

MAINTENANCE

TROUBLESHOOTING

SYMPTOMS	CAUSE	REMEDY
Vibration	<ol style="list-style-type: none"> 1. Loose bolts 2. Mower assembly unbalanced 	<ol style="list-style-type: none"> 1. Check all bolts and tighten to recommended torque specs. 2a. Check for damaged blades. Replace if needed. 2b. Check for wire, rope, etc. entangled in mower assembly
Mower will not lift	<ol style="list-style-type: none"> 1. Hyd. Fluid low 2. Leaks in line 3. Faulty relief valve 4. Kinked or blocked 5. Faulty cylinder 	<ol style="list-style-type: none"> 1. Check and refill Hyd. Fluid Check In-Tank Hyd. Screen 2. Tighten or replace fittings and hoses 3. Check pressure in line. Line pressure in Control Valve should be at least 2500 P.S.I. 4. Clean or replace lines 5. Inspect, repair or replace cylinder
Mower will not start or run	<ol style="list-style-type: none"> 1. Low oil level 2. Line leak 	<ol style="list-style-type: none"> 1. Check Hyd. tank and fill 2. Check all fittings and lines, re-tighten or replace
Motor turns slowly or not at all.	<ol style="list-style-type: none"> 1. Contaminants 2. Suction lines 3. Low oil level 	<ol style="list-style-type: none"> 1. Remove large nut on side of large restricting spool valve block. Remove spring, and use movement in needle nose vise grip to pull spoolvalve body. from block. Check block and spool for contaminants and scratches. Clean parts or replace if scratched. 2. Check for kinks or obstruction in suction hose. 3. Check Hyd. tank level and fill.
Pump will not work	<ol style="list-style-type: none"> 1. Excessive wear on internal parts 	<ol style="list-style-type: none"> 1. Disassemble and repair.
Motor will not work	<ol style="list-style-type: none"> 1. Excessive wear on internal parts 	<ol style="list-style-type: none"> 1. Disassemble and repair.





NOTE: If flow meter is available, check pressure and flow volume for all suspected hydraulic problems.

If the solution to your problem cannot be found in this section, call the Technical Service representative at the number shown on the front cover of this manual.

MAINTENANCE





TORQUE SPECIFICATIONS

Torque for Standard Fasteners

Nominal Dia. (in.)	threads per inch	 Grade 2			 Grade 5			 Grade 8			 Grade 9		
		Tightening Torque			Tightening Torque			Tightening Torque			Tightening Torque		
		Lubed	Dry Plated	Dry plain	Lubed	Dry Plated	Dry plain	Lubed	Dry Plated	Dry plain	Lubed	Dry Plated	Dry plain
		K = 0.15	K = 0.17	K = 0.20	K = 0.15	K = 0.17	K = 0.20	K = 0.15	K = 0.17	K = 0.20	K = 0.15	K = 0.17	K = 0.20
Unified Coarse Thread Series													
1/4	20	49 in-lbs	59 in-lbs	66 in-lbs	76 in-lbs	86 in-lbs	101 in-lbs	107 in-lbs	122 in-lbs	143 in-lbs	126 in-lbs	143 in-lbs	168 in-lbs
5/16	18	101	122	135	157	178	209	221	251	295	259	294	346
3/8	16	15 ft-lbs	18 ft-lbs	20 ft-lbs	23 ft-lbs	26 ft-lbs	31 ft-lbs	33 ft-lbs	37 ft-lbs	44 ft-lbs	38 ft-lbs	43 ft-lbs	51 ft-lbs
7/16	14	24	29	32	37	42	49	52	59	70	61	70	82
1/2	13	37	44	49	57	64	75	80	90	106	94	106	125
9/16	12	53	63	70	82	92	109	115	130	154	135	153	180
5/8	11	73	87	97	113	128	150	159	180	212	186	211	248
3/4	10	129	155	172	200	227	267	282	320	376	331	375	441
7/8	9	125	150	167	322	365	429	455	515	606	533	604	710
1	8	187	225	250	483	547	644	681	772	909	799	905	1065
1 1/8	7	266	319	354	596	675	794	966	1095	1288	1132	1283	1510
1 1/4	7	375	450	500	840	952	1121	1363	1545	1817	1597	1810	2130
1 1/2	6	652	783	869	1462	1657	1950	2371	2688	3162	2779	3150	3706
Fine Thread Series													
1/4	28	56 in-lbs	68 in-lbs	75 in-lbs	87 in-lbs	99 in-lbs	116 in-lbs	123 in-lbs	139 in-lbs	164 in-lbs	144 in-lbs	163 in-lbs	192 in-lbs
5/16	24	112	135	150	174	197	231	245	278	327	287	325	383
3/8	24	17 ft-lbs	20 ft-lbs	23 ft-lbs	26 ft-lbs	30 ft-lbs	35 ft-lbs	37 ft-lbs	42 ft-lbs	49 ft-lbs	43 ft-lbs	49 ft-lbs	58 ft-lbs
7/16	20	27	32	36	41	47	55	58	66	78	68	78	91
1/2	20	41	49	55	64	72	85	90	102	120	105	120	141
9/16	18	59	71	78	91	103	121	128	146	171	151	171	201
5/8	18	82	99	110	127	144	170	180	204	240	211	239	281
3/4	16	144	173	192	223	253	297	315	357	420	369	418	492
7/8	14	138	165	184	355	403	474	502	568	669	588	666	784
1	14	210	252	280	542	614	722	765	867	1020	896	1016	1195
1 1/8	12	298	357	397	668	757	890	1083	1227	1444	1269	1439	1693
1 1/4	12	415	498	553	930	1055	1241	1509	1710	2012	1768	2004	2358
1 1/2	12	734	880	978	1645	1865	2194	2668	3024	3557	3127	3544	4169

Torque values for 1/4 and 5/16-in series are in inch-pounds. All other torque values are in foot-pounds.
 Torque values calculated from formula $T = KDF$, where
 K = 0.15 for "lubricated" conditions
 K = 0.17 for zinc plated and dry conditions
 K = 0.20 for plain and dry conditions
 D = Nominal Diameter
 F = Clamp Load

Torque-Tension Relationship for Metric Fasteners

Nominal Dia. (mm)	Pitch	 Class 4.6			 Class 8.8			 Class 10.9			 Class 12.9	
		Tightening Torque			Tightening Torque			Tightening Torque			Tightening Torque	
		Lubed	Dry Plated	Dry plain	Lubed	Dry Plated	Dry plain	Lubed	Dry Plated	Dry plain	Lubed	Dry plain
		K = 0.15	K = 0.17	K = 0.20	K = 0.15	K = 0.17	K = 0.20	K = 0.15	K = 0.17	K = 0.20	K = 0.15	K = 0.20
		(ft-lbs)	(ft-lbs)	(ft-lbs)	(ft-lbs)	(ft-lbs)	(ft-lbs)	(ft-lbs)	(ft-lbs)	(ft-lbs)	(ft-lbs)	(ft-lbs)
3	0.5	0.28	0.32	0.38	0.73	0.82	0.97	1.0	1.2	1.4	1.2	1.6
3.5	0.6	0.44	0.50	0.59	1.1	1.3	1.5	1.6	1.9	2.2	1.9	2.5
4	0.7	0.66	0.74	0.87	1.7	1.9	2.3	2.4	2.7	3.2	2.8	3.8
5	0.8	1.3	1.5	1.8	3.4	3.9	4.5	4.9	5.5	6.5	5.7	7.6
6	1	2.3	2.6	3.0	5.8	6.6	7.7	8.3	9.4	11	9.7	13
6	1.25	2.1	2.3	2.7	5.3	6.0	7.0	7.6	8.6	10	8.8	12
7	1	3.8	4.3	5.0	9.7	11	13	14	16	19	16	22
8	1	5.9	6.6	7.8	15	17	20	22	24	29	25	34
8	1.25	5.5	6.2	7.3	14	16	19	20	23	27	24	31
10	1.25	11	13	15	29	33	39	42	48	56	49	66
10	1.5	11	12	14	28	32	37	40	45	53	47	62
12	1.25	21	23	28	53	60	71	76	86	101	89	119
12	1.5	20	22	26	51	58	68	73	82	97	85	113
12	1.75	19	21	25	49	55	65	70	79	93	81	108
14	1.25	26	29	34	66	75	89	95	108	127	111	148
14	1.5	28	32	37	72	82	96	103	117	138	121	161
14	2	30	34	40	78	88	104	111	126	148	130	173
16	1.5	50	57	67	129	146	171	184	208	245	215	287
16	2	47	53	62	121	137	161	173	196	230	202	269
18	1.5	73	82	97	187	212	249	268	303	357	313	417
18	2.5	65	73	86	167	189	222	239	270	318	279	372
20	2.5	91	104	122	236	267	314	337	382	449	394	525

Clamp load calculated as 75% of the proof load for specified bolts. K = 0.15 for "lubricated" conditions
 All torque values are listed in foot-pounds
 Torque values calculated from formula $T = KDF$, where
 K = 0.17 for zinc plated, dry conditions
 K = 0.20 for plain and dry conditions
 D = Nominal Diameter
 F = Clamp Load

* These are intended to be general specifications. See tractor operators or service manual for exact specifications for your unit.

MAINTENANCE

LUBRICATION SPECIFICATIONS

Description	Application	General Specification	Recommended Mobil Lubricant
Mower Hydraulics	Reservoir	ECO friendly	Mobil EAL224H
Boom	Grease Gun	Lithium-Complex	Mobilgrease CM-S
Pivot Assembly	Grease Gun	Lithium-Complex	Mobilgrease CM-S
Cylinders	Grease Gun	Lithium-Complex	Mobilgrease CM-S

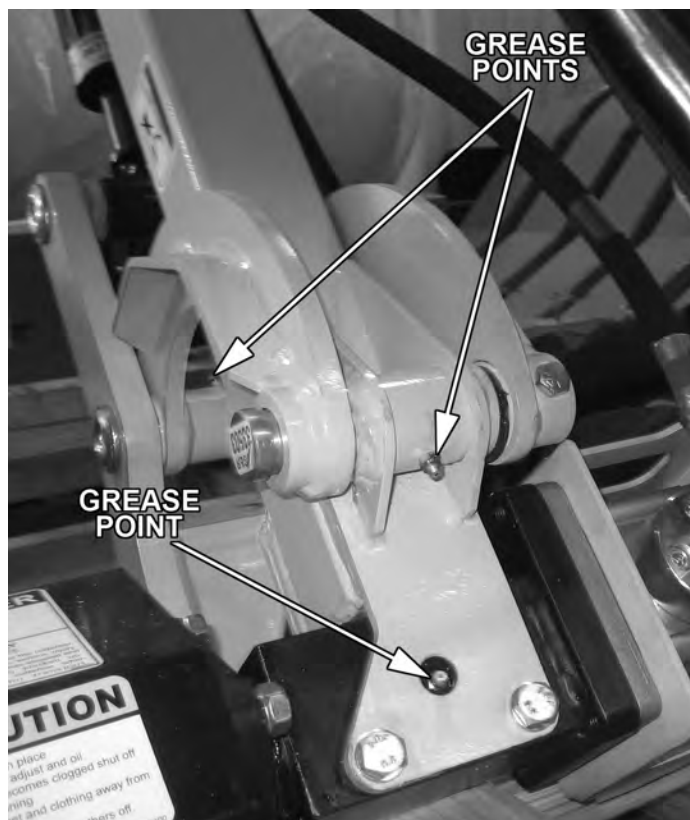
MAINTENANCE

GREASING POINTS ON BOOM AND PIVOT

Locate grease zerks on deck pivot assembly, at main / secondary boom joint, and at main boom / main frame joint. Inject Lithium-Complex Extreme Pressure grease conforming to NLGI2-ISO 320 specifications until grease begins to protrude from ends.

MAINTENANCE

**PIVOT
ASSEMBLY**



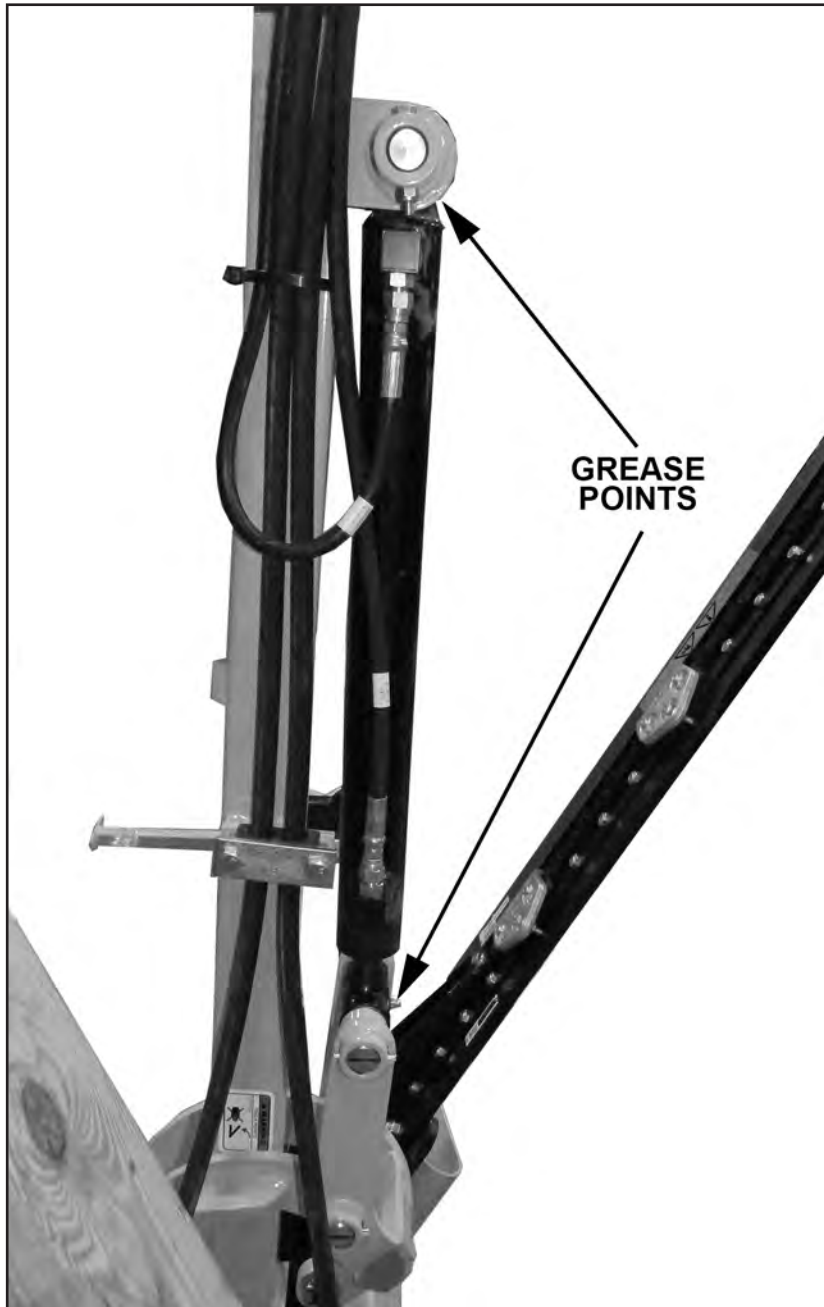
BOOM



MAINTENANCE

GREASING BOOM CYLINDER(S) PIVOT POINTS

Locate the zerk on the butt end tang of cylinder and on rod end tang. Inject Lithium-Complex Extreme Pressure grease conforming to NLGI2-ISO 320 specifications until grease begins to protrude from ends. This procedure is to be used on the main boom cylinder, secondary boom cylinder, mower pivot cylinders daily or at 8 hour intervals.



Weedoo Sickle Bar Mower Maintenance Section 4-9

MAINTENANCE

DAILY MAINTENANCE SCHEDULE

The following services should be performed daily or every 8 hours of service, following the detailed maintenance instructions in the operator's manual.

_____ Pivot points: Inject grease until it appears at ends.

_____ Hydraulic fittings: Check for leaks with paper or cardboard. Tighten fittings or replace hoses immediately.

_____ Knives: Inspect for missing or damaged knives, change (only complete sets) as needed.

_____ Main Frame / Deck: Unless otherwise specified retorque bolts according to torque specifications in this section.

_____ Hydraulic Fluid Level: Add, if required, per fluid recommendations.

Service performed by: _____ Date: ____/____/____ Hour

Meter: _____

Maintenance Section

**** This page may be copied and used as part of the daily maintenance routine.**

WEEDOO SICKLE BAR MOWER

PARTS SECTION

PART NAME INDEX

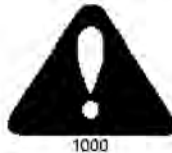
PARTS ORDERING GUIDE.....	3
WEEDOO MAIN ASSEMBLY.....	4
WEEDOO HYDRAULIC ASSEMBLY.....	6
WEEDOO HYDRAULIC ROUTING.....	8
CUTTER DRIVE BREAKDOWN.....	10
KNIFE ASSEMBLY.....	12
NOTES.....	14

PARTS ORDERING GUIDE

The following instructions are offered to help eliminate needless delay and error in processing purchase orders for the equipment in this manual.

1. The Parts Section is prepared in logical sequence and grouping of parts that belong to the basic machine featured in this manual. Part Numbers and Descriptions are given to help locate the parts and quantities required.
2. The Purchase Order must indicate the **Name and Address** of the person or organization ordering the parts, **who should be charged**, and if possible, the **serial number of the machine** for which the parts are being ordered.
3. The purchase order must clearly list the **quantity of each part**, the complete and correct **part number**, and the basic **name of the part**.
4. The manufacturer reserves the right to substitute parts where applicable.
5. Some parts may be unlisted items which are special production items not normally stocked and are subject to special handling. Request a quotation for such parts before sending a purchase order.
6. The manufacturer reserves the right to change prices without prior notice.

NOTE: When ordering replacement decals, refer to the part numbers and descriptions listed in the safety section in the front of this manual.

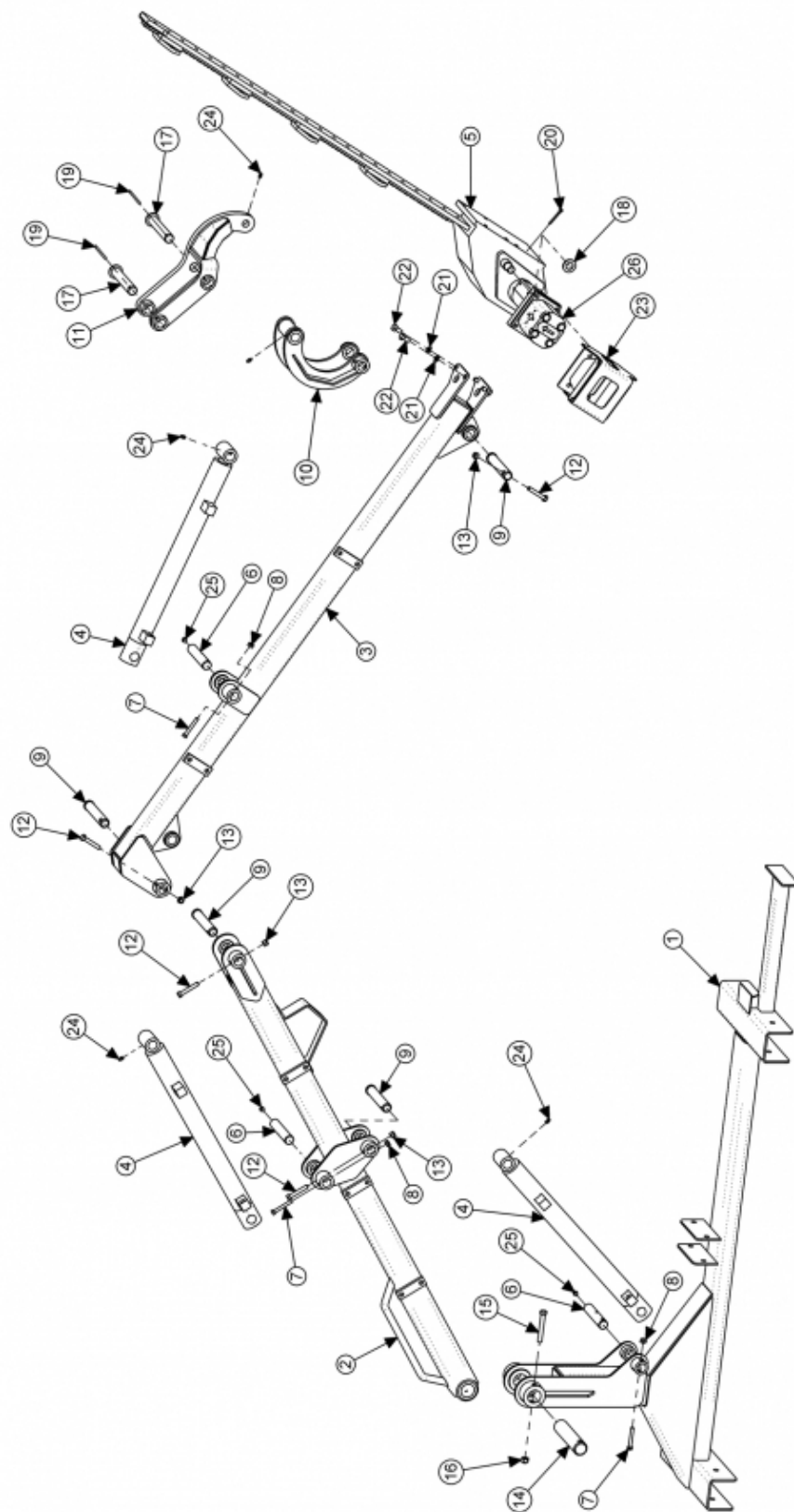


For maximum safety and to guarantee optimum product reliability, always use genuine **Tiger** replacement parts. The use of inferior replacement parts may cause premature or catastrophic failure which could result in serious injury or death.

Direct any questions regarding parts to:

Tiger Corporation
3301 N. Louise Ave.
Sioux Falls, SD 57107
1-800-843-6849
1-605-336-7900

WEEDOO MAIN ASSEMBLY

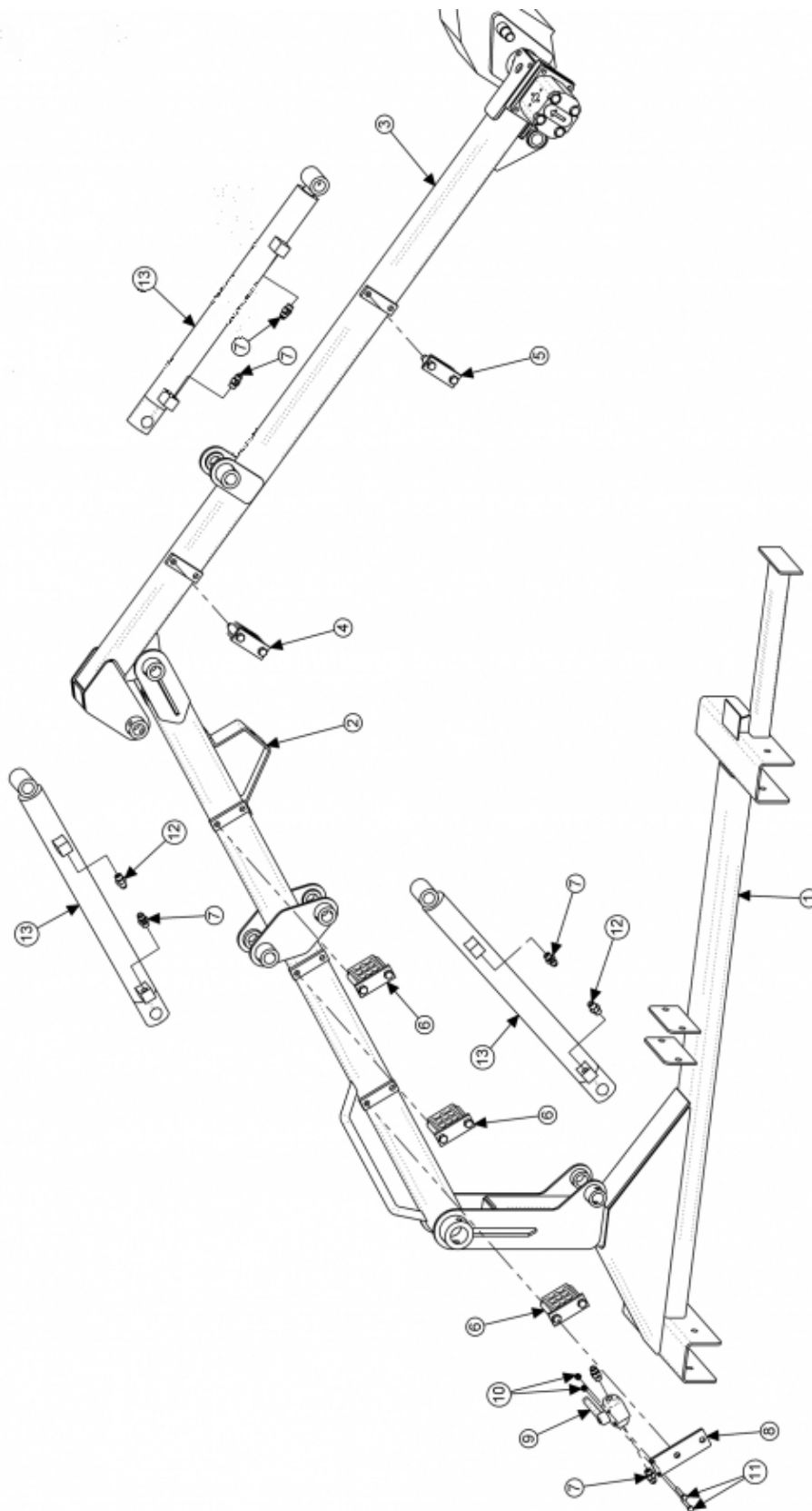


WEEDOO MAIN ASSEMBLY

Continued...

ITEM	PART NO.	QTY.	DESCRIPTION
1	06310217	1	MOUNT, BOOM
2	06310121	1	BOOM, MAIN, WEEDOO
3	06310219	1	BOOM, SEC, WEEDOO
4	06770046	3	CYL, WEEDOO, TAPPED
5	06520430	1	SICKLE BAR, ESM, WEEDOO
6	52107-4	3	PIN YDP, 1.00" X 5.25"
7	21585	3	CAPSCREW, 5/16" X 2-1/4" NC
8	21577	3	HEX NUT, NYLOCK, 5/16" NC
9	33503	4	PIN, 1" X 5.75" WHOLE
10	06310124	1	LINKAGE, 2, WEEDOO
11	06310123	1	LINKAGE, 1, WEEDOO
12	21635	4	CAPSCREW, 3/8" X 2-1/4" NC
13	21627	4	NYLOCK NUT, 3/8" NC
14	40332	1	PIN SHAFT
15	21688	1	CAPSCREW, 7/16" X 3-1/4" NC
16	21677	1	NYLOCK NUT, 7/16" NC
17	06360002	2	PIN, 1.00 X 5.87, W 25HOLE, CAP
18	33880	1	FLATWASHER, 3/4" GR8, SAE
19	06537021	2	ROLL PIN, 5MM X 50MM
20	22533	1	COTTER PIN, 3/16" X 2"
21	32724	4	FLATWASHER, 10MM
22	33534	4	CAPSCREW, 10MM X 20MM
23	06370161	1	GUARD, MOTOR, WEEDOO
24	6T3207	8	GREASE ZERK, 1/4"
25	6T3211	3	GREASE ZERK, 1/8" X STR
26	06520432	1	MOTOR, ESM, 22.5CCM, WEEDOO

WEEDOO HYDRAULIC ASSEMBLY



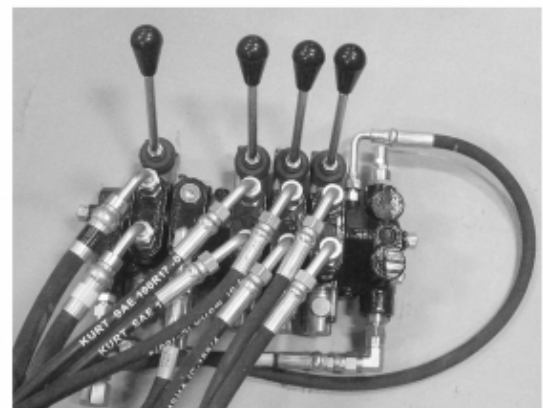
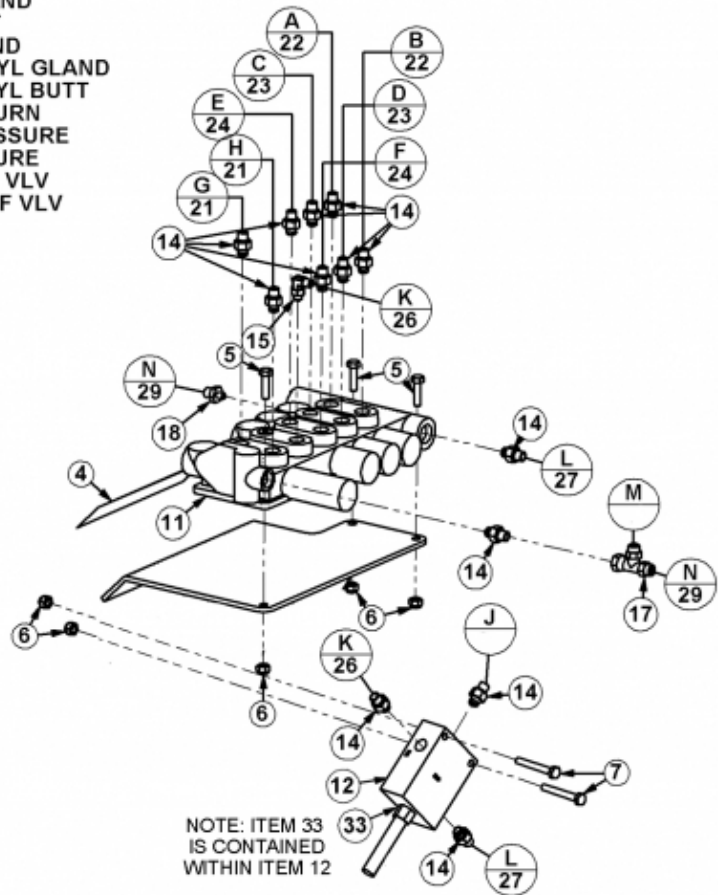
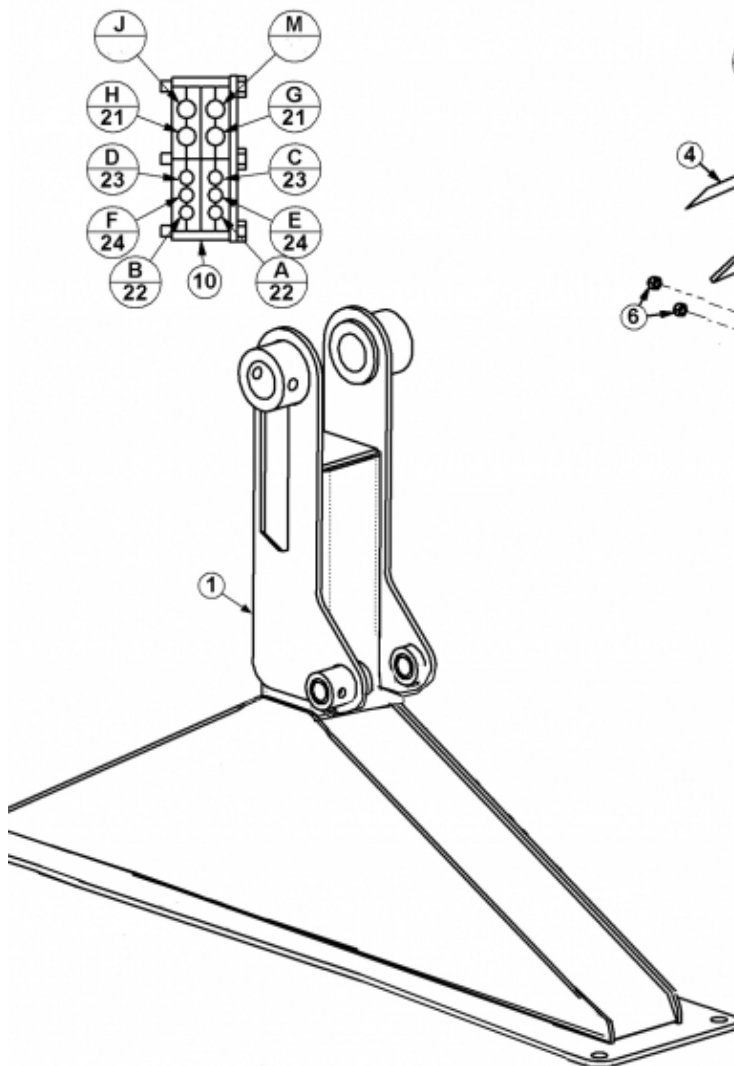
WEEDOO HYDRAULIC ASSEMBLY

Continued...

ITEM	PART NO.	QTY.	DESCRIPTION
1	06310217	1	MOUNT, BOOM
2	06310121	1	BOOM, MAIN, WEEDOO
3	06310219	1	BOOM, SEC, WEEDOO
4	06505120	1	CLAMP KIT, HOSE, .63X2, 5X3, 2PST
5	06505119	1	CLAMP KIT, HOSE, .63.2, 1PST
6	06505117	3	CLAMP KIT, HOSE, .63X2, 5X6, 2PST
7	32901	6	ADAPTER, 3/8"MOR X 3/8"MJ
8	06403242	1	BALL VALVE, MOUNT
9	06503209	1	BALL VALVE, 3/8" X 3/8" NC
10	21527	2	HEX NUT, NYLOCK, 1/4" NC
11	21534	2	CAPSCREW, 1/4" X 2" NC
12	06503146	2	ADAPTER, 3/8"MOR X 3/8"MJ, CHCK RES
13	06770046	3	CYL, WEEDOO, TAPPED

WEEDOO HYDRAULIC ROUTING

- A - SEC 1, A PORT OF VLV TO MAIN BOOM CYL BUTT
- B - SEC 1, B PORT OF VLV TO MAIN BOOM CYL GLAND
- C - SEC 2, A PORT OF VLV TO SEC BOOM CYL BUTT
- D - SEC 2, B PORT OF VLV TO SEC BOOM CYL GLAND
- E - SEC 3, A PORT OF VLV TO MOWER ROTATING CYL GLAND
- F - SEC 3, B PORT OF VLV TO MOWER ROTATING CYL BUTT
- G - SEC 4, A PORT OF VLV TO MOWER MOTOR RETURN
- H - SEC 4, B PORT OF VLV TO MOWER MOTOR PRESSURE
- J - #1 PORT OF FLOW CNTRL VLV TO PUMP PRESSURE
- K - #2 PORT OF FLOW CNTRL VLV TO MID INLET OF VLV
- L - #3 PORT OF FLOW CNTRL VLV TO MAIN INLET OF VLV
- M - RETURN TO HYDRAULIC FILTER ON TANK
- N - DRAIN PORT TO TEE ON TANK PORT
- P - SUCTION PORT OF TANK TO PUMP

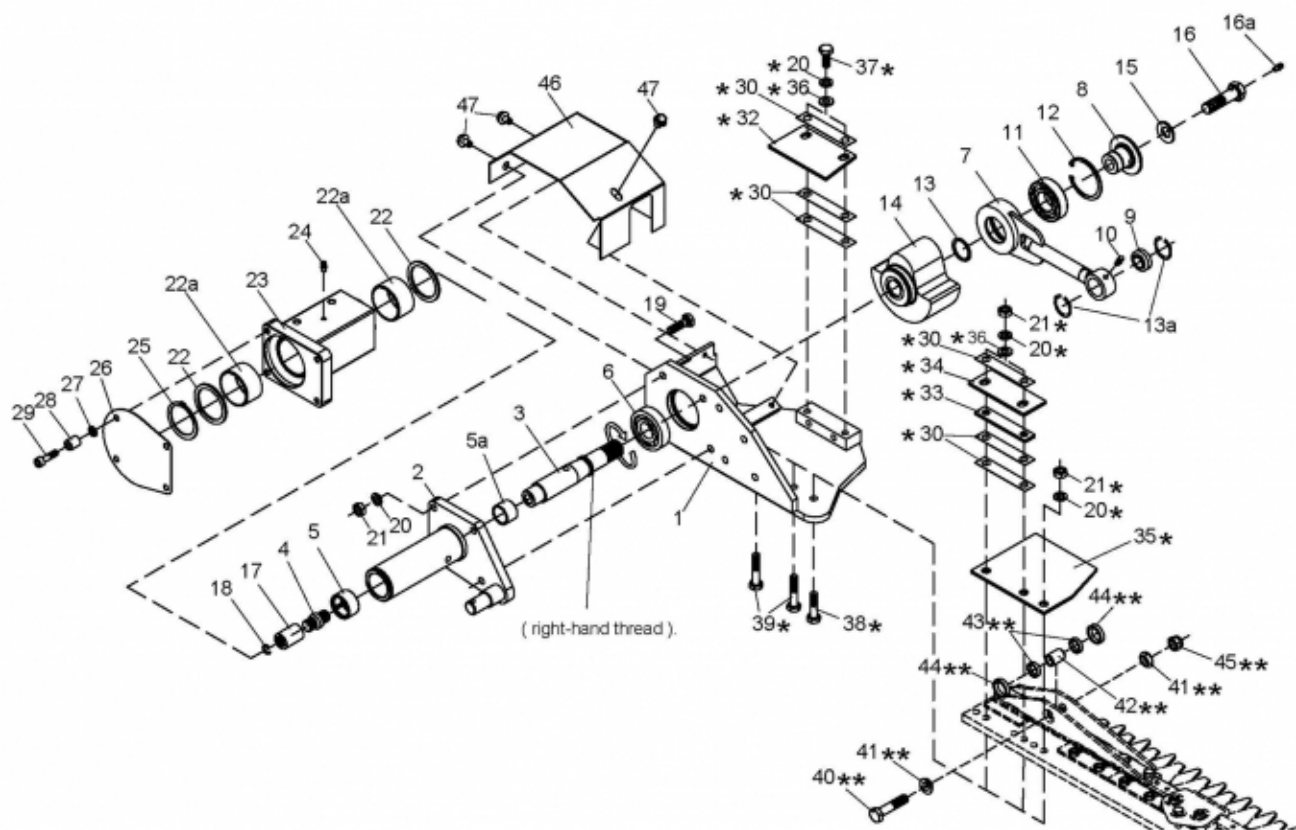


WEEDOO HYDRAULIC ROUTING

Continued...

ITEM	PART NO.	QTY.	DESCRIPTION
1	06310134	1	MOUNT, BOOM, WEEDOO
2	REF	1	KIT, ENGINE, WEEDOO
4	06550056	1	DECAL, CONTROL, WEEDOO
5	21530	3	CAPSCREW, 1/4" X 1" NC
6	21527	5	HEX NUT, NYLOCK, 1/4" NC
7	21534	2	CAPSCREW, 1/4" X 2" NC
8	21635	2	CAPSCREW, 3/8" X 2-1/4" NC
9	21627	2	NYLOCK NUT, 3/8" NC
11	06502118	1	VALVE, 4SP, BRAND, WEEDOO
12	06502119	1	FLOW CONTROL, WEEDOO
14	32901	12	ADAPTER, 3/8" MOR X 3/8" MJ
15	32902	1	ELBOW, 3/8" MOR X 3/8" MJ
17	06503048	1	RUN TEE, 3/8" MJ X 3/8" FJ X 3/8" MJ
18	06503145	1	ADAPTER, 3/16" MOR X 1/4" MJ
21	06500505	2	HOSE, 3/8" X 214"
22	33407	2	HOSE, 1/4" X 110"
23	06500678	2	HOSE, 1/4" X 150"
24	06500815	2	HOSE, 1/4" X 202"
26	33411	1	HOSE, 1/4" X 24"
27	06500434	1	HOSE, 1/4" X 18"
29	06500508	1	HOSE, 1/4" X 26"
30	06503201	1	ADAPTER, 1/2" MJ X 3/8" MB
31	34830	1	ADAPTER, 3/8" FJ X 1/2" MJ
32	06503097	2	CAP, #8, FJ
33	06502201	1	CARTRIDGE, 2, FLW CNTRL, WEEDOO

CUTTER DRIVE BREAKDOWN



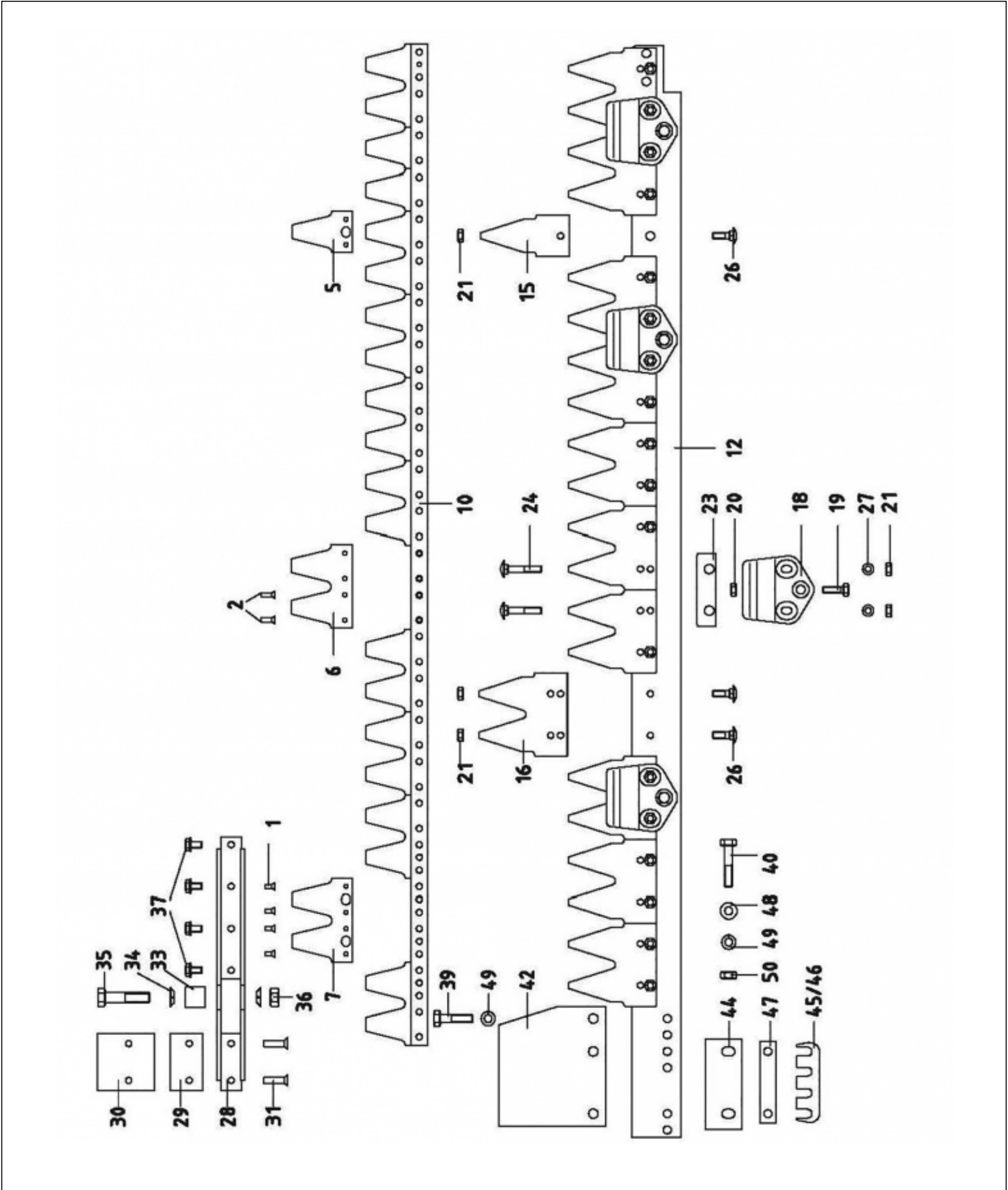
ITEM	PART NO.	QTY.	DESCRIPTION
1	273 0060	1	CARRIER
2	280 0740	1	ARTICULATION
3	300 5050	1	SHAFT (RH THREAD)
4	323 1150	1	COUPLER
5	590 1440	1	NEEDLE BUSHING
5A	590 2190	1	INNER RING
6	590 0520	1	GROOVET BALL BEARING
7	280 1090	1	CONNECTING ROD
8	324 2970	1	BUSHING
9	521 0070	1	SPHERICAL BEARING
10	557 0010	1	GREASE NIPPLE
11	590 0170	1	GROOVET BALL BEARING
12	566 0210	1	RETAINING RING
13	566 0920	1	RETAINING RING
13A	566 0310	1	RETAINING RING
14	337 0500	1	CRANK DISK
15	565 0580	1	LOCK WASHER
16	323 3060	1	HEXAGON HEAD BOLT W/ GREASE BORE

CUTTER DRIVE BREAKDOWN

Continued...

ITEM	PART NO.	QTY.	DESCRIPTION
16A	557 0030	1	GREASE NIPPLE
17	324 1650	1	CLUTCH BUSHING
18	566 0290	1	RETAINING RING
19	560 0650	1	HEXAGON BOLT
20	565 0120	1	LOCK WASHER
21	537 410	1	HEXAGON NUT
22	555 1250	1	SHIM RING
22A	502 0230	1	FRICTION BEARING
23+22A	285 0150	1	FLANGE COUPLING
24	557 0010	1	GREASE NIPPLE
25	566 0140	1	RETAINING RING
26	928 1100	1	CARTON COVER
27	565 0110	1	LOCK WASHER
28	339 1010	1	TUBE
29	561 0330	1	CYLINDER HEAD SCREW
30	363 1370	1	COMPENSATING PLATE 0.5MM
32	332 1210	1	GUIDE PLATE
33	363 1320	1	COMPENSATING PLATE 4MM
34	332 1220	1	GUIDE PLATE
35	321 2010	1	CUTTING PLATE
36	555 0200	1	WASHER
37	560 2630	1	HEXAGON BOLT
38	560 0610	1	HEXAGON BOLT
39	560 0600	1	HEXAGON BOLT
40	560 0910	1	HEXAGON BOLT
41	565 0200	1	SPRING LOCK WASHER - LINES
42	324 4600	1	SPACER BUSHING
43	324 4590	1	SPACER RING
44	367 2300	1	SEAL RING
45	537 0810	1	LOCK NUT
46	371 0980	1	SAFETY COVER
47	572 0780	1	HEXAGON BOLT W FLANGE

KNIFE ASSEMBLY



KNIFE ASSEMBLY

Continued...

ITEM	PART NO.	QTY.	DESCRIPTION
1	544 0111	1	CTSK RIVET 5X12
2	544 0151	1	CTSK RIVET 5X17
5	344 1331	1	KNIFE SECTION
6	344 1311	1	DOUBLE KNIFE SECTION
7	344 3121	1	DOUBLE KNIFE SECTION
10	355 1350	1	KNIFE BACK
12	304 0730	1	BAR BACK
15	321 0021	1	BAR SECTION
16	321 1061	1	DOUBLE BAR SECTION
18	267 0860	1	KNIFE HOLDER
19	560 2230	1	HEXAGON BOLT
20	537 0610	1	LOCK NUT
21	537 0420	1	HEXAGON NUT M8
23	332 0280	1	GUIDE PIECE
24	559 0130	1	ROUND HEAD SCREW M8X45
26	559 0030	1	ROUND HEAD SCREW M8X23
27	555 0810	1	CONICAL SPRING WASHER, 8
28	247 2580	1	KNIFE HEAD
29	332 1240	1	GUIDE PLATE
30	332 1230	1	GUIDE PLATE
31	544 0601	1	CTSK RIVET 8X25
33	324 0780	1	SPACER BUSH
34	565 0200	1	SPRING WASHER C12.5
35	560 0910	1	HEXAGON BOLT, M12X55
36	537 0810	1	LOCK NUT, NM 12
37	562 0410	1	SCREW W RIPP FLANGE M8X12
39	560 0610	1	HEXAGON BOLT, M10X40
40	560 0600	1	HEXAGON BOLT, M10X50
42	321 2010	1	CUTTING PLATE
44	332 1220	1	GUIDE PLATE REAR
45	363 1030	1	SHIM 0.2MM
46	363 1040	1	SHIM 0.5MM
47	363 1320	1	SHIM 3.0MM
48	555 0200	1	WASHER 10.5
49	565 0120	1	SPRING WASHER A 10
50	537 0410	1	HEXAGON NUT M10

NOTES

NOTES

WARRANTY SECTION

WARRANTY INFORMATION

Tiger Corporation, 3301 N. Louise, Sioux Falls, South Dakota, warrants to the original Retail Customer, the new Tiger equipment is free of defects in material and workmanship. Any part of equipment that in Tiger's judgement, show evidence of such defects will be repaired or replaced without charge, provided that the failure of part(s) shall have occurred within twelve (12) months from the date of delivery of said equipment to the Retail Customer. Expendable components such as knives, oil, chain sprockets, skid shoes, knife mounting disks and the like are excluded but not limited to this warranty.

The Retail Customer must pay the transportation cost to and from the Tiger Dealer's service shop for warranty service. Warranty service will be performed by the Tiger Dealer from whom the equipment was purchased, during service shop regularly scheduled days and hours of operation.

All Tiger obligation under this warranty shall be terminated if the equipment is modified or altered in ways not approved in writing by Tiger, if repair parts other than genuine Tiger repair parts have been used, or if the equipment has been subject to misuse, neglect, accident, improper maintenance or improper operation.

Tiger Corporation reserves the right to make improvements in design or changes in specification at any time without incurring any obligation to owners of equipment previously sold.

No agent or person has authority to alter, add to or waive the above warranties which are agreed to be in the only warranties, representations or promises, expressed or implied, as to the quality or performance of the products covered and which do not include any implied warranty of merchantability or fitness. In no event will Tiger be liable for incidental or consequential damages or injuries, including, but not limited to, loss of profits, rental or substitute equipment or other commercial loss.

THERE ARE NO WARRANTIES WHICH EXTEND BEYOND THOSE EXPRESSED HEREIN.

It is the Purchasers obligation to sign the warranty registration form **AFTER** he / she has Read and Understands the Operation and Safety Instructions stated within this manual.

ONE LAST WORD

This manual cannot possibly cover all of the potentially hazardous situations you will encounter. By being familiar with the safety rules, operating and maintenance instructions in this manual you can help prevent accidents. The objective of this manual is to help make you a better operator. Remember, **SAFETY IS YOU!**



1012

Your safety and the safety of those around you depends on **YOU**. Common sense should play a large role in the operation of this machine.

Since we at Tiger Corporation are constantly striving to improve our products, we reserve the right to change specifications or design at any time.

TO THE OWNER / OPERATOR / DEALER



To keep your implement running efficiently and safely, read your manual thoroughly and follow these directions and the Safety Messages in this manual and on the machine. The table of contents clearly identifies each section where you can easily find the information you need.

The Occupational Safety and Health Act (OSHA 1928.51 subpart C) makes the following minimum requirements for tractor operators.

OWNER REQUIREMENTS:

1. Provide a Roll-Over-Protective Structure that meets the requirements of this Standard; and
2. Provide Seatbelts that meet the requirements of this Standard and SAE J3C; and
3. Ensure that each employee uses such Seatbelt while the tractor is moving; and
4. Ensure that each employee tightens the Seatbelt sufficiently to confine the employee to the protected area provided by the ROPS.

OPERATOR REQUIREMENTS:

1. Securely fasten seatbelt if the tractor has a ROPS.
2. Where possible, avoid operating the tractor near steep ditches, embankments, and holes.
3. Reduce speed when turning, crossing slopes, and on rough, slick, or muddy surfaces.
4. Stay off slopes too steep for safe operation.
5. Watch where you are going – especially at row ends, on roads, and around trees.
6. Do Not permit others to ride.
7. Operate the tractor smoothly – no jerky turns, starts, or stops.
8. Hitch only to the draw-bar and hitch points recommended by the tractor manufacturer.
9. When the tractor is stopped, set brakes securely and use park lock, if available



Printed in USA
© Tiger Corporation