



Attachments



DURABILITY INNOVATION

COMMITMENT



Ditcher

The Boom Ditcher can be mounted to the Bengal or Saber Series Booms in a matter of minutes. The Tiger Ditcher is available as a separate, dedicated tool or can be ordered as an attachment to the inner or outer boom arms.



Standard cutter head is equipped with three heat treated, self sharpening, replaceable knives and wear plates.



With a 22" diameter cutting width, the Tiger Rotary Ditcher can move approximately 265 cubic yards of material per hour. The hydraulic deflector chute lets you place the spoils where you want them. Available in standard or reverse cutting heads.



WWW.TIGERMOWERS.COM



Claw

TIGER CLAW PAYS FOR ITSELF

Let the Tiger Claw help you reclaim lost material from being washed away with its patented* design. The disk gang action of the 22" boron steel disk blades provide the scraping and mulching action to pull and recover lost shoulder material from the ditch.

Whether you are working on a hard surface or a gravel road, the Tiger Claw can quickly repair and contour miles of road shoulder in a day. Calculate your savings with the formula listed below, and see how the Tiger Claw quickly pays for itself.

The Claw attaches to the tractors category II three-point hitch system. A single set of hydraulic remotes on the tractor are needed for positioning the tilt angle of the Claw in order to match the slope of the road shoulder.

Built for years of service, a heavy-duty steel frame holds the Claw's disk gang incline. Twelve disks are spaced evenly along the 2.25" diameter steel shaft and secured with two 2.25" - 4 bolt pillow block bearings designed to handle the end thrust pressure.

*U.S. PATENT NO'S 5,108,227 & Re. 34,860 CDN PATENT NO. 2,029,695



Patented angle design effectively moves and mulches 37" of material.



TRANSPORTING

For transport, Claw hydraulically folds to rear of tractor and is secured with a transport lock.



TOPLINK

Hydraulic toplink positions the working angle of the Claw.



HYDRAULIC POSITIONING

Allows the operator to easily move the disk gang out of the way of approaching obstacles.



UNIVERSAL CLAW (Option)

Designed for working on Left hand and Right hand road shoulders.

Calculate your CLAW return on investment with the following formula.

depth	x	width	x	constant	=	cubic/yards/mile	x	cost/yard	=	value of gravel/mile reclaimed
example 1"	x	37"	x	1.3555	=	50.154	x	\$30.00	=	\$1,505.00
_____	x	_____	x	1.3555	=	_____	x	_____	=	_____

Approximate weight - 1700 lbs



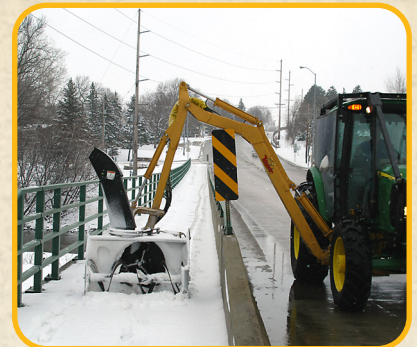
WWW.TIGERMOWERS.COM



Snow Panther

Convert your Tiger Boom Mower into a versatile and powerful snow blowing machine with the Snow Panther. This innovative product allows the operator the ability to clear snow from hard to reach areas that ordinary snow blowers can not.

When attached to the end of your Tiger boom, the Snow Panther provides the ability to remove large snow piles from guardrails, roadsides, sidewalks and fire hydrants quick and easily.



Tiger's Snow Panther can also be mounted to the TruckKat, changing a very mobile boom mowing machine into a snow blower in a matter of minutes. Make the most out of your truck or tractor with the full line of Tiger attachments designed for your year round needs. Call your Tiger dealer today.

Boom Sweeper



Tiger's Boom Sweeper head easily attaches to the secondary boom arm of any Tiger head turning your tractor into a versatile sweeping machine. Sweeper head is 60" wide and brush is constructed of 50% Poly and 50% steel. Sweeper attachment includes mount brackets, bonnet, broom and hoses.



WWW.TIGERMOWERS.COM

Sweeper and Snow Plow

Sweeper and Snowplow

The Tiger Sweeper / Snow Plow comes as a complete interchangeable system. Utilizing Tiger's push frame mounted to the front of the tractor, you can now change from sweeper to snow plow in minutes and use the same mounting system for each. Get those tough jobs done in a hurry with these handy attachments.

Available Tractor Models:

John Deere 6000E & 6000M

New Holland TS6110 & 120, T6145, T6155

Contact Tiger TM for tractor adaptability questions



Sweeper

- Dual Motors
- 8 feet wide
- 30° angle left and right
- 32" brush diameter
- Controlled by tractor remotes

Snow Plow

- Moldboard constructed from 10 mm steel
- 6 - 3/8" thick plasma cut steel ribs
- 30° angle left and right
- 11' wide snow plow
- AASHTO 1/2" thick cutting edges
- Controlled by tractor remotes

Set up your tractor for more options with the Tiger heavy duty push frame. Built from 3" x 4" steel, our push frame gives you the performance and power to take on the toughest jobs.

For additional features and specifications, please contact your Tiger Dealer.



Front Snow Plow



Front Sweeper



Plug & Play
Bulkhead for quick
disconnect



Boom Sweeper



Side Patrol Wing



WWW.TIGERMOWERS.COM



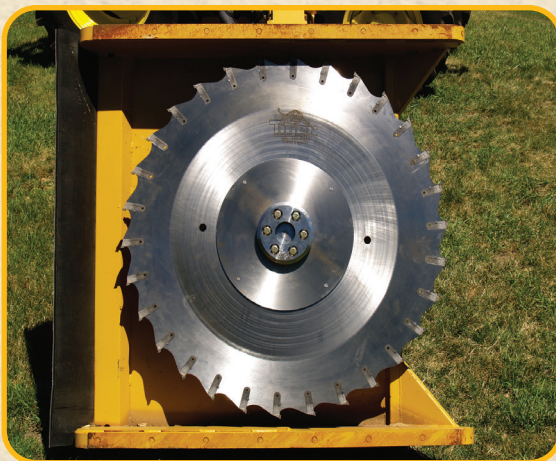
Growler Mulching Head



The “Growler” mulching head is an amazing boom attachment designed to grind trees up to 10” in diameter as well as heavy brush from roadways. The Growler can clear trees and brush in a single pass with virtually no cleanup. Once the trees are down, the only thing left is small chips that are completely biodegradable. No need to haul anything away. The Growler is designed to attach to all existing Tiger Bengal boom mowers and our 25 ft. Saber boom mowers. Take on those hard to reach and heavy jobs you only thought could be handled with a chain saw and several men. The Tiger Growler mulching head offers performance, strength, and reliability needed to get the job done!

Saw Blade

The Tiger 48” Saw Blade Attachment is designed and engineered to provide a smooth cut in tree limbs. This design makes a difference to our customers when aesthetics and thrown material are a concern. The Saw Blade can be mounted on both the Bengal and Saber Series 50” Rotary Cutters. The Saw Blade comes standard with replaceable carbide-tipped teeth.



48” Saw Blade Attachment with reinforced center for added blade strength. Tiger Bengal 50” Rotary deck pictured here.



Cut up to 6” tree limbs with Bengal Series
Cut up to 8” tree limbs with Saber Series





WetCut



Spray Chamber attaches to Boom Flail Cutter Head.



Offset Sprayer can reach weeds up to 14 feet from the right of the mower deck.



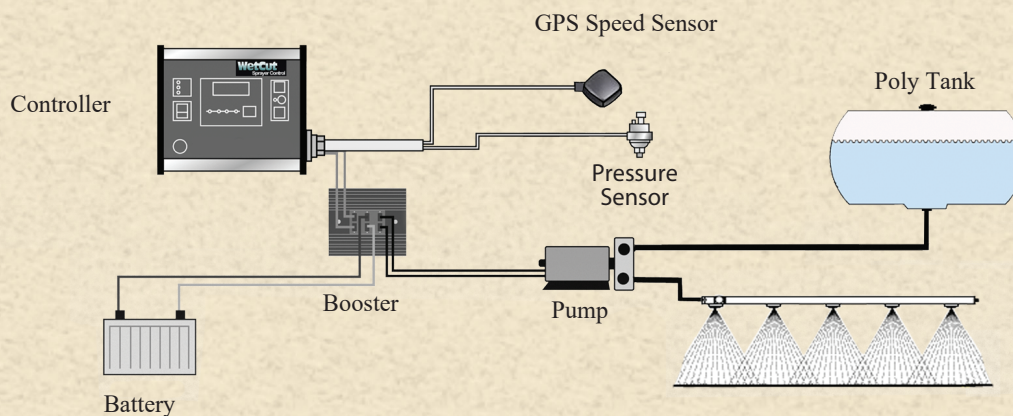
Spray Chamber can also attach to boom Rotary cutter head.



50, 100 & 150 gallon Tank mix systems are available for the tractor 3 PT hitch.

With a single flip of a switch, the WetCut Computer controlled system accurately applies the target rate. The digital display keeps the operator informed on the vehicle speed, system pressure and the GPA (gallons per acre) being applied.

WETCUT SYSTEM DIAGRAM

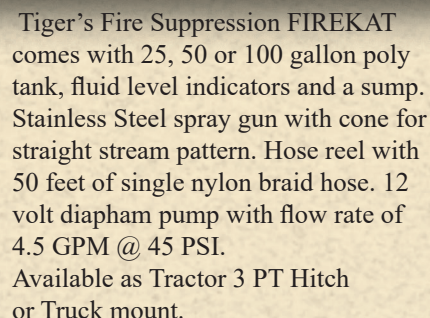


- Delivery system consists of a 12 volt positive displacement pump controlled by an automatic rate control system with a pressure sensor and GPS speed sensor.
- Available with three different poly tank sizes.
- Spray controller provides a digital read out of the application rate, system pressure and the vehicle miles per hour. Chemicals are applied through a fixed zone spray chamber.
- Ideal for applicators who want the precision of computerized rate control with the flip of a switch.
- Also available as an option is the Rheostat Control system.

LET TIGER'S PROVEN DESIGNS HELP YOU CONTROL COSTS BY PROVIDING BETTER AND MORE TIMELY CONTROL OF UNDESIRABLE VEGETATION.



WWW.TIGERMOWERS.COM



Genuine Tiger OEM Parts



Since 1968, Tiger has engineered and manufactured Tiger products that meet all ASTM safety guidelines. Contact your local Dealer today and ask about purchasing a Tiger mower or Tiger OEM parts. Our parts last longer, are more durable and designed and built to fit your Tiger mower perfectly.

Tiger Mowers reminds everyone that the use of genuine Tiger replacement parts will keep your Tiger equipment productive with the least amount of downtime. Tiger authorized Dealers are the only locations to purchase genuine Tiger parts. Standard warranty is one year unless extended warranty is purchased prior to delivery, the warranty requires the use of genuine Tiger parts or the warranty may be void.



Tiger Mowers LLC
3301 N Louise Ave.
Sioux Falls, SD 57107
800-843-6849
www.tigermowers.com
An Alamo Group Company



Specifications are subject to change without notice. Meets all applicable ANSI/SAE J1001 Test Standards. Optional equipment may be shown. One Year Warranty on all products.

© 2022 Tiger Mowers LLC. All Rights Reserved. Printed in the USA.



MADE WITH PRIDE IN THE USA

Dealer Info: