



# Attachments



DURABILITY INNOVATION

COMMITMENT





# Ditcher

The Boom Ditcher can be mounted in a matter of minutes to the Bengal or Saber Series Booms. The Tiger Ditcher is available as a dedicated tool or can be ordered as an attachment to the inner or outer boom arms.



Standard cutter head is equipped with three heat treated, self sharpening, replaceable knives and wear plates.



With a 22" diameter cutting width, the TIGER ROTARY DITCHER can move approximately 265 cubic yards of material per hour. The hydraulic deflector chute lets you place the spoils where you want them. Available in standard or reverse cutting heads.



[WWW.TIGERMOWERS.COM](http://WWW.TIGERMOWERS.COM)





# claw

## TIGER CLAW PAYS FOR ITSELF

Let the Tiger CLAW help you reclaim lost material from being washed away with its patented\* design. The disk gang action of the 22" boron steel disk blades provide the scraping and mulching action to pull and recover lost shoulder material from the ditch.

Whether you are working on a hard surface or a gravel road, the Tiger CLAW can quickly repair and contour miles of road shoulder in a day. Calculate your savings with the formula listed below, and see how the Tiger CLAW quickly pays for itself.

The CLAW attaches to the tractors category II three-point hitch system. A single set of hydraulic remotes on the tractor are needed for positioning the tilt angle of the CLAW in order to match the slope of the road shoulder.

Built for years of service, a heavy-duty steel frame holds the CLAW's disk gang incline. Twelve disks are spaced evenly along the 2.25" diameter steel shaft and secured with two 2.25" - 4 bolt pillow block bearings designed to handle the end thrust pressure.

\*U.S. PATENT NO'S 5,108,227 & Re. 34,860 CDN PATENT NO. 2,029,695



Patented angle design effectively moves and mulches 37" of material.



### TRANSPORTING

For transport, CLAW manually folds to rear of tractor and is secured with a transport lock.



### TOPLINK

Hydraulic toplink positions the working angle of the Claw.



### UNIVERSAL CLAW (Option)

Designed for working on Left hand and Right hand road shoulders.



### HYDRAULIC TRANSPORT (Option)

Allows the operator to easily move the disk gang out of the way of approaching obstacles. (Dual SCV's required.)

## Calculate your CLAW return on investment with the following formula.

depth	x	width	x	constant	=	cubic/yards/mile x	cost/yard	=	value of gravel/mile reclaimed
example 1"	x	37"	x	1.3555	=	50.154	x	\$13.00	= \$652.00
_____	x	_____	x	1.3555	=	_____	x	_____	= _____

Approximate weight - 1700 lbs



WWW.TIGERMOWERS.COM

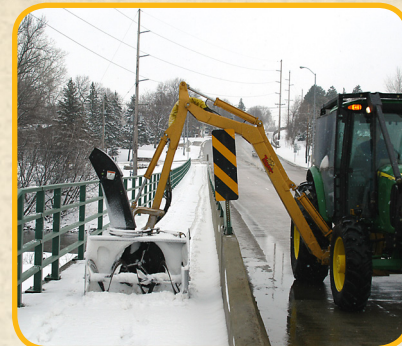




# Snow Panther

Convert your Tiger Boom Mower into a versatile and powerful snow blowing machine with the Snow Panther. This innovative product allows the operator the ability to clear snow from hard to reach areas that ordinary snow blowers can not.

When attached to the end of your Tiger boom, the Snow Panther provides the ability to remove large snow piles from guardrails, roadsides, sidewalks and fire hydrants quick and easily.



Tiger's Snow Panther can also be mounted to the TrucKat, changing a very mobile boom mowing machine into to a snow blower in a matter of minutes. Make the most out of your truck or tractor with the full line of Tiger attachments designed for your year round needs. Call your Tiger dealer today.

## FireKat



Tiger's Fire Suppression FIREKAT comes with 25, 50 or 100 gallon poly tank, fluid level indicators and a sump. Stainless Steel spray gun with cone for straight stream pattern. Hose reel with 50 feet of single nylon braid hose. 12 volt diaphragm pump with flow rate of 4.5 GPM @ 45 PSI. Available as Tractor 3 PT Hitch or Truck mount.



[WWW.TIGERMOWERS.COM](http://WWW.TIGERMOWERS.COM)



# **Tiger**<sup>TM</sup> **Sweeper and Snow Plow**

## Sweeper and Snowplow

The Tiger Sweeper / Snow Plow comes as a complete interchangeable system. Utilizing Tiger's push frame mounted to the front of the tractor, you can now change from sweeper to snow plow in minutes and use the same mounting system for each. Get those tough jobs done in a hurry with these handy attachments.

Available Tractor Models:

John Deere 5000E, 5000M, 6000E & 6000M  
New Holland TS6110 & 120, T6145, T6155

Contact Tiger TM for tractor adaptability questions



## Sweeper

- Dual Motors
- 8 feet wide
- 30° angle left and right
- 32" brush diameter
- Controlled by tractor remotes

## Snow Plow

- Moldboard constructed from 10 mm steel
- 6 - 3/8" thick plasma cut steel ribs
- 30° angle left and right
- 11' wide snow plow
- AASHTO 1/2" thick cutting edges
- Controlled by tractor remotes

Set up your tractor for more options with the Tiger heavy duty push frame. Built from 3" x 4" steel, our push frame gives you the performance and power to take on the toughest jobs.

For additional features and specifications, please contact your Tiger Dealer.



Front Snow Plow



Front Sweeper



Plug & Play  
Bulkhead for quick  
disconnect



Boom Sweeper



Side Patrol Wing



[WWW.TIGERMOWERS.COM](http://WWW.TIGERMOWERS.COM)





## Boom Auger



The Tiger Boom Auger attachment mounts to the end of any Tiger boom converting it into a heavy duty digging machine.

Built as one of the toughest augers available for engaging dirt, clay or light rock digging, our boom auger is designed to reach out and over obstacles most machines can't get to.

### FEATURES

- Standard length 51"
- Diameter available - 12" & 18"
- Standard flight thickness - 5/16"
- Semi-Double flight
- Bolt-on rock head available as option

## Saw Blade

The Tiger 48" Saw Blade Attachment is designed and engineered to provide a smooth cut in trees limbs. This design makes a difference to our customers when aesthetics and thrown material are a concern. The Saw Blade can be mounted on both the Bengal and Saber Series 50" Rotary Cutters. The Saw Blade comes standard with replaceable carbide tipped teeth.



48" Saw Blade Attachment with reinforced center for added blade strength. Tiger Bengal 50" Rotary deck pictured here.



Cut up to 6" tree limbs with Bengal Series  
Cut up to 8" tree limbs with Saber Series



[WWW.TIGERMOWERS.COM](http://WWW.TIGERMOWERS.COM)



# **Tiger**™ Tree Shear



Tiger's Tree Shear is built tough to handle heavy brush, limbs and even trees up to 12" in diameter. This handy boom attachment makes quick work of large, time-consuming jobs.

The Tree Shear gives the operator the ability to reach out and cut large branches while sitting safely inside the cab of the tractor, no need to be on the ground while cutting is being done.

Tree Shears can be attached to the secondary boom of any Tiger Boom. Tiger's Bengal boom series is available in 18' to 24' sizes, and Saber series in lengths of 25', 28' and 30'.

## Wetcut



Spray Chamber attaches to Boom Flail Cutter Head.



Front mount tank for side flail wetcut system.

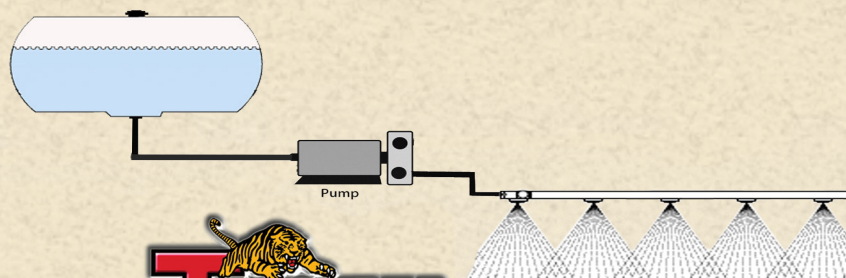


Spray Chamber can also attach to boom Rotary cutter head.



50, 100 & 150 gallon Tank mix systems are available for the tractor 3 point hitch.

The Tiger Wetcut mower attachment is the perfect answer to complete roadside vegetation control. The Tiger Wetcut system gives you the ability to apply selective brush control when the time is right and maximize your control over tough vegetation early on while you are mowing. Wetcut can be added to any Tiger cutter head. Your spray coverage equals width of cut.



[WWW.TIGERMOWERS.COM](http://WWW.TIGERMOWERS.COM)





# Turbine Blower



Tiger's boom mount Turbine Blower is powerful, versatile and proven to take care of debris quickly. Designed to connect to the end of any Tiger boom mower, this attachment is easy to operate and will provide years of dependable service.



## Genuine Tiger OEM Parts



Since 1968, Tiger has engineered and manufactured Tiger products that meet all ASTM safety guidelines. Contact your local Dealer today and ask about purchasing a Tiger mower or Tiger OEM parts. Our parts last longer, are more durable and designed and built to fit your Tiger mower perfectly.

Tiger Corporation reminds everyone that the use of genuine Tiger replacement parts will keep your Tiger equipment productive with the least amount of downtime. Tiger authorized Dealers are the only locations to purchase genuine Tiger parts. Standard warranty is one year unless extended warranty is purchased prior to delivery, the warranty requires the use of genuine Tiger parts or the warranty may be void.



Tiger Corporation  
3301 N Louise Ave.  
Sioux Falls, SD 57107  
800-843-6849  
[www.tigermowers.com](http://www.tigermowers.com)  
An Alamo Group Company



Dealer Info:

Specifications are subject to change without notice. Meets all applicable ANSI/SAE J1001 Test Standards. Optional equipment may be shown. One Year Warranty on all products.

© 2018 Tiger Corporation. All Rights Reserved. Printed in the USA.